

**ISA**  
TanTec



# ISA WORKS





These Hard Working leathers from ISA are designed for use in the toughest industries. Construction, Agriculture, Military, Duty, Fire Fighting, to name a few.

**ISAWORKS**

	Features							
	Resistance to chemicals Barnyard / Construction			TFL Cool	FR	EN Safety Footwear	Washable	Gore Tex
Test method	ISA014-2016-A0			TFLCool - 001	NFPA-1977	ISO20345:2011	ISO-105-C06	ISO14268-option C WICKING
Brief explanation	Samples of leather are exposed for 5 days to selected chemicals found in harsh environments and the effects on the leather grain and finish are assessed after repeated flexing			Measure with spectrometer the reflectance spectrum of leather samples at a specific wavelength (900nm)	Samples of leather are exposed to specific fire source for defined time. Any combustion of the leather is assessed.	Water vapor permeability, water vapor absorption, pH value, tear strength, water penetration (only for WP leather) and chromium VI content are determined.	Samples of leather are stitched with multifiber and contained in stainless steel bottles with specific steel balls and detergents. After 40mins rotation in water bathing, the color staining of multifiber are assessed.	One piece of leather sample is used to seal a bottle which is filled with dried silica gel. Wind is blown to the leather for certain hours. The weight gained by the whole bottle is assessed to evaluate the permeability of the sample.
Detail	SPR Urine	SPR Oleic acid	Saturated Lime	Reduce Infra Red Heat	Fire resistance	WVP, WVA, pH, Tear Strength, WP, Cr VI	Color staining	Water vapor permeability WICKING
1 Bull Pen	√	√			√		√	
2 Connection WP	√	√			√	√		
3 Industrial Bear	√	√	√		√	√		
4 Industrial Full Grain	√	√			√	√		
5 Industrial Greasy	√	√			√	√		
6 Industrial Grizzly	√	√	√		√	√		
7 Muddy River WP	√	√			√	√		
8 Onida	√	√	√		√			
9 Overford WP	√	√			√	√		
10 Regiment WP	√	√			√	√		
11 Riptide Galloper WP - Black Only	√	√	√		√	√		
12 Sawyer	√	√			√	√		
13 TFL Cool WP - Black Only	√	√		√	√	√		√
14 Traction	√	√			√	√		
15 Volcano WP	√	√			√	√		
16 Workhorse WP	√	√	√		√	√		

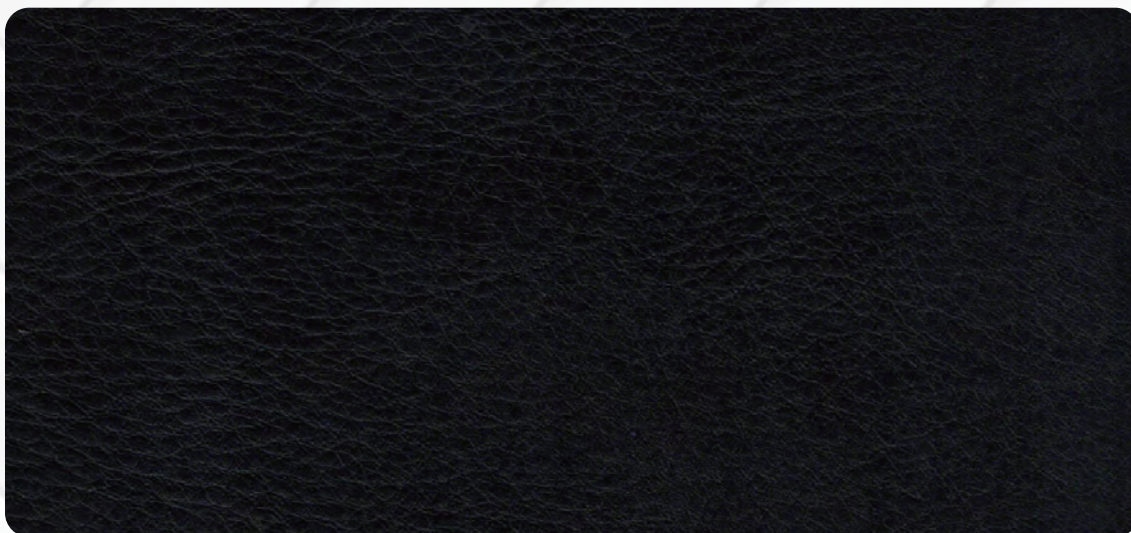
## Bull Pen

Weight Range Available:	1.2 - 1.8mm
Oil Content:	8 - 12%
Certified for:	Barnyard Resistance Fire Resistance Washable

## Big Ben



## Eiffel





Connection WP	
Weight Range Available:	1.2 - 2.2mm
Oil Content:	16 - 20%
Certified for:	Barnyard Resistance Fire Resistance EN Safety Footwear

Mink Oil



Alcatraz



## Industrial Bear

Weight Range Available:	1.4 - 2.2mm
Oil Content:	18 - 22%
Certified for:	Barnyard Resistance, Lime Resistance Fire Resistance, EN Safety Footwear

### Teak



### Eiffel



## Industrial Full Grain

Weight Range Available:	1.2 - 2.2mm
Oil Content:	8 - 12%
Certified for:	Barnyard Resistance Fire Resistance EN Safety Footwear

Black



Mink Oil



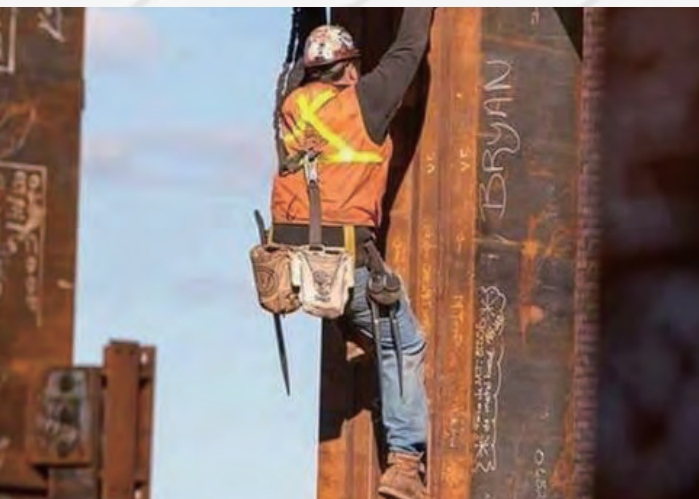
## Industrial Greasy

Weight Range Available:	1.2 - 2.2mm
Oil Content:	16 - 20%
Certified for:	Barnyard Resistance Fire Resistance EN Safety Footwear

Black



Big Ben





## Industrial Grizzly

Weight Range Available:	1.4 - 2.2mm
Oil Content:	16 - 20%
Certified for:	Barnyard Resistance, Lime Resistance Fire Resistance, EN Safety Footwear

Black



Infield





## Muddy River WP

Weight Range Available:	1.2 - 2.2mm
Oil Content:	14 - 18%
Certified for:	Barnyard Resistance Fire Resistance EN Safety Footwear

Summer Brown

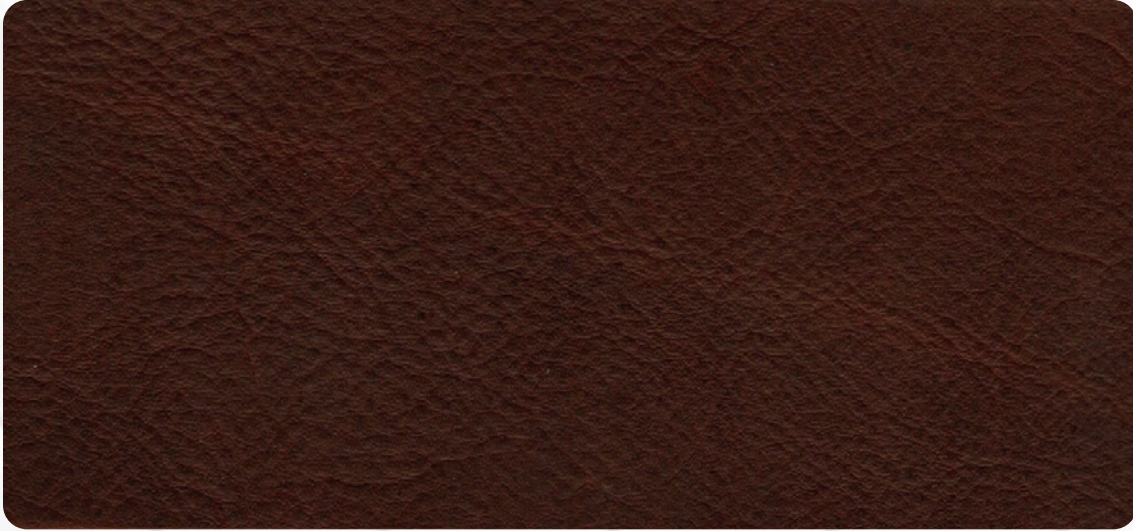


Black



Onida	
Weight Range Available:	1.4 - 2.2mm
Oil Content:	24 - 30%
Certified for:	Barnyard Resistance Lime Resistance Fire Resistance

## Grand Canyon



## Gibraltar





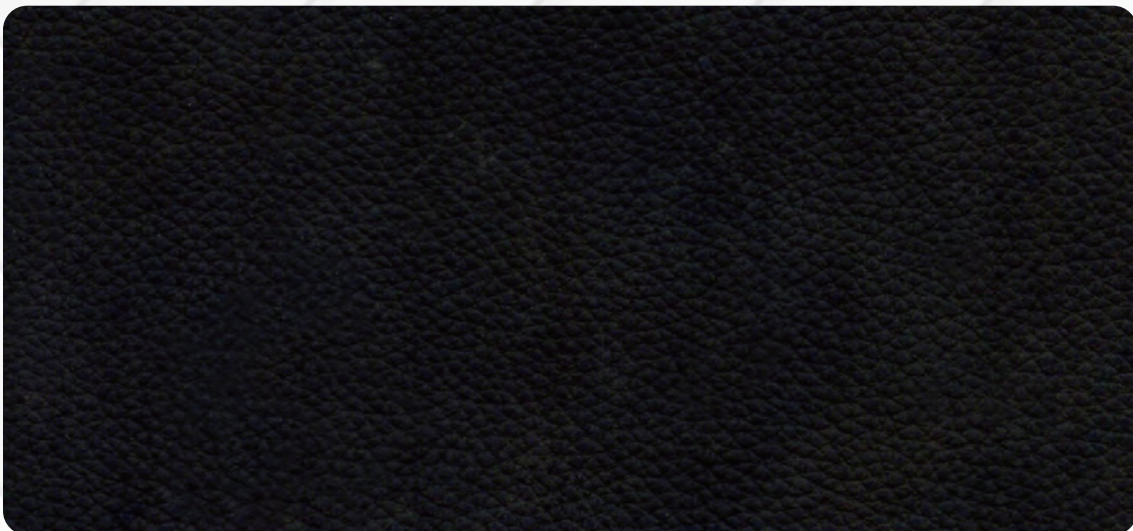
## Overlord WP

Weight Range Available:	1.2 - 1.8mm
Oil Content:	12 - 16%
Certified for:	Barnyard Resistance Fire Resistance EN Safety Footwear

Big Ben



Great Wall

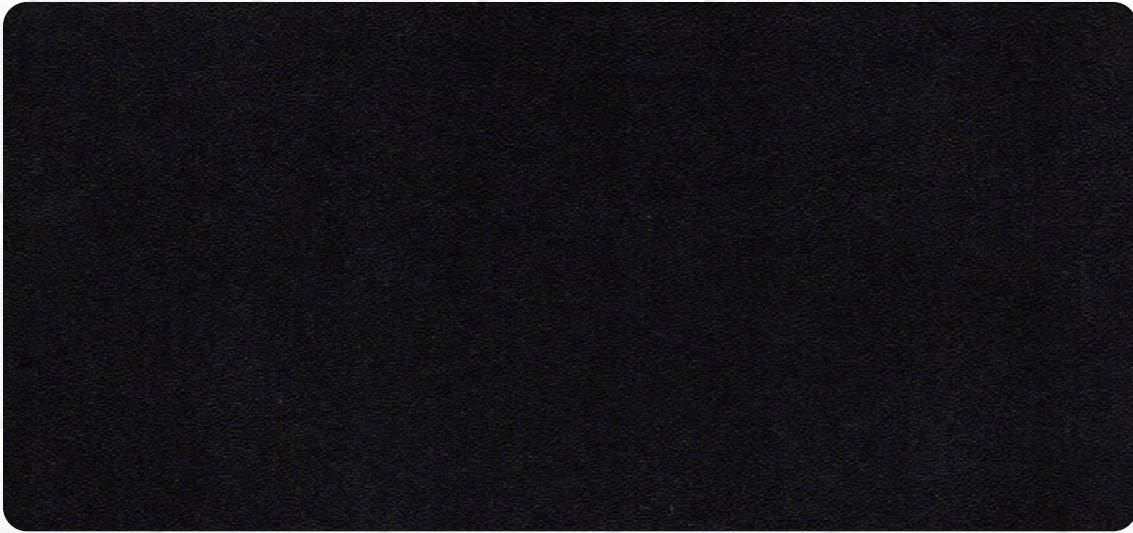




## Regiment WP

Weight Range Available:	1.2 - 2.2mm
Oil Content:	12 - 16%
Certified for:	Barnyard Resistance Fire Resistance EN Safety Footwear

Black



Alcatraz





## Riptide Galloper WP

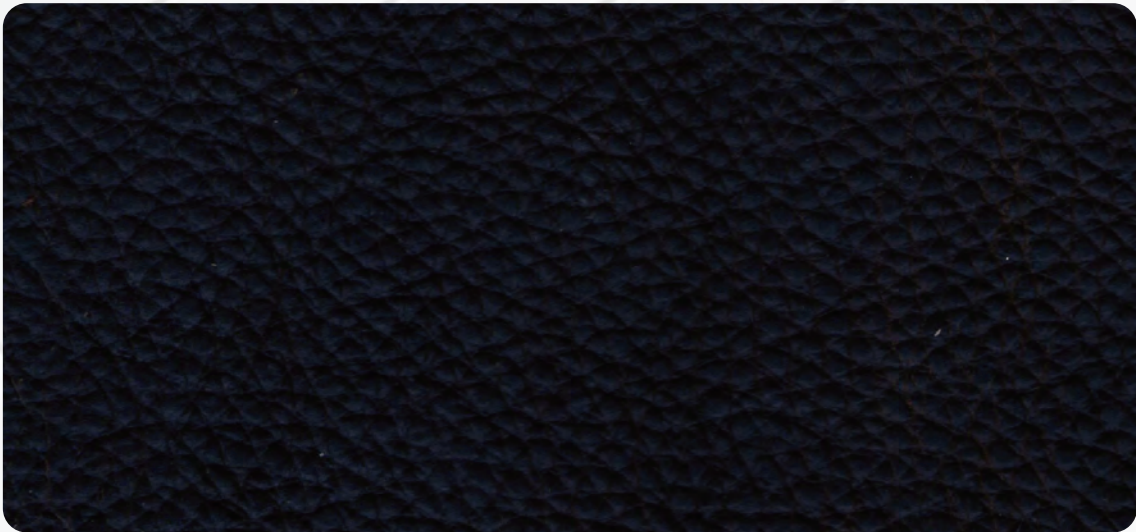
Weight Range Available:	1.2 - 2.2mm
Oil Content:	12 - 16%
Certified for: (Only for Black Color)	Barnyard Resistance, Lime Resistance Fire Resistance, EN Safety Footwear

Black



<b>Sawyer</b>	
Weight Range Available:	1.4 - 2.0mm
Oil Content:	16 - 20%
Certified for:	Barnyard Resistance Fire Resistance EN Safety Footwear

## Copper Kettle





## TFL Cool WP

Weight Range Available:	1.2 - 1.8mm
Oil Content:	8 - 12%
Certified for: (Only for Black Color)	Barnyard Resistance, TFL Cool, Gore Tex Fire Resistance, EN Safety Footwear

Black





## Traction

Weight Range Available:	1.2 - 2.0mm
Oil Content:	14 - 18%
Certified for:	Barnyard Resistance Fire Resistance EN Safety Footwear

### Great Wall



### Wedge





## Volcano WP

Weight Range Available:	1.4 - 2.0mm
Oil Content:	16 - 20%
Certified for:	Barnyard Resistance Fire Resistance EN Safety Footwear

Infield



Mink Oil





## Workhorse WP

Weight Range Available:	1.4 - 2.2mm
Oil Content:	14 - 18%
Certified for:	Barnyard Resistance, Lime Resistance Fire Resistance, EN Safety Footwear

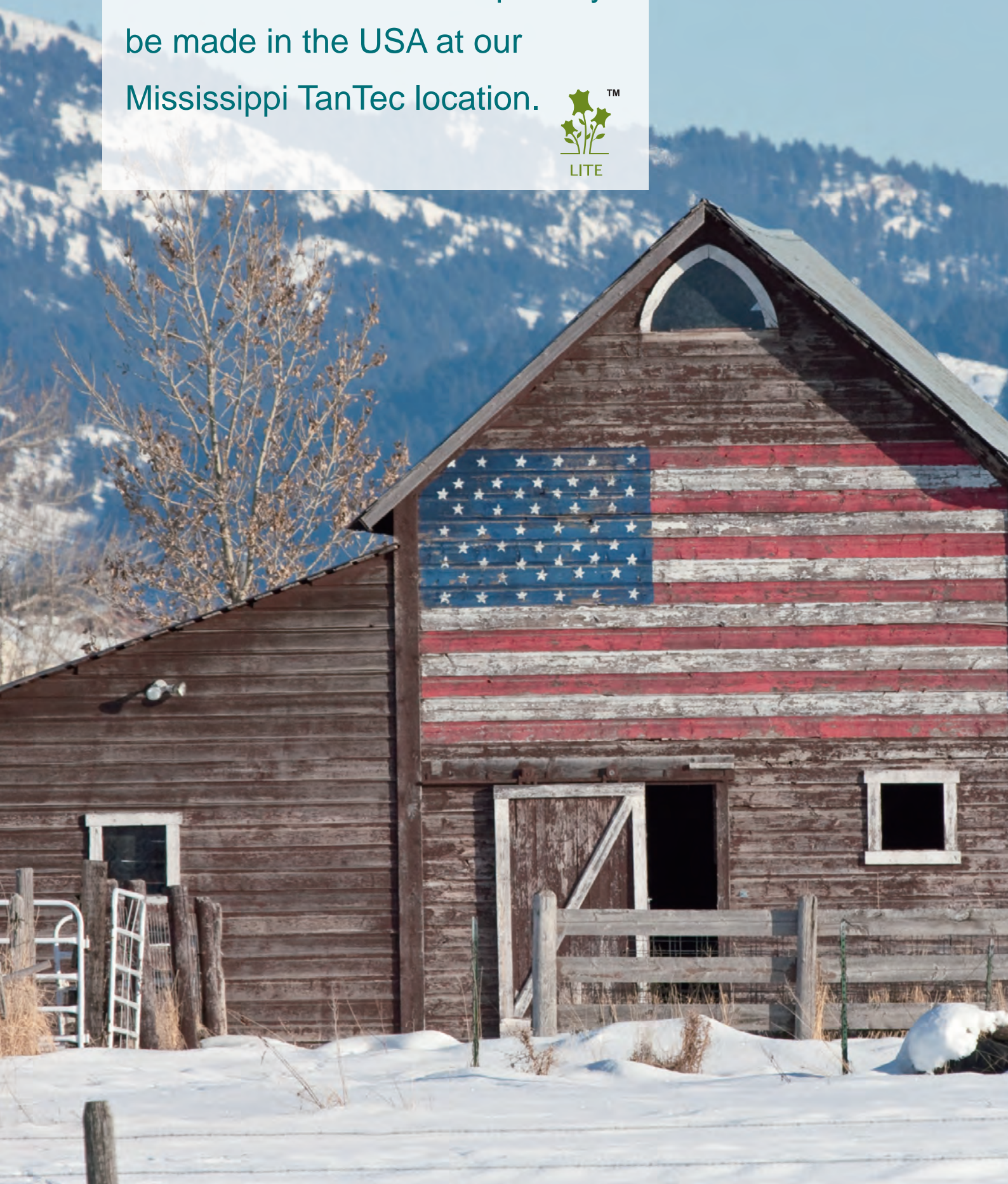
### Walnut



### Gibraltar



All of these leathers can proudly  
be made in the USA at our  
Mississippi TanTec location.



**ISA TanTec Ltd.**

Headquarters  
Avenida Da Praia Grande N. 619  
Comercial Si Toi 5 Andar 8, 999078, Macau, P. R. China  
Tel: +853 2835 6320

**Mississippi TanTec Leather, Inc.**

101 TanTec Way,  
Vicksburg, MS 39183, USA  
Tel: +1 601 429 6081

**Saigon TanTec Leather Ltd.**

Lot M2-M3, Viet Huong 2 Industrial Park,  
An Tay Village, Ben Cat District,  
Binh Duong Province, Vietnam  
Tel: +84 274 357 9101 / 357 9102

**TransAsia TanTec Ltd.**

Lot B6.1, C4 Street,  
Thanh Thanh Cong Industrial Park, An Hoi Quarter,  
An Hoa Ward, Trang Bang Town,  
Tay Ninh Province, 840000 Vietnam  
Tel: +84 276 388 3382

**Heshan TanTec Leather Co., Ltd.**

No. 1 Xingli Road,  
Hecheng Town, Heshan City,  
Guangdong Province, 529727, P. R. China  
Tel: +86 750 831 3280 / 831 3294

Send us an email to [info@tantec1.com](mailto:info@tantec1.com)  
for inquiries.

 **ISA nextgenmaterials**

ISA INDUSTRIAL LTD. [WWW.ISANEXTGENMATERIALS.COM](http://WWW.ISANEXTGENMATERIALS.COM)  
MACAU (CHINA) | USA | VIETNAM | CHINA | HONG KONG (CHINA)

