



escape.

---

Fall Winter 2022 collection

---

@Hakone, Japan

## ABOUT ISA SWATCHBOOK

Seasonal Swatchbooks are provided to our customers twice per year showcasing our meticulously developed leathers according to current trends. Cuttings and color stories are provided for each featured leather. As an LWG Gold Rated tannery, we also compare the water and energy consumption from our production processes for each tannage. This shows our customers the environmental savings which can be achieved from buying ISA tanned leathers.



The Brand < Behind The Brand

## Growing The Brand Behind The Brand

Consolidating suppliers is easy with ISA. Due to our recent acquisitions and expansions, we are now able to offer different leather footwear component needs: Shoe leather, genuine Italian leather, cut parts, leather trims, labels, and laces. All are made in our sustainable facilities!



AHEAD OF THE CURVE

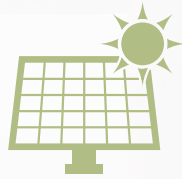
As a tannery, ISA TanTec is committed to conserve the environment and resources. Sustainability is an important part of ISA's identity. In 2003, ISA TanTec developed the **LITE** (Low Impact To the Environment) concept which defines a high standard of environmental sustainability in the manufacturing process.

### Lite Features



#### Bamboo Wall

Our bamboo walls not only provide comfortable, natural ventilation for our employees, but they also save energy by limiting the need for fans on the production floors.



#### Solar System

Our solar system is used to heat production water in the replacement of traditional heating sources such as diesel oil.



#### Rain Lagoon

Our lagoon collects 27,300 tons of rainwater per year that is used for both production and greenery.



#### Wind Energy

Rainwater is pumped from our lagoon into production by wind power. This saves 5,189 kwh and reduces 4,006 kg of CO2 emission per year.



#### Natural Light

Green Building technology has been adopted in our tannery to reduce energy consumption. We have opaque light panels in our ceilings, maximizing the use of natural light during the day.



#### Wetland



Our constructed wetlands system is set up with an automated control of water levels, allowing a natural purification process without generating emissions. It creates a biomass fuel and helps us in reducing our carbon footprint by 245kwh/year/sqm.

*Together We Save!*

## Environmental Impact



Compare the energy and water savings of ISA products when choosing leathers for adoption. The choice you make can positively influence the impact to the environment!

Article	HRS saved for lighting a 11W lamp 	US gallons of water saved 
Booster	301.70	8.38
Calm	320.83	8.84
Cashmere WP	298.30	8.12
Crocus	278.73	8.84
Discovery WP SS Washable	285.04	8.07
Molly	310.89	8.35
Overdrive WP	275.97	8.50
Plunge	314.56	7.98
Plush	319.47	8.66
Rejuvenate Washable	311.09	8.22
Revenge Soft	298.13	8.61
Rogue Metallic WP	262.72	8.50
Sanehorse WP LO	290.06	8.07
Smooth Warrior 85	273.65	7.84
Snowbird WP SS	267.70	8.07
Tailgate WP EN	283.14	7.59
Auburn Leather Laces	11.46	0.36

The numbers are showing the lighting hours and water an article will save to make one pair of shoes (2.5 sqft of leather) or one pair of laces (0.13 sqft of leather), comparing to the latest LWG Pass Score (50%) of 67.2 MJ/m2 for energy consumption and 178L/m2 for water consumption.

LWG (Leather Working Group), a multi-stakeholder group, develops and maintains a protocol that assesses the compliance and environmental performance of tanners, promotes and appreciates environmental business practices within the leather industry.



# ISA TANTEC'S WIDE-RANGING AUDITS



\* Examples of audits that have been completed for over 30 brands



## Saline Solution

A technical innovation for salt resistance suitable for every day wear in both summer and winter seasons.



## Spotless

“Spotless” stain resistant leather stands up to coffee, wine, ketchup and food oil with no visible color change.



## Machine Washable

A specially developed leather that can be machine washed for easy cleaning.



## V2O VulCAN

VulCAN leathers has lower oil content (Max.12%) allowing for sole adhesion during vulcanized shoe making.



## PFC Free Waterproof Leather

While ISA strives to produce premium waterproof and dirt repellent leather, all products are free from PFCs (PFC-Free).



## ISA Works

Leather designed for use in the toughest industries. Construction, Agriculture, Military, Duty, Fire Fighting, to name a few.



The Brand > Behind The Brand

## CONTACT US

Ronda de Bie, Senior Vice President of Sales  
ronda@tantec1.com • +86-138-2235-9856

Keith Hill, Vice President Business Development  
keith@tantec1.com • +86-186-8833-3390

Peter Peng, Director of Sales China & Vietnam  
peter.peng@tantec1.com • +86-138-0254-8822

Gordon Wemmitt, US Sales Director  
gordon@tantec1.com • +1-510-759-9873

Steffen Weih, European Sales Manager  
steffen@tantec1.com • +49-170-527-7700

Jothi (JP) Prakasam, Sales Director – India & Bangladesh  
jp@tantec1.com • +91-896-200-2706

Selina Yang, MTL CS & Sales Administration  
selina@tantec1.com • +1-601-529-1636

Emily Satterthwaite, Account Manager  
emily@tantec1.com • +1-616-633-0338

Shannon Brozyna, Account Manager  
shannon@tantec1.com • +1-207-570-8933

Matthew Feuer, US Sales - The Leather Group  
matt@tantec1.com • +1-203-505-2074

Bob Joyce, US Sales - The Leather Group  
bob@tantec1.com • +1-603-828-8581

Robert Hood, Canadian Sales - R.F. Hood Ltd.  
robert@rfhoodlimited.com • +1-416-293-6723

Tommy Tan, Asia Sales  
tommy.tan@tantec1.com • +86-137-9705-9313

David Ouyang, Asia Sales  
david-o@tantec1.com • +86-135-3902-5289

Bill Chen, Asia Sales  
bill@tantec1.com • +86-138-2239-0521

Seven Yang, Asia Sales  
seven@tantec1.com • +86-134-1300-0138

Tina Zhang, Asia Sales  
tina@tantec1.com • +86-134-1597-2030

Andy Yang, Asia Sales  
andy@tantec1.com • +84-931-532-552

Dan Zhao, Asia Sales  
dan@tantec1.com • +86-138-2802-1919

Poland Feng, Asia Sales  
Poland@tantec1.com • +86-135-0901-5119

Javan Feng, Asia Sales  
javan@tantec1.com • +86-134-2260-8568

Mark Zhang, Asia Sales  
mark@tantec1.com • +86-138-2720-1324

Duncan Xu, Asia Sales  
duncan@tantec1.com • +86-135-0900-6350

Franky Mou, Commercialization Supervisor  
franky@tantec1.com • +86-139-2629-5081

Lisa J. Howlett, Brand Ambassador, ISA Auburn Leather  
lisa.howlett@tantec1.com • +1-270-535-3416

Adam D. Simon, Director of Sales & Marketing, ISA Auburn Leather  
adam@tantec1.com • +1-404-991-0723

Janice Rigsby, Account Manager, ISA Auburn Leather  
janice@tantec1.com • +1-270-542-4116 x17

Arosia Yu, Director CS (US/CN/VN)  
arosia@tantec1.com • +86-138-2802-2722

Jany Phan, Vietnam CS  
jany@tantec1.com • +84-90-8061894

Gillian Tang, Director Marketing and Public Relations  
gillian@tantec1.com • +853-6263-0008

### ISA TanTec Ltd.

Headquarters  
Avenida Da Praia Grande N 619,  
Comercial Si Toi, 5 Andar 8, 999078, Macau  
Tel: + 853-2835-6320

### Mississippi TanTec Leather, Inc.

101 TanTec Way, Vicksburg, MS 39183, USA  
Tel: +1-601-429-6081

### Saigon TanTec Leather Ltd.

Lot M2-M3, Viet Huong 2 Industrial Park,  
An Tay Village, Ben Cat District,  
Binh Duong Province, Vietnam  
Tel: +84-274-357-9101 / 357-9102

### TransAsia TanTec Ltd.

Lot B6.1, C4, Thanh Thanh Cong IP,  
An Hoi Hamlet, An Hoa Ward, Trang Bang  
Town, Tay Ninh Province, 840000, Vietnam  
Tel: +84 276 388 3382

### Heshan TanTec Leather Co., Ltd.

No. 1 Xingli Road,  
Hecheng Town, Heshan City,  
Guangdong Province, 529727, China  
Tel: +86-750-831-3280 / 831-3294

### ISA DG Showroom

Shop 1146-1147, A. Shoes,  
World Footwear Headquarters Base,  
5 Hujing Avenue, Hou jie,  
Dongguan City, Guangdong Province,  
523000, China  
Tel: +86-750-831-3280 / 831-3294

## CONTACTS OF KENDA FARBEN

### China office

Giorgio Bonacasa  
General Manager China  
bonacasagiorgio@yahoo.it

Valentina  
Dongguan Office Manager  
vale@kendafarbenchina.com  
• +86-135-9017-6296

### Vietnam office

Mrs Lien  
Assistant Manager  
lien@kendafarbenvietnam.com  
• +84-916-506-839

Mr. Gu  
Technical Team Responsible  
gu@kendafarbenvietnam.com  
• +84-772-657-742

### USA office

Miller Bryant  
Brand Account Manager  
BryantKenda18@gmail.com  
• +1-919-417-4066



The Brand >< Behind The Brand



# escape.

## Fall Winter 2022 Collection

### ISA CORE Color Palette

In a time of extreme uncertainty, use our Core Color Palette as the foundation to build your color stories around. As consumers look for assurance, our neutrals are shades that evoke familiarity and inspire trust. **Demitasse** is a timeless shade for a fall season. **Leather Brown** is recognized as a staple in any leather palette. The consistency and richness of proven colors is a leading source for inspiration.

### ISA SEASONAL Color Palette

Our seasonal palette offers a selection of great pop colors to bring optimism and joy to your product. While consumers will round out their closet with Core and Neutral options, they will also want newness and fun. **Festival Fuchsia** continues as an eye-catching key color. **Sodalite Blue** emerges as an important blue shade as consumers look for easy colors to incorporate in their wardrobes. **Galapagos Green** captures the outdoor spirit found on a remote island destination while **Grape Wine**'s rich burgundy tones offer a fresh update to traditional navy or dark brown.

### SEASONAL

### CORE



Black **D**



Dark Shadow  
19-3906 TPG **D**



Charcoal Gray  
18-0601 TPG **L**



Fog  
13-0607 TPG **L**



Demitasse  
19-0712 TPG **D**



Brunette  
19-1235 TPG **D**



Monk's Robe  
18-1048 TPG **D**



Clove  
18-1320 TPG **D**



Fossil  
17-0909 TPG **L**



Starfish  
16-1120 TPG **L**



Madder Brown  
19-1331 TPG **D**



Leather Brown  
18-1142 TPG **L**



Galapagos Green  
18-5725 TPG **D**



Fresh Salmon  
16-1542 TPG **L**



Sodalite Blue  
19-3953 TPG **D**



Mineral Yellow  
15-1046 TPG **L**



Molten Lava  
18-1555 TPG **D**



Grape Wine  
19-2315 TPG **D**



Festival Fuschia  
19-2434 TPG **D**



Cashew  
17-1137 TPG **L**



Natural **L**



Peacoat  
19-3920 TPG **D**



Olive Night  
19-0515 TPG **D**

# Booster

PRODUCT FEATURES: A soft nubuck with a geometric deboss pattern. The deboss print gives the article a two tone look.



## Environmental Impact of Booster



=



+



One Pair of Shoes  
(2.5 sqft per pair)

**8.38**  
US Gallons  
of Water Saved

**301.70**  
Lighting  
Hours Saved

\*Please check LITE CONCEPT insert for a full LITE Explanation.

Temper	Color Range Available	Weight Range Available	Oil Content ± 2%	Milling Pattern
3.5 (+/- 0.5) @25mm	Medium - Dark	1.2 - 1.6mm	13%	Embossed & Tumbled
Waterproof <input type="checkbox"/> Non Waterproof <input checked="" type="checkbox"/>			Shoe Finishing Suggestion	
• Waterproof version is not available.			No finishing needed.	

# Calm

PRODUCT FEATURES: A beautiful veg retan with a surprisingly soft temper. CALM offers a smooth classic look and burnishability to create high end looks.

Fossil 17-0909 TPG

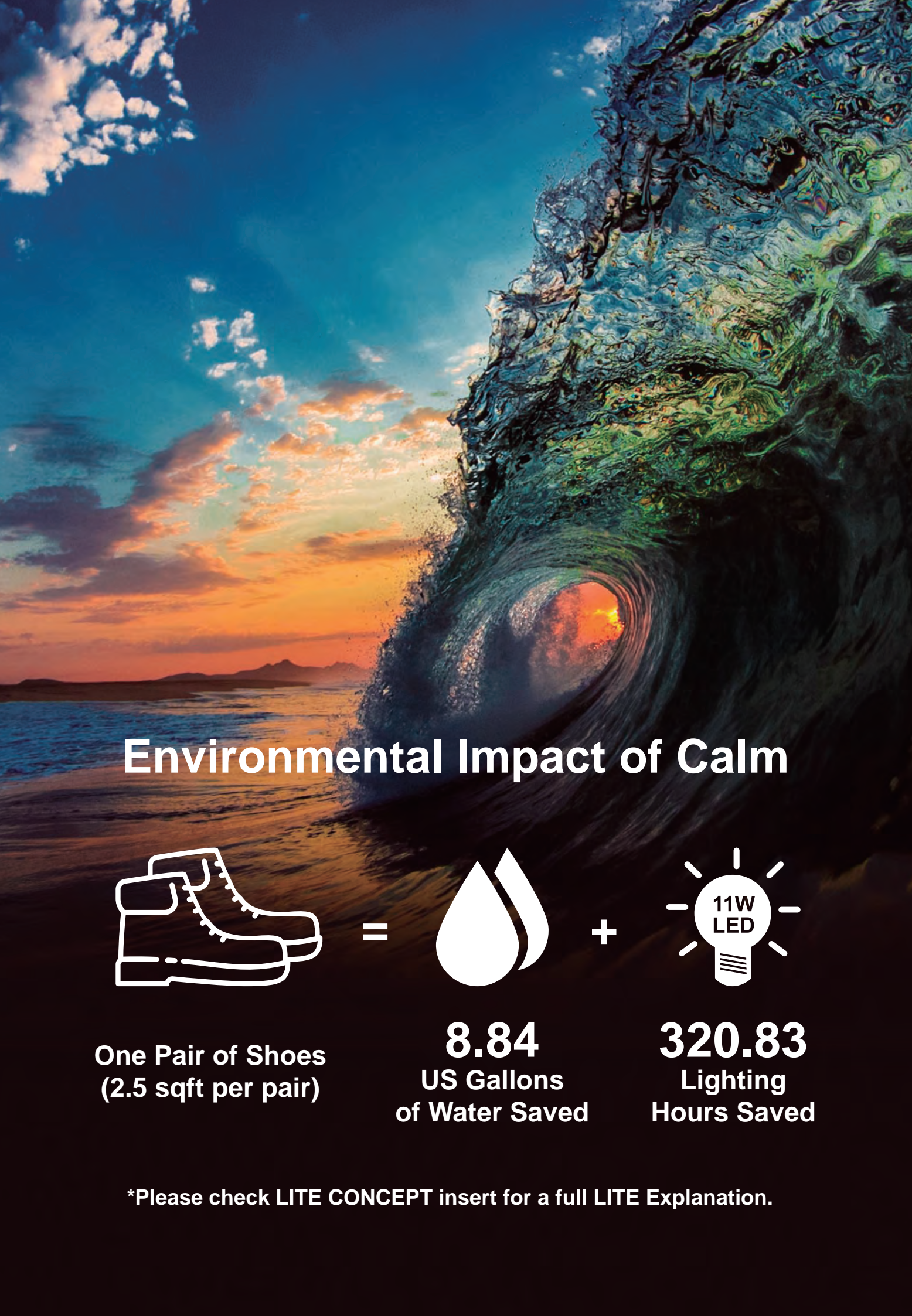
Demitasse 19-0712 TPG

Cashew 17-1137 TPG

Peacoat 19-3920 TPG

Olive Night 19-0515 TPG

Temper	Color Range Available	Weight Range Available	Oil Content ± 2%	Milling Pattern
2.3 (+/- 0.5) @25mm	Medium - Dark	1.2 - 1.8mm	10%	None
Waterproof <input type="checkbox"/> Non Waterproof <input checked="" type="checkbox"/>			Shoe Finishing Suggestion	
• Waterproof version is not available.			Ability to receive dark burnish with high RPM on cotton wheel.	



## Environmental Impact of Calm



One Pair of Shoes  
(2.5 sqft per pair)

=



8.84  
US Gallons  
of Water Saved

+



320.83  
Lighting  
Hours Saved

\*Please check LITE CONCEPT insert for a full LITE Explanation.





# Cashmere WP

PRODUCT FEATURES: Soft and spongy, CASHMERE WP is the nubuck everyone will need for comfortable fall / winter trends.



## Environmental Impact of Cashmere WP



=



+



One Pair of Shoes  
(2.5 sqft per pair)

8.12  
US Gallons  
of Water Saved

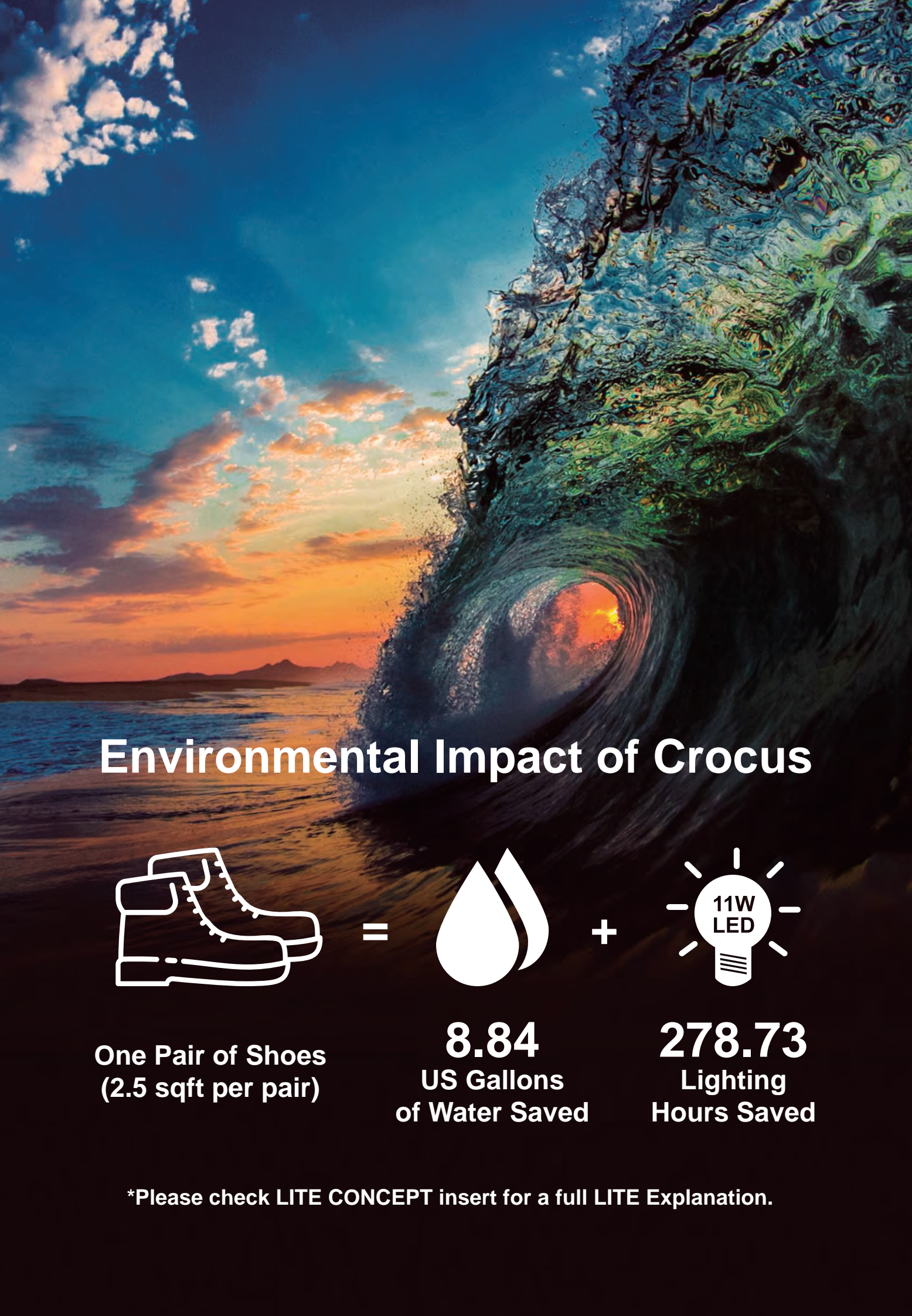
298.30  
Lighting  
Hours Saved

\*Please check LITE CONCEPT insert for a full LITE Explanation.

Temper	Color Range Available	Weight Range Available	Oil Content ± 2%	Milling Pattern
3.5 (+/- 0.5) @25mm	Light - Dark	1.2 - 1.8mm	12%	Heavy
Waterproof <input checked="" type="checkbox"/> Non Waterproof <input type="checkbox"/>			Shoe Finishing Suggestion	
Waterproof Spec: 15,000 Flexes. Absorption: 20% after 15,000 Flexes. Wicking: 10mm after 1 hour. • Non waterproof version - <b>Cashmere</b> is available.			No finishing needed.	

# Crocus

PRODUCT FEATURES: A fun reptile emboss in brightly waxed colors, CROCUS helps bring a classic tailored look to the party.



## Environmental Impact of Crocus



=



+



One Pair of Shoes  
(2.5 sqft per pair)

**8.84**  
US Gallons  
of Water Saved

**278.73**  
Lighting  
Hours Saved

\*Please check LITE CONCEPT insert for a full LITE Explanation.

Temper	Color Range Available	Weight Range Available	Oil Content ± 2%	Milling Pattern
1.5 (+/- 0.5) @25mm	Medium - Dark	1.4 - 1.8mm	18%	Embossed
Waterproof <input type="checkbox"/> Non Waterproof <input checked="" type="checkbox"/>			Shoe Finishing Suggestion	
• Waterproof version is not available.			Brush with cotton wheel to restore shine.	

# Discovery WP SS Washable

PRODUCT FEATURES: DISCOVERY WP SS WASHABLE is a powerhouse performance leather passing multiple specifications for: Waterproof, Saline Solution and Washable all in one!





**Black**



**Charcoal Gray 18-0601 TPG**



**Fog 13-0607 TPG**



**Sodalite Blue 19-3953 TPG**



**Fresh Salmon 16-1542 TPG**

Temper	Color Range Available	Weight Range Available	Oil Content ± 2%	Milling Pattern
2.0 (+/- 0.5) @25mm	Light - Dark	1.2 - 2.0mm	8%	None
Waterproof <input checked="" type="checkbox"/> Non Waterproof <input type="checkbox"/>			Shoe Finishing Suggestion	
<small>Waterproof Spec: 15,000 Flexes. Absorption: 20% after 15,000 Flexes. Wicking: 10mm after 1 hour. • Non waterproof version is not available.</small>			No finishing needed.	



## Environmental Impact of Discovery WP SS Washable



=



+



**One Pair of Shoes  
(2.5 sqft per pair)**

**8.07  
US Gallons  
of Water Saved**

**285.04  
Lighting  
Hours Saved**

\*Please check LITE CONCEPT insert for a full LITE Explanation.

# Molly

PRODUCT FEATURES: Softly deconstructed with fine matte finishing and extremely soft temper. A great, light weight casual.

**Sodalite Blue 19-3953 TPG**

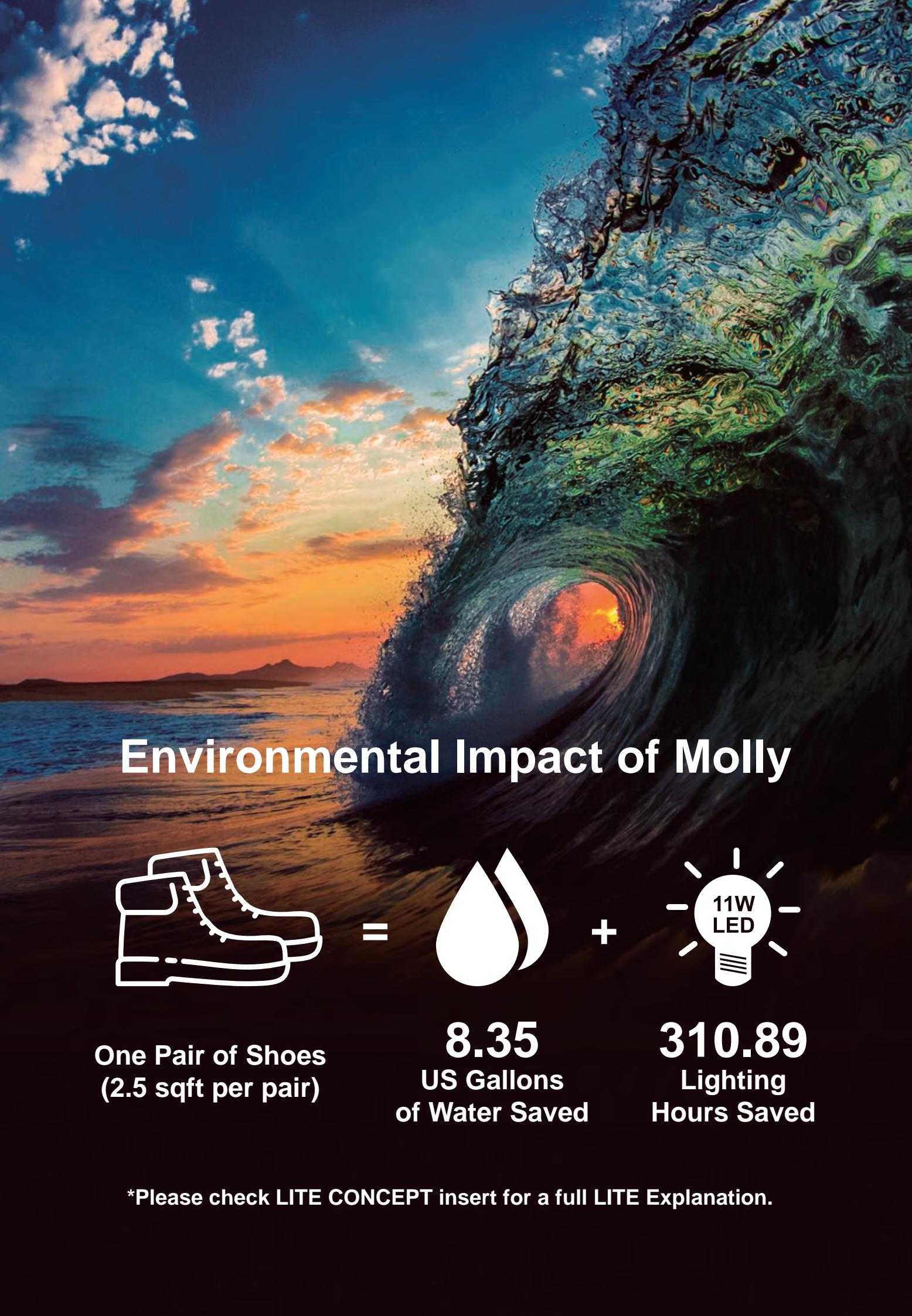
**Fresh Salmon 16-1542 TPG**

**Mineral Yellow 15-1046 TPG**

**Grape Wine 19-2315 TPG**

**Natural**

Temper	Color Range Available	Weight Range Available	Oil Content ± 2%	Milling Pattern
5.0 (+/- 0.5) @25mm	Light - Dark	0.8 - 1.2mm	10%	Heavy
Waterproof <input type="checkbox"/> Non Waterproof <input checked="" type="checkbox"/>			Shoe Finishing Suggestion	
• Waterproof version is not available.			No finishing needed.	



## Environmental Impact of Molly



=



+



One Pair of Shoes  
(2.5 sqft per pair)

**8.35**  
US Gallons  
of Water Saved

**310.89**  
Lighting  
Hours Saved

\*Please check LITE CONCEPT insert for a full LITE Explanation.

# Overdrive WP



PRODUCT FEATURES: A premium milled veg retan with rich burnished tipping. OVERDRIVE WP has a classic surface quality and plump hand.



**Brunette 19-1235 TPG**



**Dark Shadow 19-3906 TPG**



**Sodalite Blue 19-3953 TPG**

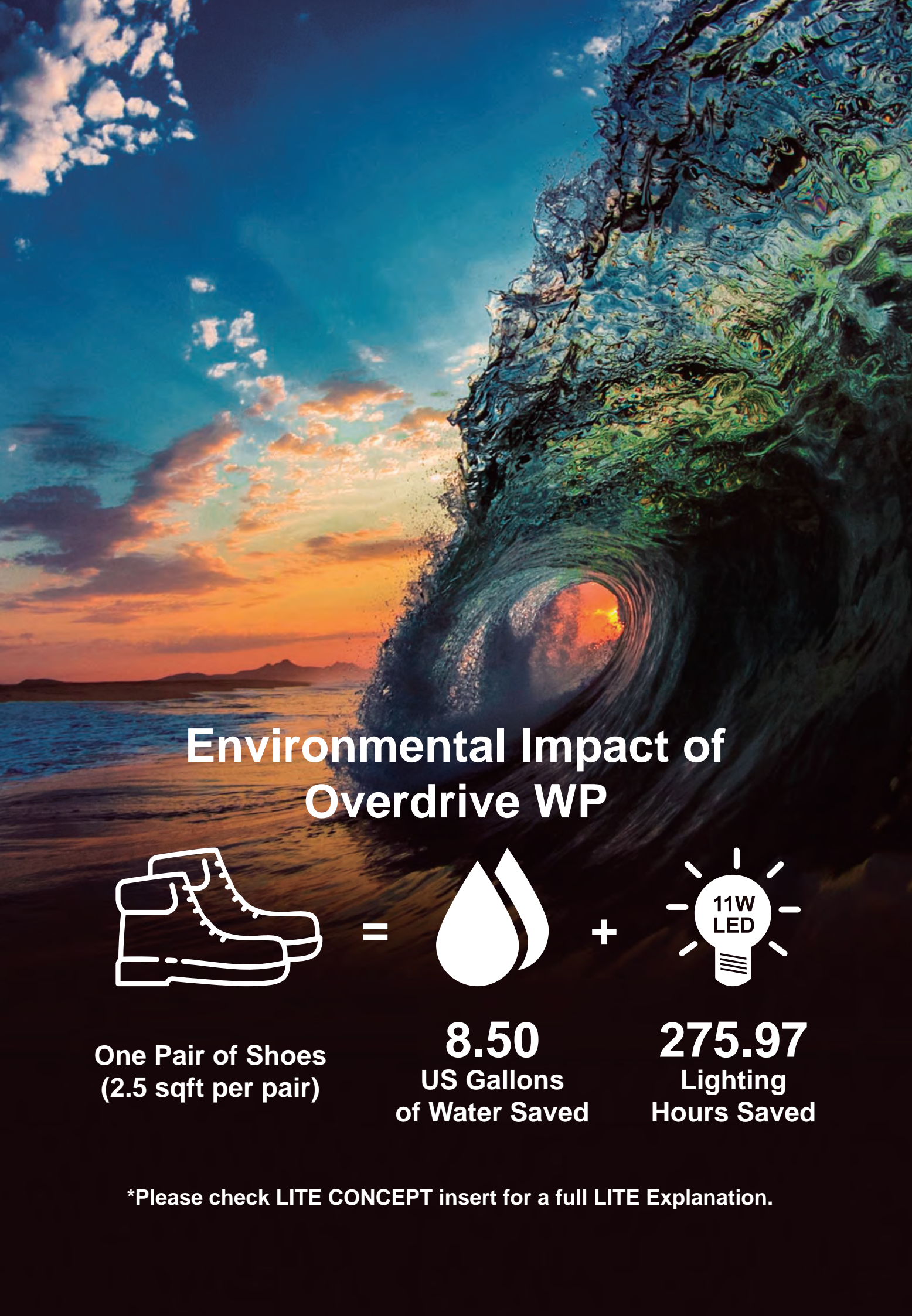


**Grape Wine 19-2315 TPG**



**Mineral Yellow 15-1046 TPG**

Temper	Color Range Available	Weight Range Available	Oil Content ± 2%	Milling Pattern
2.0 (+/- 0.5) @25mm	Medium - Dark	1.2 - 2.0mm	18%	Heavy
Waterproof <input checked="" type="checkbox"/> Non Waterproof <input type="checkbox"/>			Shoe Finishing Suggestion	
<small>Waterproof Spec: 15,000 Flexes. Absorption: 20% after 15,000 Flexes. Wicking: 10mm after 1 hour.                      • Non waterproof version - <b>Overdrive</b> is available.</small>			Leave as is or polish with a cotton wheel to restore shine.	



## Environmental Impact of Overdrive WP



=



+



**One Pair of Shoes  
(2.5 sqft per pair)**

**8.50  
US Gallons  
of Water Saved**

**275.97  
Lighting  
Hours Saved**

\*Please check LITE CONCEPT insert for a full LITE Explanation.

# Plunge

PRODUCT FEATURES: An inspiration for cozy comfort, PLUNGE is a new, naturally milled full grain perfect for all styles where softness is important.

Peacoat 19-3920 TPG

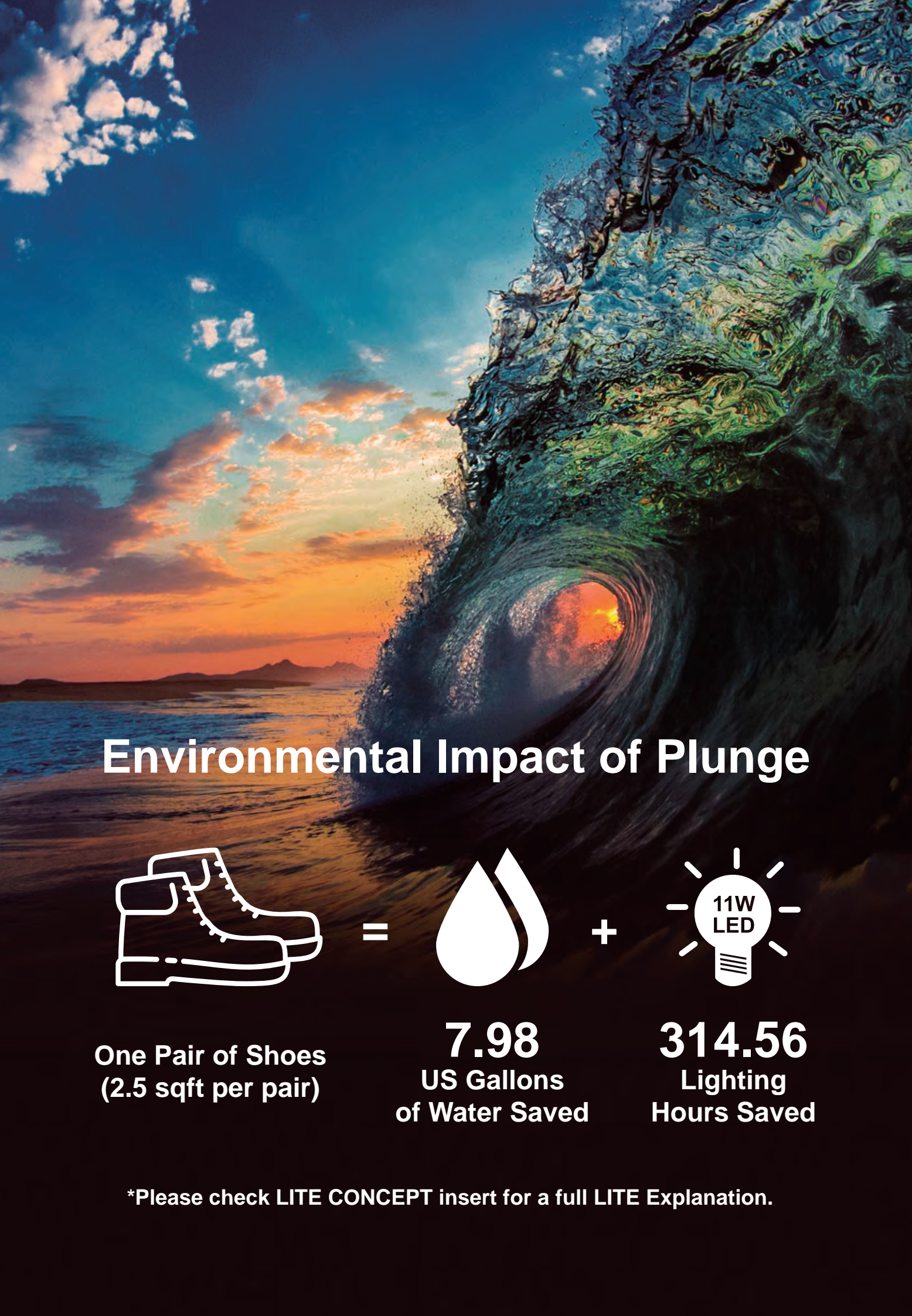
Black

Fog 13-0607 TPG

Molten Lava 18-1555 TPG

Mineral Yellow 15-1046 TPG

Temper	Color Range Available	Weight Range Available	Oil Content ± 2%	Milling Pattern
4.0 (+/- 0.5) @25mm	Light - Dark	1.2 - 1.8mm	10%	Heavy
Waterproof <input type="checkbox"/> Non Waterproof <input checked="" type="checkbox"/>			Shoe Finishing Suggestion	
• Waterproof version - <i>Plunge WP</i> is available.			Leave as is or polish with cotton wheel to restore shine.	



## Environmental Impact of Plunge



=



+



One Pair of Shoes  
(2.5 sqft per pair)

**7.98**  
US Gallons  
of Water Saved

**314.56**  
Lighting  
Hours Saved

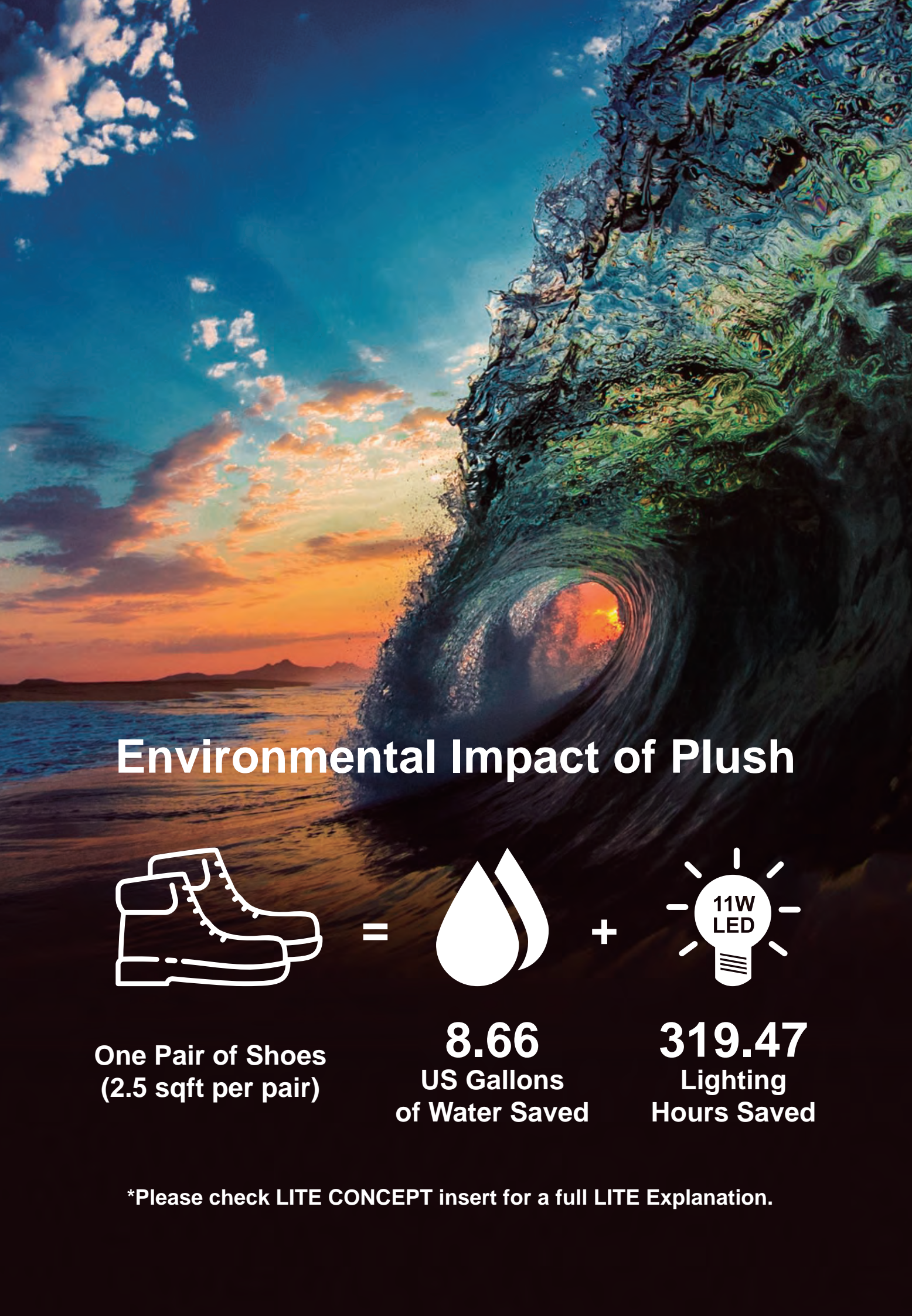
\*Please check LITE CONCEPT insert for a full LITE Explanation.

# Plush

PRODUCT FEATURES: A reverse or fleshout tannage, PLUSH has drapey softness in beautiful colors and "sueded" nap. A nice option for unlined slippers or moccasin styles.



Temper	Color Range Available	Weight Range Available	Oil Content ± 2%	Milling Pattern
4.0 (+/-0.5) @1.2 - 1.6mm 3.5 (+/-0.5) @1.6 - 2.0mm	Light - Dark	1.2 - 2.0mm	10%	This product is Fleshout, also heavy milled, can see the milling pattern in grain side, flesh side shows mostly smooth.
Waterproof <input type="checkbox"/> Non Waterproof <input checked="" type="checkbox"/>			Shoe Finishing Suggestion	
• Waterproof version is not available.			Fleshout. No finishing needed.	



## Environmental Impact of Plush



=



+



One Pair of Shoes  
(2.5 sqft per pair)

**8.66**  
US Gallons  
of Water Saved

**319.47**  
Lighting  
Hours Saved

\*Please check LITE CONCEPT insert for a full LITE Explanation.



# Rejuvenate Washable

PRODUCT FEATURES: With its natural grain character and softly milled temper, REJUVENATE offers a full grain washable option.



**Black**



**Cashew 17-1137 TPG**



**Galapagos Green 18-5725 TPG**



**Fresh Salmon 16-1542 TPG**



**Sodalite Blue 19-3953 TPG**

Temper	Color Range Available	Weight Range Available	Oil Content ± 2%	Milling Pattern
3.0 (+/- 0.5) @25mm	Light - Dark	1.2 - 1.6mm	10%	Heavy
Waterproof <input type="checkbox"/> Non Waterproof <input checked="" type="checkbox"/>		Shoe Finishing Suggestion		
• Waterproof version is not available.		No finishing needed.		

## Environmental Impact of Rejuvenate Washable



=



+



**One Pair of Shoes**  
(2.5 sqft per pair)

**8.22**  
US Gallons  
of Water Saved

**311.09**  
Lighting  
Hours Saved

\*Please check LITE CONCEPT insert for a full LITE Explanation.



# Revenge Soft

PRODUCT FEATURES: REVENGE SOFT has the perfect temper to provide body, while offering a natural break highlighting the hazy waxed appearance.



## Environmental Impact of Revenge Soft



=



+



One Pair of Shoes  
(2.5 sqft per pair)

**8.61**  
US Gallons  
of Water Saved

**298.13**  
Lighting  
Hours Saved

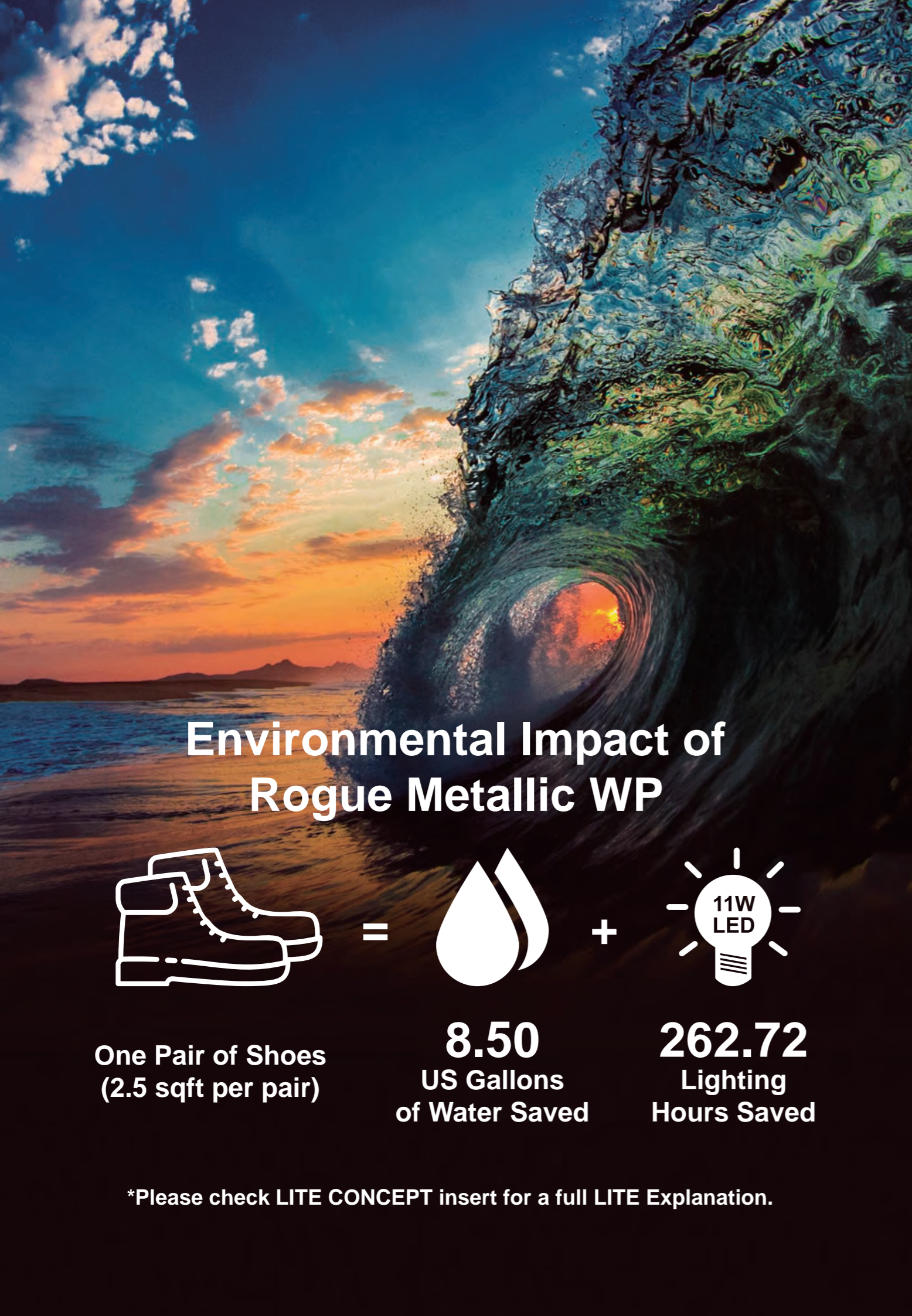
\*Please check LITE CONCEPT insert for a full LITE Explanation.

Temper	Color Range Available	Weight Range Available	Oil Content ± 2%	Milling Pattern
2.5 (+/- 0.5) @25mm	Medium - Dark	1.2 - 1.8mm	16%	Medium
Waterproof <input type="checkbox"/> Non Waterproof <input checked="" type="checkbox"/>			Shoe Finishing Suggestion	
• Waterproof version - <i>Revenge Soft WP</i> is available.			White burnishing wax built in, polish on cotton wheel.	



# Rogue Metallic WP

PRODUCT FEATURES: ROGUE METALLIC WP is a distressed leather with a soft temper. The irregular metallic surface character provides an added patina.



## Environmental Impact of Rogue Metallic WP



=



+



One Pair of Shoes  
(2.5 sqft per pair)

**8.50**  
US Gallons  
of Water Saved

**262.72**  
Lighting  
Hours Saved

\*Please check LITE CONCEPT insert for a full LITE Explanation.

Temper	Color Range Available	Weight Range Available	Oil Content ± 2%	Milling Pattern
3.0 (+/- 0.5) @25mm	Medium - Dark	1.2 - 1.6mm	18%	Heavy
Waterproof <input checked="" type="checkbox"/> Non Waterproof <input type="checkbox"/>			Shoe Finishing Suggestion	
Waterproof Spec: 15,000 Flexes. Absorption: 20% after 15,000 Flexes. Wicking: 10mm after 1 hour. • Non waterproof version - <i>Rogue Metallic</i> is available.			No finishing needed.	

# Sanehorse WP LO



PRODUCT FEATURES: A traditional leather with smooth oiled pull up, however the oil content is low enough for direct inject constructions. SANEHORSE WP LO is a great performance article when low oil content is needed.



## Environmental Impact of Sanehorse WP LO



One Pair of Shoes  
(2.5 sqft per pair)

=



8.07  
US Gallons  
of Water Saved

+



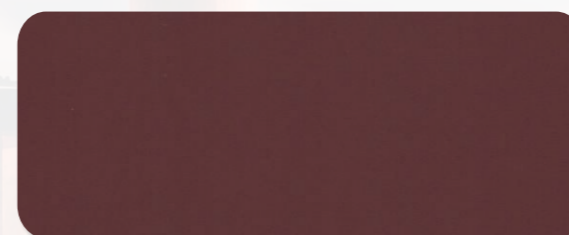
290.06  
Lighting  
Hours Saved

\*Please check LITE CONCEPT insert for a full LITE Explanation.

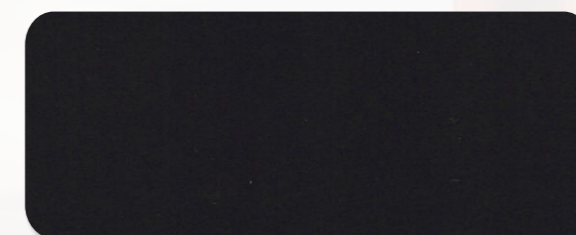
Temper	Color Range Available	Weight Range Available	Oil Content ± 2%	Milling Pattern
2.0 (+/- 0.5) @25mm	Medium - Dark	1.2 - 2.0mm	12%	None
Waterproof <input checked="" type="checkbox"/> Non Waterproof <input type="checkbox"/>			Shoe Finishing Suggestion	
Waterproof Spec: 15,000 Flexes. Absorption: 20% after 15,000 Flexes. Wicking: 10mm after 1 hour. • Non waterproof version - <b>Sanehorse</b> is available.			Restore color and cover small defects apply Greasemat Cream 34100 with sponge. Dry well to allow cream to penetrate into the leather.	

## Smooth Warrior 85

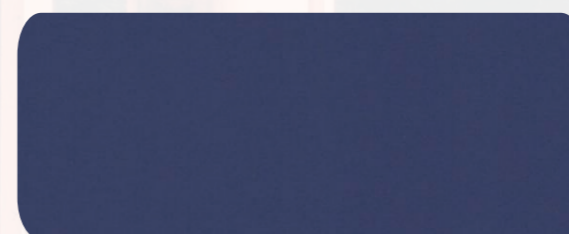
PRODUCT FEATURES: A traditional "Box" tannage with firmer temper and bright, smooth surface. SMOOTH WARRIOR 85 is consistently clean and even.



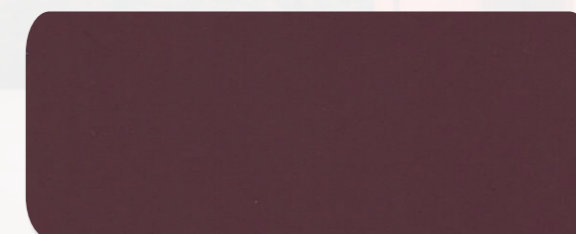
Madder Brown 19-1331 TPG



Black



Sodalite Blue 19-3953 TPG



Grape Wine 19-2315 TPG

## Environmental Impact of Smooth Warrior 85



One Pair of Shoes  
(2.5 sqft per pair)

=



7.84  
US Gallons  
of Water Saved

+



273.65  
Lighting  
Hours Saved

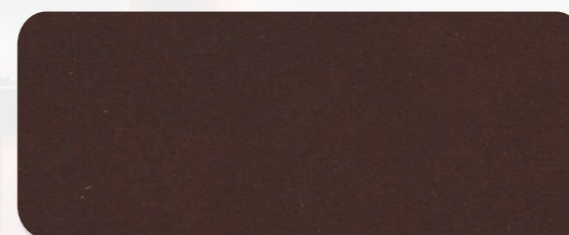
\*Please check LITE CONCEPT insert for a full LITE Explanation.

Temper	Color Range Available	Weight Range Available	Oil Content ± 2%	Milling Pattern
1.5 (+/- 0.5) @25mm	Medium - Dark	1.4 - 1.8mm	8%	None
Waterproof <input type="checkbox"/> Non Waterproof <input checked="" type="checkbox"/>		Shoe Finishing Suggestion		
• Waterproof version is not available.		Brush with cotton wheel to restore shine.		

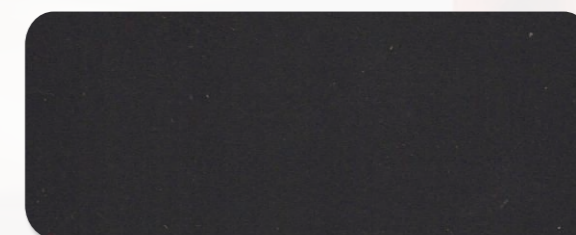
## Snowbird WP SS



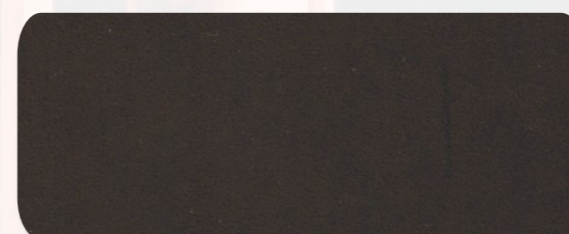
PRODUCT FEATURES: Another article in the Saline Solution, salt resistant collection, SNOWBIRD WP SS offers a clean surface with lightly oiled pull up.



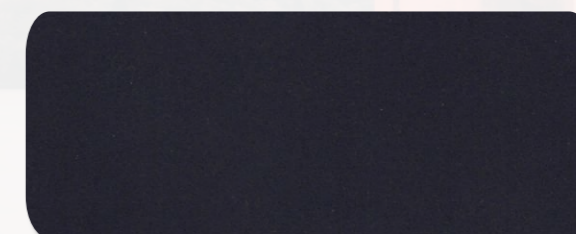
Leather Brown 18-1142 TPG



Demitasse 19-0712 TPG



Fossil 17-0909 TPG



Peacoat 19-3920 TPG

## Environmental Impact of Snowbird WP SS



=



+



One Pair of Shoes  
(2.5 sqft per pair)

**8.07**  
US Gallons  
of Water Saved

**267.70**  
Lighting  
Hours Saved


\*Please check LITE CONCEPT insert for a full LITE Explanation.

Temper	Color Range Available	Weight Range Available	Oil Content ± 2%	Milling Pattern	Feature
2.0 (+/- 0.5) @25mm	Medium - Dark	1.2 - 1.8mm	16%	Light break	Saline Solution
Waterproof <input checked="" type="checkbox"/> Non Waterproof <input type="checkbox"/>			Shoe Finishing Suggestion		
Waterproof Spec: 15,000 Flexes. Absorption: 20% after 15,000 Flexes. Wicking: 10mm after 1 hour. • Non waterproof version is not available.			No finishing needed. Could affect Saline Solution treatment.		

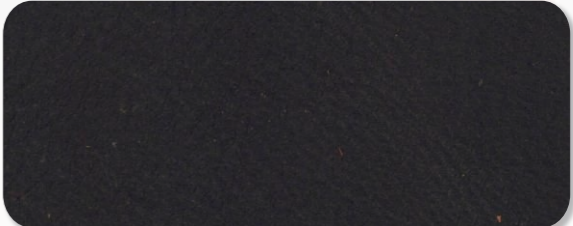
# Tailgate WP EN



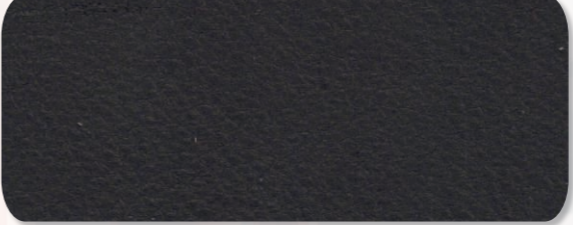
PRODUCT FEATURES: When both ruggedness and softness is needed, TAILGATE WP EN is a great option with natural milling and lightly oiled character.



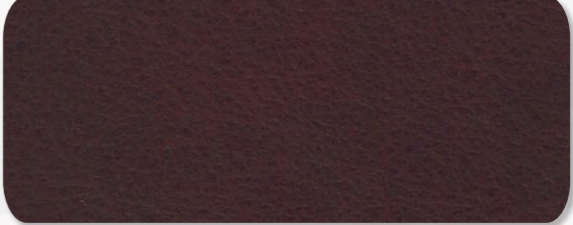
Cashew 17-1137 TPG




Dark Shadow 19-3906 TPG



Demitasse 19-0712 TPG



Madder Brown 19-1331 TPG



Leather Brown 18-1142 TPG

## Environmental Impact of Tailgate WP EN



=



+










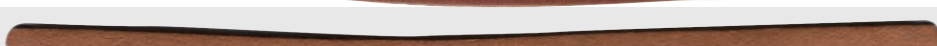
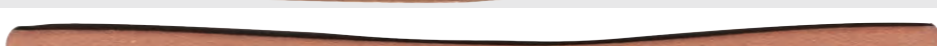


One Pair of Shoes  
(2.5 sqft per pair)

**7.59**  
US Gallons  
of Water Saved

**283.14**  
Lighting  
Hours Saved

\*Please check LITE CONCEPT insert for a full LITE Explanation.

Temper	Color Range Available	Weight Range Available	Oil Content ± 2%	Milling Pattern
3.5 (+/- 0.5) @25mm	Medium - Dark	1.2 - 2.0mm	18%	Heavy
Waterproof <input checked="" type="checkbox"/> Non Waterproof <input type="checkbox"/>			Shoe Finishing Suggestion	
<small>Waterproof Spec: 15,000 Flexes. Absorption: 20% after 15,000 Flexes. Wicking: 10mm after 1 hour. • Non waterproof version - <b>Tailgate</b> is available.</small>			<small>Restore color by applying Greasemat Cream 34100 with sponge. Dry well to allow cream to penetrate into the leather.</small>	

<b>Galapagos Green</b> <small>*Auburn Leather #629 Green Mountain</small>	
<b>Fresh Salmon</b> <small>*Auburn Leather #345 Desert Flower</small>	
<b>696 Sodalite Blue</b>	
<b>660 Mineral Yellow</b>	
<b>Molten Lava</b> <small>*Auburn Leather #307 Cherry Tomato</small>	
<b>Grape Wine</b> <small>*Auburn Leather #737 Potent Purple</small>	
<b>Festival Fuschia</b> <small>*Auburn Leather #634 Berry Frap</small>	
<b>282-100 Black</b>	
<b>601 Dark Shadow 19-3906 TPG</b>	
<b>602 Charcoal Gray 18-0601 TPG</b>	
<b>Fog 13-0607 TPG</b> <small>*Auburn Leather #736 DT Birch</small>	
<b>Demitasse</b> <small>*Auburn leather #11Dk Coffee</small>	
<b>Brunette 19-1235 TPG</b> <small>*Auburn Leather #14 Chocolate</small>	
<b>606 Monk's Robe 18-1048 TPG</b>	
<b>608 Clove 18-1320 TPG</b>	
<b>Fossil</b> <small>*Auburn Leather #711 DT Fossil</small>	
<b>Starfish 16-1120 TPG</b> <small>*Auburn Leather #65 Tan</small>	
<b>Madder Brown 19-1331 TPG</b> <small>*Auburn Leather #729 DT Red</small>	
<b>Leather Brown 18-1142 TPG</b> <small>*Auburn Leather #30SH SH Tan</small>	
<b>Cashew 17-1137 TPG</b> <small>*Auburn Leather #62 Bulldog</small>	
<b>Natural</b> <small>*Auburn Leather #707 Thru Natural</small>	
<b>604 Peacoat 19-3920 TPG</b>	
<b>605 Olive Night 19-0515 TPG</b>	

**Auburn Multi-color Round Lace**

709 Yellow-Red-Blue



721 Yellow-Orange-Red



722 Purple-Green-Blue



723 Orange-Red-Purple



724 Yellow-Green-Blue



740 Camo Army



**Auburn Metallic Foil**

800-809/215 Gold Foil



809 Platinum Foil



803-811/215 Rose Gold Foil



827 Gun Metal Foil



818 Black Metallic Foil



832 Dress Blue Metallic Foil



**Pathfinder**

Economical, leather lace. Surface finishing reduces natural shade variance/cosmetic blemishes resulting in a more finished-looking lace. Great competitive price option for slippers, driver mocs and value collections.

**Classic**

The original full-grain leather BOAT SHOE lace for active, outdoor use. Aniline-dyed to retain the natural look of the leather. Engineered for function to deliver superior strength, suppleness and tie-ability.

**Classic Plus**

Classic Plus is our sealed version of Classic designed for suede, canvas or other non full-grain leather uppers, which demand improved crock resistance & color fastness to water.

**Muddy River**

Full grain leather lace with waxy surface. Mellow temper and supple hand provides a beautiful tied knot, ideally suited for athleisure/sneaker styles. Produced to match ISA Muddy River upper LITE leather tannage.

**Round**

Cylindrical-cut version of our Classic lace. Natural waxed finish offers a softer, subtle look for casual boots, sneakers and athleisure styles. NEW! Multi-Color Round provide vivid, eye-catching color combinations.

**Cougar**

Oil-tanned, full grain leather lace. Developed primarily for full-grain leather boots, with its all-weather durability and enhanced pull strength.

**Stay Dry**

Non-Wicking full grain leather lace. Designed for any and all outdoor footwear styles requiring non-wicking performance. Meets SATRA TM305 standard.

**Specialty Foil**

Laminated foil version of Classic leather lace available in bright metallics add a splash of character to any footwear style.



**ISA TanTec Ltd.**

Headquarters  
Avenida Da Praia Grande N 619  
Comercial Si Toi 5 Andar 8, 999078, Macau  
Tel: +853 2835 6320

**Mississippi TanTec Leather, Inc.**

101 TanTec Way,  
Vicksburg, MS 39183, USA  
Tel: +1 601 429 6081

**Saigon TanTec Leather Ltd.**

Lot M2-M3, Viet Huong 2 Industrial Park,  
An Tay Village, Ben Cat District,  
Binh Duong Province, Vietnam  
Tel: +84 274 357 9101/357 9102

**TransAsia TanTec Ltd.**

Lot B6.1, C4 Street,  
Thanh Thanh Cong Industrial Park, An Hoi Quarter,  
An Hoa Ward, Trang Bang Town,  
Tay Ninh Province, 840000 Viet Nam  
Tel: +84 276 388 3382

**Heshan TanTec Leather Co., Ltd.**

No. 1 Xingli Road,  
Hecheng Town, Heshan City,  
Guangdong Province, 529727, China  
Tel: +86 750 831 3280 / 831 3294

Send us an email to [info@tantec1.com](mailto:info@tantec1.com)  
for inquiries.



The Brand > Behind The Brand

---

ISA INDUSTRIAL LTD. [WWW.LITELEATHER.COM](http://WWW.LITELEATHER.COM)  
MACAU (CHINA) | USA | VIETNAM | CHINA | HONG KONG (CHINA)

