



LOST

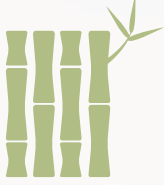
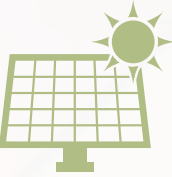




# Camp Life

ALWAYS EXPLORING

• SPRING / SUMMER 2023 TOOLBOX •

As a tannery, ISA TanTec is committed to conserve the environment and resources. Sustainability is an important part of ISA's identity. In 2003, ISA TanTec developed the **LITE** (Low Impact To the Environment) concept which defines a high standard of environmental sustainability in the manufacturing process.

### Lite Features



	<p><b>Bamboo Wall</b></p> <p>Our bamboo walls not only provide comfortable, natural ventilation for our employees, but they also save energy by limiting the need for fans on the production floors.</p>
	<p><b>Solar System</b></p> <p>Our solar system is used to heat production water in the replacement of traditional heating sources such as diesel oil.</p>
	<p><b>Rain Lagoon</b></p> <p>Our lagoon collects 27,300 tons of rainwater per year that is used for both production and greenery.</p>
	<p><b>Wind Energy</b></p> <p>Rainwater is pumped from our lagoon into production by wind power. This saves 5,189 kwh and reduces 4,006 kg of CO2 emission per year.</p>
	<p><b>Natural Light</b></p> <p>Green Building technology has been adopted in our tannery to reduce energy consumption. We have opaque light panels in our ceilings, maximizing the use of natural light during the day.</p>
	<p><b>Wetland</b></p> <p>Our constructed wetlands system is set up with an automated control of water levels, allowing a natural purification process without generating emissions. It creates a biomass fuel and helps us in reducing our carbon footprint by 245kwh/year/sqm.</p>

*Together We Save!*

## Environmental Impact



Compare the energy and water savings of ISA products when choosing leathers for adoption. The choice you make can positively influence the impact to the environment!

Article	HRS saved for lighting a 11W lamp 	US gallons of water saved 
Aster	275.91	8.77
Ballerina	305.79	8.77
Blink	276.46	8.80
Breathe Easy WP SS	286.59	8.47
Brilliant	309.36	8.79
Chronicle	324.69	9.13
Maldova WP / Maldova 83 WP	291.43	8.85
Onice Soft 85	295.22	8.79
Plunge	317.91	8.77
Plush	317.02	9.10
Rejuvenate Washable	305.77	8.64
Shaun	303.05	8.79
Soft Lagoon	314.41	8.80
Ventress	297.25	8.79
Molly Deboss #10	310.42	8.77
Auburn Leather Laces	11.46	0.36

The numbers are showing the lighting hours and water an article will save to make one pair of shoes (2.5 sqft of leather) or one pair of laces (0.13 sqft of leather), comparing to the latest LWG Pass Score (50%) of 67.2 MJ/m2 for energy consumption and 178L/m2 for water consumption.

LWG (Leather Working Group), a multi-stakeholder group, develops and maintains a protocol that assesses the compliance and environmental performance of tanners, promotes and appreciates environmental business practices within the leather industry.





### Saline Solution

A technical innovation for salt resistance suitable for every day wear in both summer and winter seasons.



### Spotless

“Spotless” stain resistant leather stands up to coffee, wine, ketchup and food oil with no visible color change.



### Machine Washable

A specially developed leather that can be machine washed for easy cleaning.



### V2O VuICAN

VuICAN leathers has lower oil content (Max.12%) allowing for sole adhesion during vulcanized shoe making.



### PFC Free Waterproof Leather

While ISA strives to produce premium waterproof and dirt repellent leather, all products are free from PFCs (PFC-Free).



### ISA Works

Leather designed for use in the toughest industries. Construction, Agriculture, Military, Duty, Fire Fighting, to name a few.

## CONTACT US

Ronda de Bie, Senior Vice President of Sales  
ronda@tantec1.com • +86-138-2235-9856

Keith Hill, Vice President Business Development  
keith@tantec1.com • +86-186-8833-3390

Peter Peng, Director of Sales China & Vietnam  
peter.peng@tantec1.com • +86-138-0254-8822

Gordon Wemmitt, US Sales Director  
gordon@tantec1.com • +1-510-759-9873

Steffen Weih, European Sales Manager  
steffen@tantec1.com • +49-170-527-7700

Jothi (JP) Prakasam, Sales Director – India & Bangladesh  
jp@tantec1.com • +91-896-200-2706

Selina Yang, MTL CS & Sales Administration  
selina@tantec1.com • +1-601-529-1636

Emily Satterthwaite, Account Manager  
emily@tantec1.com • +1-616-633-0338

Shannon Brozyna, Account Manager  
shannon@tantec1.com • +1-207-570-8933

Matthew Feuer, US Sales - The Leather Group  
matt@tantec1.com • +1-203-505-2074

Bob Joyce, US Sales - The Leather Group  
bob@tantec1.com • +1-603-828-8581

Robert Hood, Canadian Sales - R.F. Hood Ltd.  
robert@rfhoodlimited.com • +1-416-293-6723

Tommy Tan, Asia Sales  
tommy.tan@tantec1.com • +86-137-9705-9313

David Ouyang, Asia Sales  
david-o@tantec1.com • +86-135-3902-5289

Bill Chen, Asia Sales  
bill@tantec1.com • +86-138-2239-0521



## CONTACT US

Seven Yang, Asia Sales  
seven@tantec1.com • +86-134-1300-0138

Tina Zhang, Asia Sales  
tina@tantec1.com • +86-134-1597-2030

Andy Yang, Asia Sales  
andy@tantec1.com • +84-931-532-552

Dan Zhao, Asia Sales  
dan@tantec1.com • +86-138-2802-1919

Poland Feng, Asia Sales  
Poland@tantec1.com • +86-135-0901-5119

Javan Feng, Asia Sales  
javan@tantec1.com • +86-134-2260-8568

Mark Zhang, Asia Sales  
mark@tantec1.com • +86-138-2720-1324

Duncan Xu, Asia Sales  
duncan@tantec1.com • +86-135-0900-6350

Franky Mou, Commercialization Supervisor  
franky@tantec1.com • +86-139-2629-5081

Adam D. Simon, Director of Sales &  
Marketing, ISA Auburn Leather  
adam@tantec1.com • +1-404-991-0723

Janice Rigsby, Account Manager, ISA Auburn  
Leather  
janice@tantec1.com • +1-270-542-4116 x17

Arosia Yu, Director CS (US/CN/VN)  
arosia@tantec1.com • +86-138-2802-2722

Jany Phan, Vietnam CS  
jany@tantec1.com • +84-90-8061894

Gillian Tang, Director Marketing and Public  
Relations  
gillian@tantec1.com • +853-6263-0008

### ISA TanTec Ltd.

Headquarters  
Avenida Da Praia Grande N 619,  
Comercial Si Toi, 5 Andar 8, 999078, Macau  
Tel: + 853-2835-6320

### Mississippi TanTec Leather, Inc.

101 TanTec Way, Vicksburg, MS 39183, USA  
Tel: +1-601-429-6081

### Saigon TanTec Leather Ltd.

Lot M2-M3, Viet Huong 2 Industrial Park,  
An Tay Village, Ben Cat District,  
Binh Duong Province, Vietnam  
Tel: +84-274-357-9101 / 357-9102

### TransAsia TanTec Ltd.

Lot B6.1, C4, Thanh Thanh Cong IP,  
An Hoi Quarter, An Hoa Ward, Trang Bang  
Town, Tay Ninh Province, 840000, Vietnam  
Tel: +84 276 388 3382

### Heshan TanTec Leather Co., Ltd.

No. 1 Xingli Road,  
Hecheng Town, Heshan City,  
Guangdong Province, 529727, China  
Tel: +86-750-831-3280 / 831-3294

### ISA DG Showroom

Shop 1146-1147, A. Shoes,  
World Footwear Headquarters Base,  
5 Hujing Avenue, Hou jie,  
Dongguan City, Guangdong Province,  
523000, China  
Tel: +86-750-831-3280 / 831-3294



The Brand < Behind The Brand



## ISA CORE Color Palette

As brands continue to maneuver uncertain times, leaning in to our proven CORE palette gives you the piece of mind to know that your colors will execute consistently. Use our CORE color palette as the foundation to build your color stories around. **Clove** continues to be a strong mid-brown tone, perfect for a Spring Summer season. **Monk's Robe** is a classic color offering natural yellow undertones as an alternative to a traditional tan.

## ISA SEASONAL Color Palette

This season we are featuring a set of earthy, muted colors to offset the saturated brights of seasons past. As consumers navigate a balance between the security of core colors and hues that bring exuberance and joy - our SS23 color palette highlights both emotions of hope and stability. Look to **Coral Sands** as a pink/orange hue for a fun, seasonal pop of color. **Loden Forest** will continue as an important color story for the spring season. **Streamside** is a soft blue ideal for a spring season.

## SEASONAL

## CORE

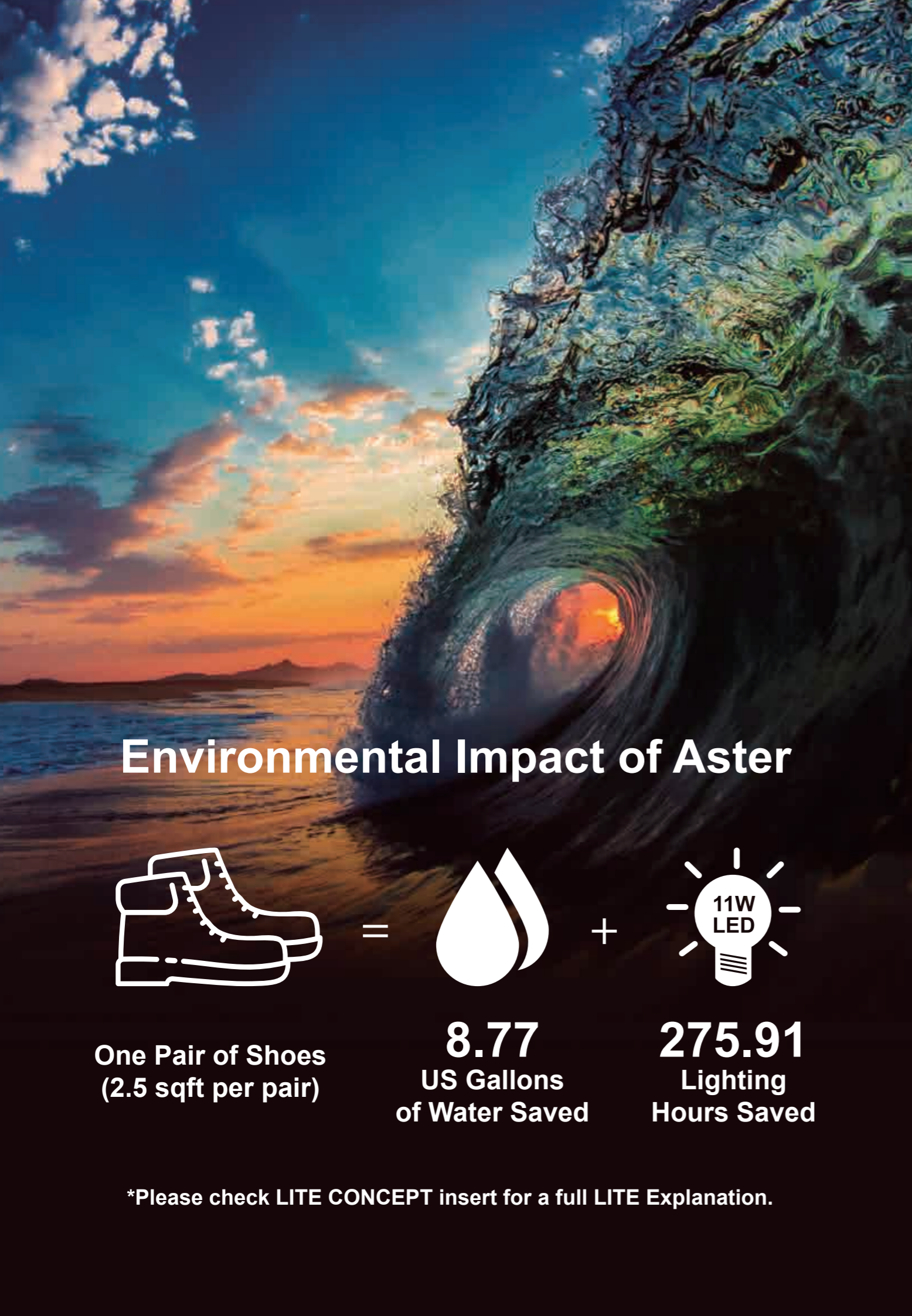


# Aster

Aster is a perfect leather for any sport influenced product. The consistent grain emboss has a soft hand and uniform surface.



Temper	Color Range Available	Weight Range Available	Oil Content ± 2%	Milling Pattern
3.8 (+/- 0.5) @25mm	Light - Dark	1.2 - 1.8mm	10% (+/- 2%)	Embossed
Waterproof <input type="checkbox"/> Non Waterproof <input checked="" type="checkbox"/>			Shoe Finishing Suggestion	
• Waterproof version could be developed.			No finishing needed.	



## Environmental Impact of Aster



=



+



**One Pair of Shoes  
(2.5 sqft per pair)**

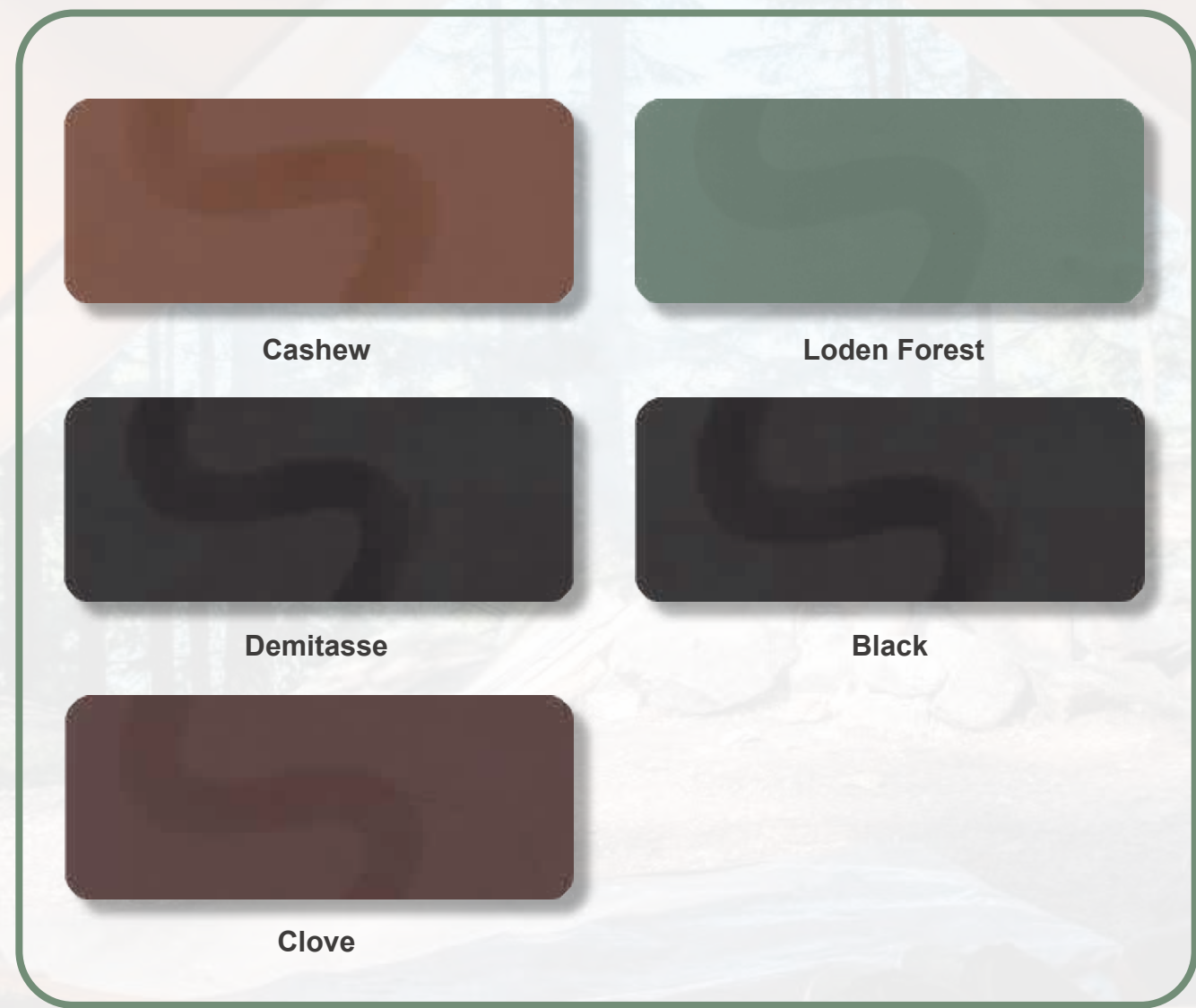
**8.77  
US Gallons  
of Water Saved**

**275.91  
Lighting  
Hours Saved**

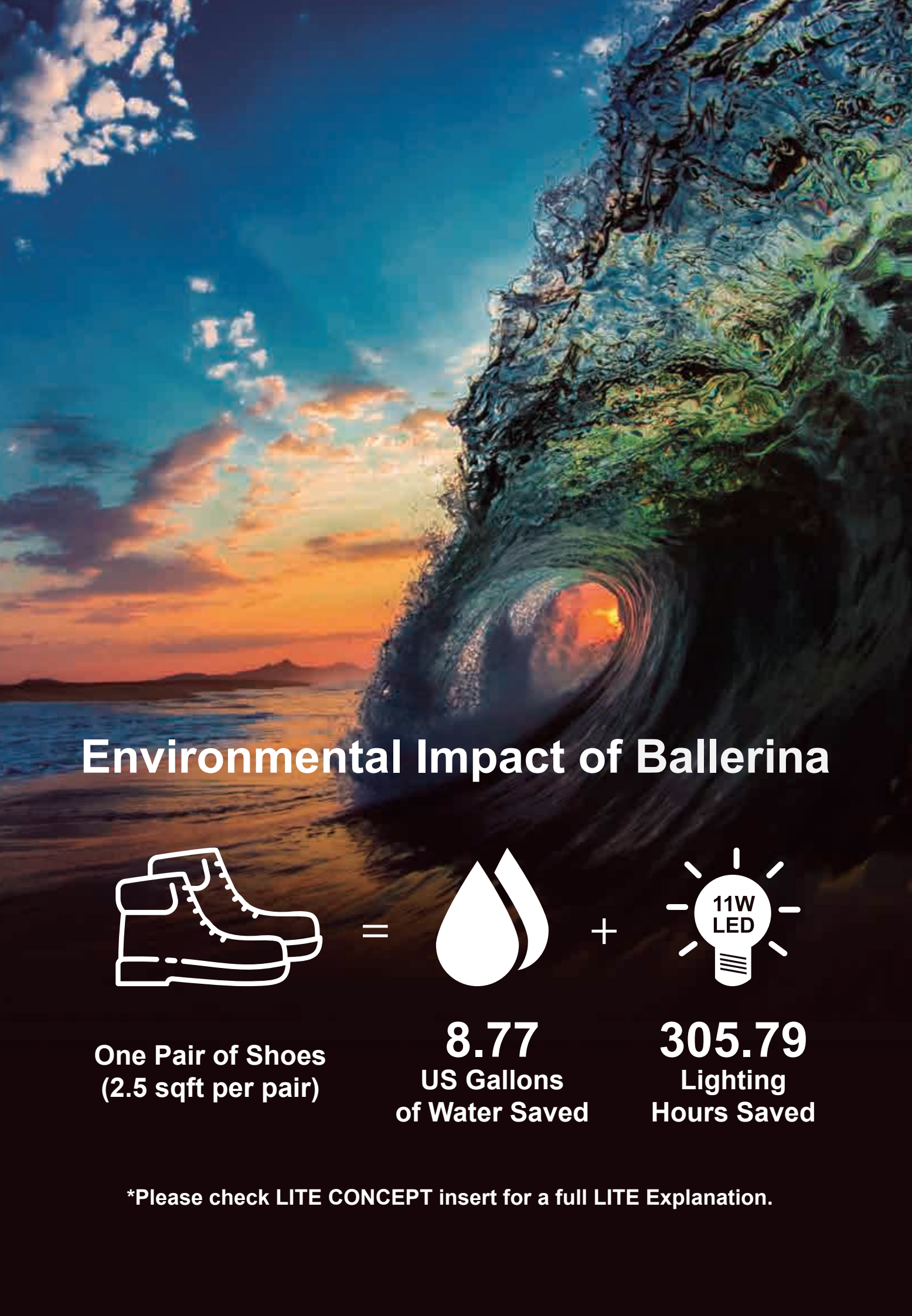
\*Please check LITE CONCEPT insert for a full LITE Explanation.

# Ballerina

An aniline crust tannage with a natural feel and a smooth, tight surface. Ballerina can be burnished for a darkened patina look.



Temper	Color Range Available	Weight Range Available	Oil Content ± 2%	Milling Pattern
1.8 (+/- 0.5) @25mm	Medium - Dark	1.0 - 1.4mm	10% (+/- 2%)	None
Waterproof <input type="checkbox"/> Non Waterproof <input checked="" type="checkbox"/>			Shoe Finishing Suggestion	
• Waterproof version is not available.			Burnishable with crinkle effect. Leather has built in burning waxes, Brush with cotton wheel at 1,500RPM to darken the surface and add shine.	



## Environmental Impact of Ballerina



One Pair of Shoes  
(2.5 sqft per pair)

=



**8.77**  
US Gallons  
of Water Saved

+



**305.79**  
Lighting  
Hours Saved

\*Please check LITE CONCEPT insert for a full LITE Explanation.

# Blink

A fun new brush off leather for Spring. The white brush off top over a bright colored base with fine texture provides great color contrast options.



## Environmental Impact of Blink



One Pair of Shoes  
(2.5 sqft per pair)

=



**8.80**  
US Gallons  
of Water Saved

+



**276.46**  
Lighting  
Hours Saved

\*Please check LITE CONCEPT insert for a full LITE Explanation.

Temper	Color Range Available	Weight Range Available	Oil Content ± 2%	Milling Pattern
3.5 (+/- 0.5) @25mm	Light - Dark	1.2 - 1.8mm	10% (+/- 2%)	Embossed
Waterproof <input checked="" type="checkbox"/> Non Waterproof <input type="checkbox"/>			Shoe Finishing Suggestion	
• Waterproof version is not available.			Brush off white surface, revealing base color underneath.	



# Breathe Easy WP SS

A smooth, clean surface in a high performance leather. Breathe Easy WP SS is a waterproof, breathable leather that dries quickly and also passes our Saline Solution spec. Truly, a high performance leather.





**Brunette**



**Madder Brown**



**Charcoal Gray**



**Black**



**Leather Brown**

Temper	Color Range Available	Weight Range Available	Oil Content ± 2%	Milling Pattern
2.0 (+/- 0.5) @25mm	Medium - Dark	1.2 - 2.0 mm	10% (+/- 2%)	None
Waterproof <input checked="" type="checkbox"/> Non Waterproof <input type="checkbox"/>			Shoe Finishing Suggestion	
<ul style="list-style-type: none"> <li>• Non waterproof version could be developed.</li> <li>• Waterproof Spec: 15,000 Flexes. Absorption: 20% after 15,000 Flexes. Wicking: 10mm after 1 hour.</li> </ul>			No finishing needed.	

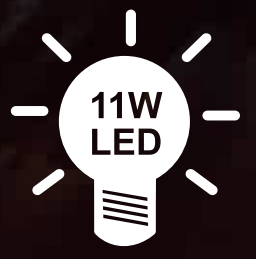
## Environmental Impact of Breathe Easy WP SS



=



+



**One Pair of Shoes  
(2.5 sqft per pair)**

**8.47  
US Gallons  
of Water Saved**

**286.59  
Lighting  
Hours Saved**

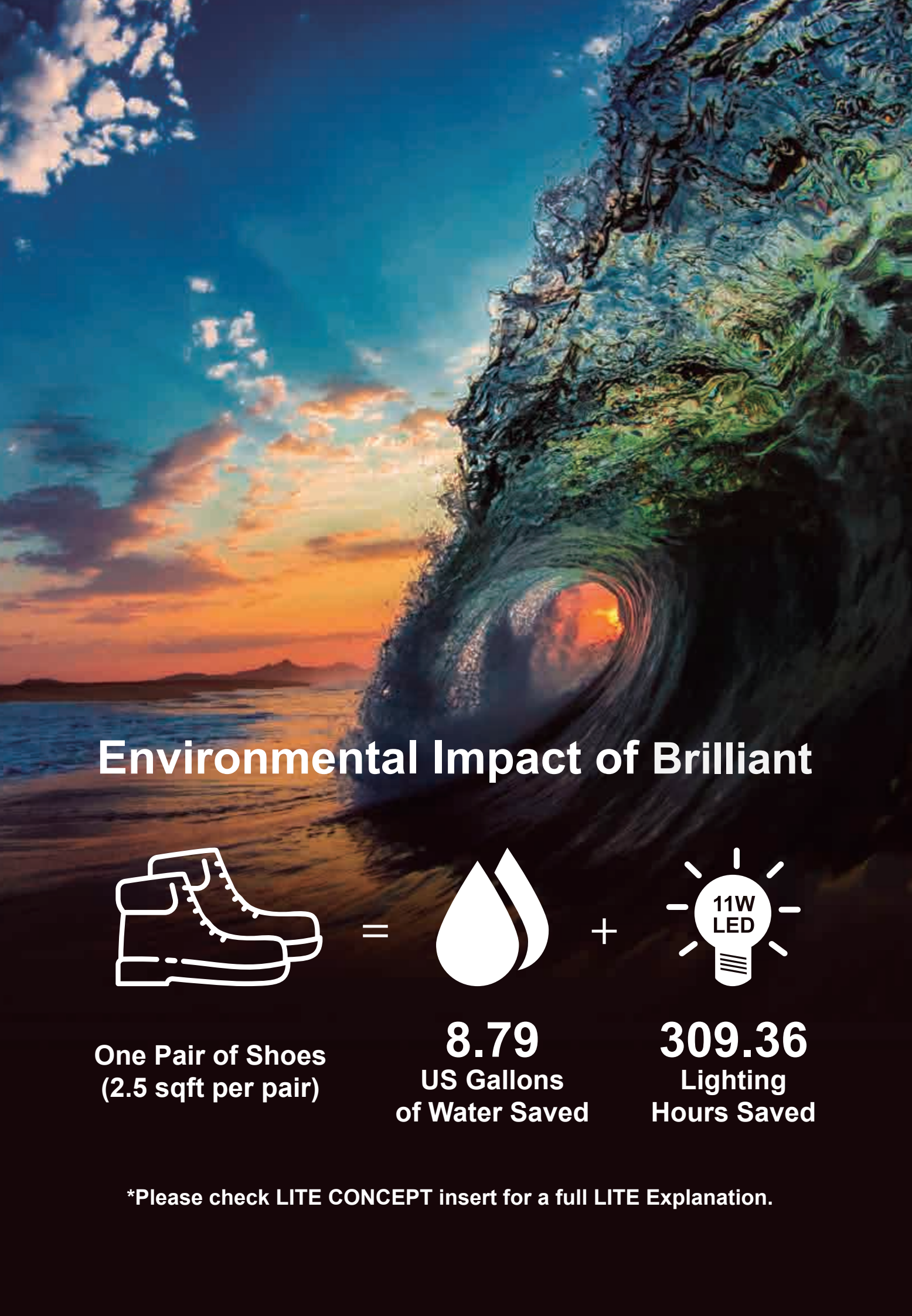
\*Please check LITE CONCEPT insert for a full LITE Explanation.

# Brilliant

Brilliant has a shimmery pearlized finish with a feminine softness and a refined grain character.



Temper	Color Range Available	Weight Range Available	Oil Content ± 2%	Milling Pattern
3.5 (+/- 0.5) @25mm	Light - Dark	1.0 - 1.4mm	10% (+/- 2%)	Medium
Waterproof <input type="checkbox"/> Non Waterproof <input checked="" type="checkbox"/>			Shoe Finishing Suggestion	
• Waterproof version could be developed.			No finishing needed.	



## Environmental Impact of Brilliant



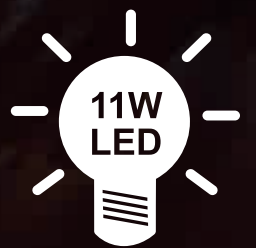
One Pair of Shoes  
(2.5 sqft per pair)

=



8.79  
US Gallons  
of Water Saved

+



309.36  
Lighting  
Hours Saved

\*Please check LITE CONCEPT insert for a full LITE Explanation.

# Chronicle

Crinkled, with a papery feel, CHRONICLE has extreme softness and burnishability. A requirement for short boot styles.



## Environmental Impact of Chronicle



One Pair of Shoes  
(2.5 sqft per pair)

=



**9.13**  
US Gallons  
of Water Saved

+



**324.69**  
Lighting  
Hours Saved

\*Please check LITE CONCEPT insert for a full LITE Explanation.

Temper	Color Range Available	Weight Range Available	Oil Content ± 2%	Milling Pattern
3.5 (+/- 0.5) @25mm	Light - Dark	1.0 - 1.4mm	10% (+/- 2%)	Heavy
Waterproof <input type="checkbox"/> Non Waterproof <input checked="" type="checkbox"/>			Shoe Finishing Suggestion	
• Waterproof version is not available.			Burnishable with crinkle effect. Leather has built in burning waxes, Brush with cotton wheel at 1,500RPM to darken the surface and add shine.	

# Maldova WP / Maldova 83 WP

A must have waterproof burnishable leather with light milling and a soft touch. Maldova WP / Maldova 83 WP is a great article for all casual footwear.



Temper	Color Range Available	Weight Range Available	Oil Content ± 2%	Milling Pattern
2.5 (+/- 0.5) @25mm	Medium - Dark	1.0 - 1.6mm	14% (+/- 2%)	Medium
Waterproof <input checked="" type="checkbox"/> Non Waterproof <input type="checkbox"/>			Shoe Finishing Suggestion	
<ul style="list-style-type: none"> <li>• Non waterproof version - Maldova / Maldova 83 is available.</li> <li>• Waterproof Spec: 15,000 Flexes. Absorption: 20% after 15,000 Flexes. Wicking: 10mm after 1 hour.</li> </ul>			Lightly milled, waxed leather. Leave as is or polish with cotton wheel to bring back the color.	

## Environmental Impact of Maldova WP / Maldova 83 WP



One Pair of Shoes  
(2.5 sqft per pair)

**8.85**  
US Gallons  
of Water Saved

**291.43**  
Lighting  
Hours Saved

\*Please check LITE CONCEPT insert for a full LITE Explanation.

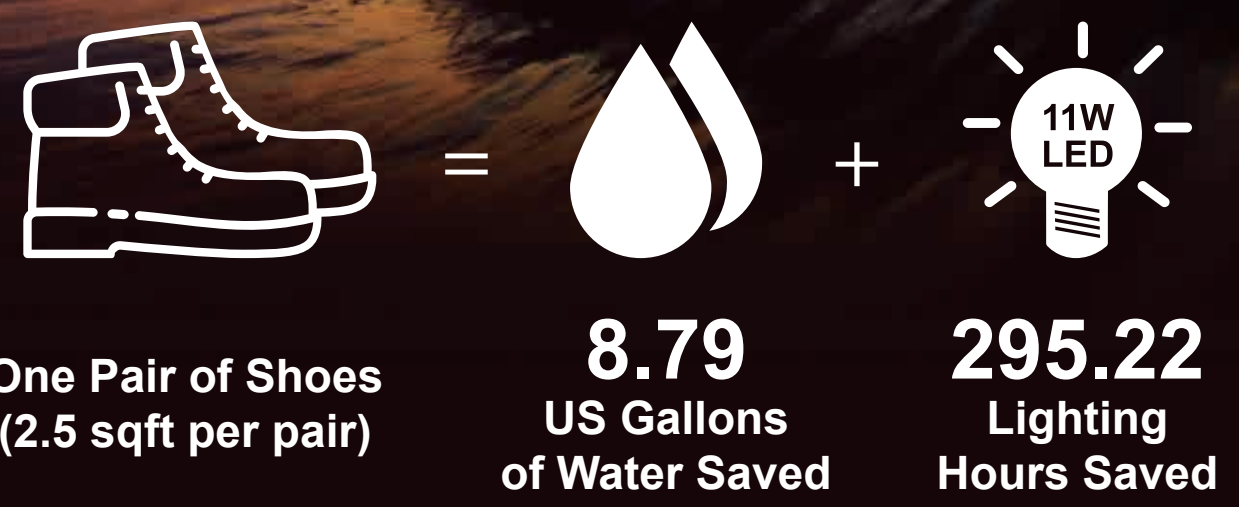
# Onice Soft 85

This slick, rubberized feel on leather will bring a sporty look to all casual footwear. A great option for raw edges and perfining. ONICE SOFT 85 is a must for smooth matte looks.



Temper	Color Range Available	Weight Range Available	Oil Content ± 2%	Milling Pattern
1.5 (+/- 0.5) @25mm	Light - Dark	1.0 - 1.6mm	10% (+/- 2%)	None
Waterproof <input type="checkbox"/> Non Waterproof <input checked="" type="checkbox"/>			Shoe Finishing Suggestion	
• Waterproof version is not available.			No finishing needed.	

## Environmental Impact of Onice Soft 85



\*Please check LITE CONCEPT insert for a full LITE Explanation.

# Plunge

An inspiration for cozy comfort, PLUNGE is a new, naturally milled full grain perfect for all styles where softness is important.

Summer Sunset

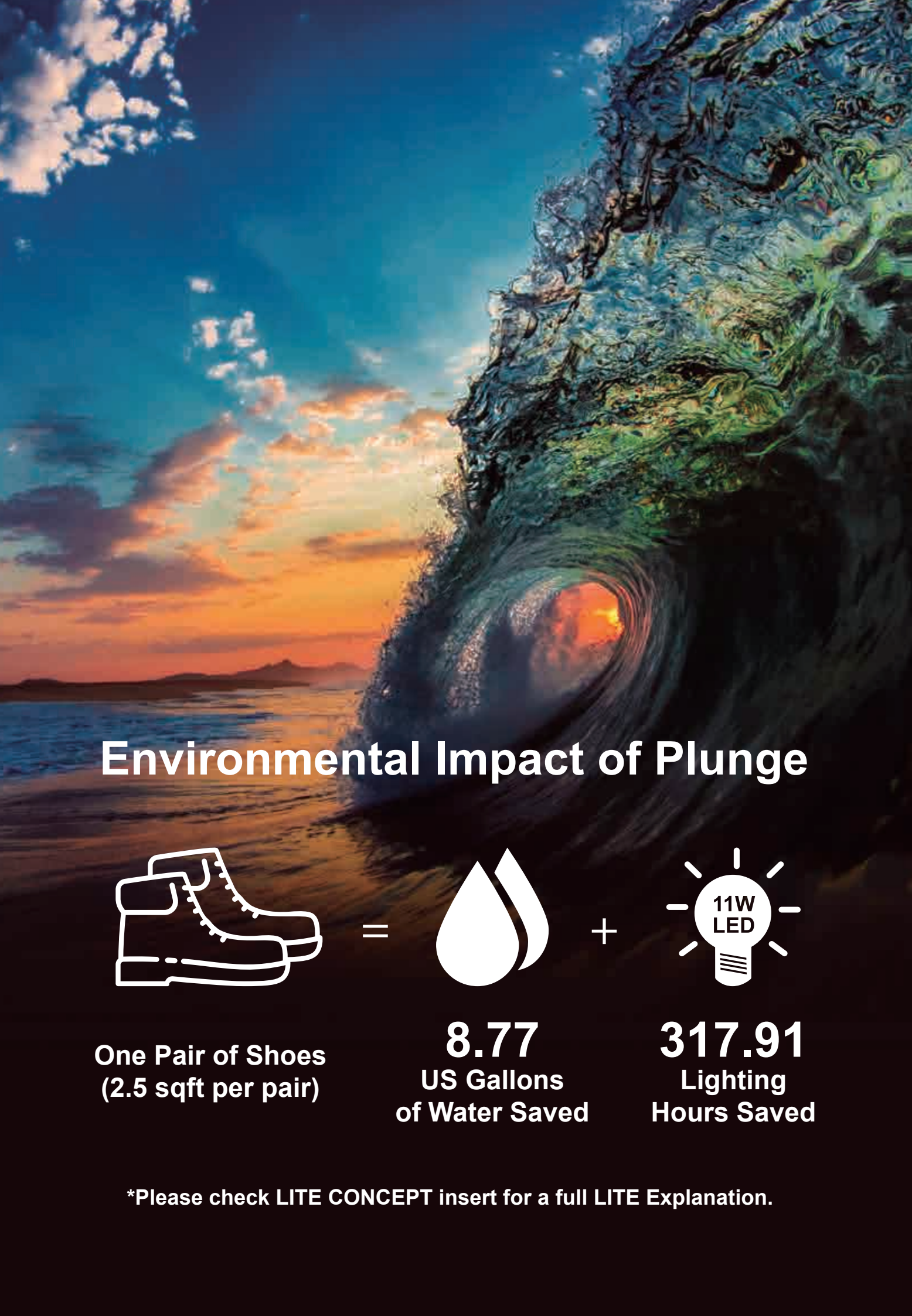
Coral Sands

Streamside

Dove

Loden Forest

Temper	Color Range Available	Weight Range Available	Oil Content ± 2%	Milling Pattern
4.0 (+/- 0.5) @25mm	Light - Dark	1.2 - 1.8mm	10% (+/- 2%)	Heavy
Waterproof <input type="checkbox"/> Non Waterproof <input checked="" type="checkbox"/>			Shoe Finishing Suggestion	
• Waterproof version - Plunge WP is available.			Leave as is or polish with cotton wheel to restore shine.	



## Environmental Impact of Plunge



One Pair of Shoes  
(2.5 sqft per pair)

=



8.77  
US Gallons  
of Water Saved

+



317.91  
Lighting  
Hours Saved

\*Please check LITE CONCEPT insert for a full LITE Explanation.

# Plush

A reverse or fleshout tannage, PLUSH has drapey softness in beautiful colors and "sueded" nap. A nice option for unlined slippers or moccasin styles.



Temper	Color Range Available	Weight Range Available	Oil Content ± 2%	Milling Pattern
1.2-1.6mm:4.0(+/-0.5)@25mm 1.6-2.0mm:3.5(+/-0.5)@25mm	Light - Dark	1.2 - 2.0mm	10% (+/- 2%)	Heavy (grain side)
Waterproof <input type="checkbox"/> Non Waterproof <input checked="" type="checkbox"/>		Shoe Finishing Suggestion		
• Waterproof version is not available.		No finishing needed.		



## Environmental Impact of Plush



=



+



One Pair of Shoes  
(2.5 sqft per pair)

**9.10**  
US Gallons  
of Water Saved

**317.02**  
Lighting  
Hours Saved

\*Please check LITE CONCEPT insert for a full LITE Explanation.

# Rejuvenate Washable

With its natural grain character and softly milled temper, REJUVENATE offers a full grain washable option.



**Fog**      **Streamside**

**Peacoat**      **Black**

**Red Rocks**

## Environmental Impact of Rejuvenate Washable



One Pair of Shoes  
(2.5 sqft per pair)

**8.64**  
US Gallons  
of Water Saved

**305.77**  
Lighting  
Hours Saved

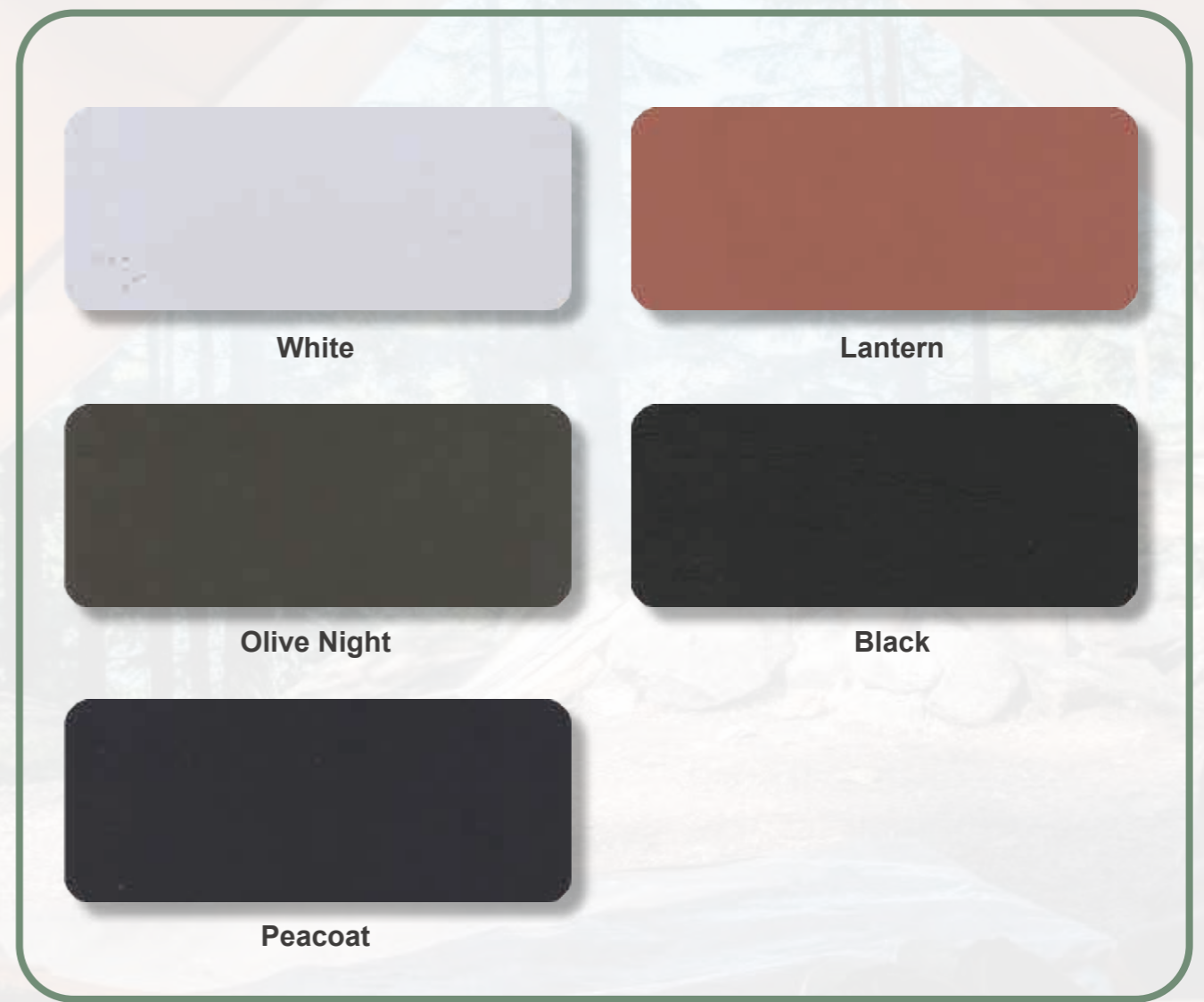
\*Please check LITE CONCEPT insert for a full LITE Explanation.

Temper	Color Range Available	Weight Range Available	Oil Content ± 2%	Milling Pattern
3.0 (+/- 0.5) @25mm	Light - Dark	1.2 - 1.6mm	10% (+/- 2%)	Heavy
Waterproof <input type="checkbox"/> Non Waterproof <input checked="" type="checkbox"/>			Shoe Finishing Suggestion	
• Waterproof version is not available.			No finishing needed.	



# Shaun

Shaun is an athletic inspired nappa leather with a soft hand and a talc-y surface feel.



Temper	Color Range Available	Weight Range Available	Oil Content ± 2%	Milling Pattern
3.5 (+/- 0.5) @25mm	Light - Dark	1.0 - 1.4mm	10% (+/- 2%)	Medium
Waterproof <input type="checkbox"/> Non Waterproof <input checked="" type="checkbox"/>			Shoe Finishing Suggestion	
• Waterproof version - Shaun WP is available.			No finishing needed.	

## Environmental Impact of Shaun



=



+



One Pair of Shoes  
(2.5 sqft per pair)

**8.79**  
US Gallons  
of Water Saved

**303.05**  
Lighting  
Hours Saved

\*Please check LITE CONCEPT insert for a full LITE Explanation.

# Soft Lagoon

Soft Lagoon has a bright, mirrored finish on a smooth, tight "box" type tannage.

Red Rocks

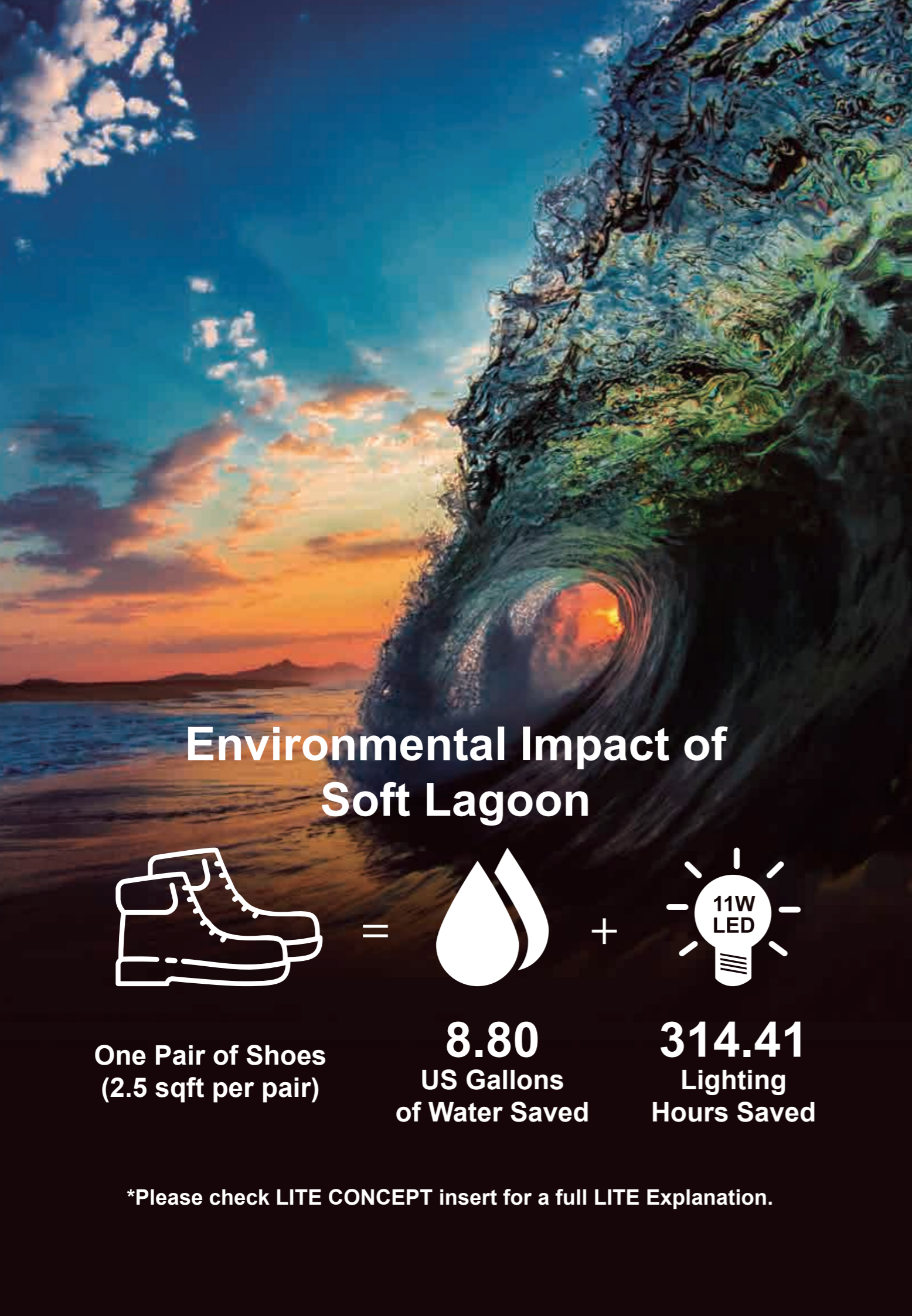
Loden Forest

Streamside

Charcoal Gray

Black

Temper	Color Range Available	Weight Range Available	Oil Content ± 2%	Milling Pattern
1.8 (+/- 0.5) @25mm	Light - Dark	1.0 - 1.4mm	10% (+/- 2%)	None
Waterproof <input checked="" type="checkbox"/> Non Waterproof <input type="checkbox"/>			Shoe Finishing Suggestion	
• Waterproof version is not available.			Polish for more brightness	



## Environmental Impact of Soft Lagoon



One Pair of Shoes  
(2.5 sqft per pair)

**8.80**  
US Gallons  
of Water Saved

**314.41**  
Lighting  
Hours Saved

\*Please check LITE CONCEPT insert for a full LITE Explanation.

# Ventress

A distressed look with a soft hand Ventress offers a vintage two toned look.



## Environmental Impact of Ventress



=



+



**One Pair of Shoes**  
(2.5 sqft per pair)

**8.79**  
US Gallons  
of Water Saved

**297.25**  
Lighting  
Hours Saved

\*Please check LITE CONCEPT insert for a full LITE Explanation.

Temper	Color Range Available	Weight Range Available	Oil Content ± 2%	Milling Pattern
3.0 (+/- 0.5) @25mm	Medium - Dark	1.0 - 1.4mm	10% (+/- 2%)	Light
Waterproof <input type="checkbox"/> Non Waterproof <input checked="" type="checkbox"/>			Shoe Finishing Suggestion	
• Waterproof version could be developed.			No finishing needed.	

## Molly Deboss #10

A new twist on the beautiful, soft tempered Molly tannage. The addition of a "dot" deboss brings a 3D look.



## Environmental Impact of Molly Deboss #10



One Pair of Shoes  
(2.5 sqft per pair)

=



8.77  
US Gallons  
of Water Saved

+



310.42  
Lighting  
Hours Saved

\*Please check LITE CONCEPT insert for a full LITE Explanation.

Temper	Color Range Available	Weight Range Available	Oil Content ± 2%	Milling Pattern
4.5 (+/- 0.5) @25mm	Light - Dark	0.8 - 1.1mm	10% (+/- 2%)	Light
Waterproof <input type="checkbox"/> Non Waterproof <input checked="" type="checkbox"/>			Shoe Finishing Suggestion	
• Waterproof version is not available.			No finishing needed.	

<b>London Forest 17-0210 TPG</b> <small>*Auburn Leather #753 Celedon Green</small>	
<b>Coral Sands 14-1224 TPG</b> <small>*Auburn Leather #600 VG Tan</small>	
<b>Summer Sunset 14-0847 TPG</b> <small>*Auburn Leather #304-78 Dandelion</small>	
<b>Streamside 17-3923 TPG</b> <small>*Auburn Leather #370 Moonlight Blue</small>	
<b>Fawn 17-1417 TPG</b> <small>*Auburn Leather #120-03 Cherokee Brown</small>	
<b>Lantern 16-1439</b> <small>*Auburn Leather #609 Natural</small>	
<b>Red Rocks 19-1652 TPG</b> <small>*Auburn Leather #675 Red Spur</small>	
<b>282-100 Black</b>	
<b>602 Charcoal Gray 18-0601 TPG</b>	
<b>Fog 13-0607 TPG</b> <small>*Auburn Leather #736 DT Birch</small>	
<b>Demitasse</b> <small>*Auburn leather #11Dk Coffee</small>	
<b>Brunette 19-1235 TPG</b> <small>*Auburn Leather #14 Chocolate</small>	
<b>606 Monk's Robe 18-1048 TPG</b>	
<b>608 Clove 18-1320 TPG</b>	
<b>Fossil</b> <small>*Auburn Leather #711 DT Fossil</small>	
<b>Starfish 16-1120 TPG</b> <small>*Auburn Leather #65 Tan</small>	
<b>Madder Brown 19-1331 TPG</b> <small>*Auburn Leather #729 DT Red</small>	
<b>Leather Brown 18-1142 TPG</b> <small>*Auburn Leather #30SH SH Tan</small>	
<b>Cashew 17-1137 TPG</b> <small>*Auburn Leather #62 Bulldog</small>	
<b>Natural</b> <small>*Auburn Leather #707 Thru Natural</small>	
<b>604 Peacoat 19-3920 TPG</b>	
<b>605 Olive Night 19-0515 TPG</b>	
<b>603 Dove</b>	

**“Multi-Color” Round**

740 Camo



722 Purple-Green-Blue



723 Orange-Red-Purple



**NEW! “Oiled” Round**

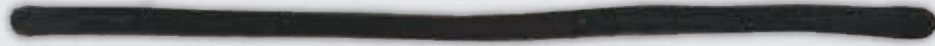
61 Oiled Desert Sand



19A Oiled Thru Rust



100 Oiled Black



**“Natural Waxed” Round**

61 Desert Sand



19A Thru Rust



100 Black



**“Smooth/Finished” Round**

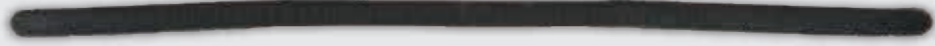
61 Desert Sand



19A Thru Rust



100 Black



**Pathfinder**

Economical, leather lace. Surface finishing reduces natural shade variance/cosmetic blemishes resulting in a more finished-looking lace. Great competitive price option for slippers, driver mocs and value collections.

**Classic**

The original full-grain leather BOAT SHOE lace for active, outdoor use. Aniline-dyed to retain the natural look of the leather. Engineered for function to deliver superior strength, suppleness and tie-ability.

**Classic Plus**

Classic Plus is our sealed version of Classic designed for suede, canvas or other non full-grain leather uppers, which demand improved crock resistance & color fastness to water.

**Muddy River**

Full grain leather lace with waxy surface. Mellow temper and supple hand provides a beautiful tied knot, ideally suited for athleisure/sneaker styles. Produced to match ISA Muddy River upper LITE leather tannage.

**Round**

Cylindrical-cut version of our Classic lace. Our traditional natural waxed finish. Finished round for smoother, slicker round option. Multi-color round for vivid, eye-catching color combinations. NEW! “Oiled” round, which provides a rich, oiled temper perfect for styles featuring full-grain leather uppers.

**Cougar**

Oil-tanned, full grain leather lace. Developed primarily for full-grain leather boots, with its all-weather durability and enhanced pull strength.

**Stay Dry**

Non-Wicking full grain leather lace. Designed for any and all outdoor footwear styles requiring non-wicking performance. Meets SATRA TM305 standard.

**Specialty Foil**

Laminated foil version of Classic leather lace available in bright metallics add a splash of character to any footwear style.

**ISA TanTec Ltd.**

Headquarters  
Avenida Da Praia Grande N 619  
Comercial Si Toi 5 Andar 8, 999078, Macau  
Tel: +853 2835 6320

**Mississippi TanTec Leather, Inc.**

101 TanTec Way,  
Vicksburg, MS 39183, USA  
Tel: +1 601 429 6081

**Saigon TanTec Leather Ltd.**

Lot M2-M3, Viet Huong 2 Industrial Park,  
An Tay Village, Ben Cat District,  
Binh Duong Province, Vietnam  
Tel: +84 274 357 9101/357 9102

**TransAsia TanTec Ltd.**

Lot B6.1, C4 Street,  
Thanh Thanh Cong Industrial Park, An Hoi Quarter,  
An Hoa Ward, Trang Bang Town,  
Tay Ninh Province, 840000 Vietnam  
Tel: +84 276 388 3382

**Heshan TanTec Leather Co., Ltd.**

No. 1 Xingli Road,  
Hecheng Town, Heshan City,  
Guangdong Province, 529727, China  
Tel: +86 750 831 3280 / 831 3294

Send us an email to [info@tantec1.com](mailto:info@tantec1.com)  
for inquiries.



The Brand  Behind The Brand

---

ISA INDUSTRIAL LTD. [WWW.LITELEATHER.COM](http://WWW.LITELEATHER.COM)  
MACAU (CHINA) | USA | VIETNAM | CHINA | HONG KONG (CHINA)

