

# ISA™


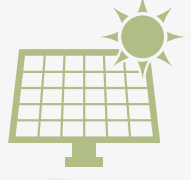




TanTec



## Spring / Summer 2024 Global Footwear Leather Collection

As a tannery, ISA TanTec is committed to conserve the environment and resources. Sustainability is an important part of ISA's identity. In 2003, ISA TanTec developed the **LITE** (Low Impact To the Environment) concept which defines a high standard of environmental sustainability in the manufacturing process.

### Lite Features



	<p><b>Bamboo Wall</b></p> <p>Rarely seen in traditional tanneries, the use of bamboo walls naturally ventilates the entire production facility with a constant breeze of fresh air to save air condition in hot geographic area.</p>
	<p><b>Solar System</b></p> <p>We make use of renewable solar thermal energy to replace diesel fuel, which is traditionally used to heat up water for the tanning process. Approx. 65% of hot water is heated with solar energy.</p>
	<p><b>Rain Lagoon</b></p> <p>To limit the impact on the local communities, we minimize the usage of municipal water by the collection of rainwater for production and greenery. Approx. 25,000 m<sup>3</sup> of rainwater is collected by our lagoon per year.</p>
	<p><b>Wind Energy</b></p> <p>We use wind energy to generate green energy which allows rainwater to be pumped from the lagoon into production.</p>
	<p><b>Natural Light</b></p> <p>Opaque light panels used in the ceiling of production floors to maximize the use of natural lighting during the day. During days without sunshine, LED light bulbs are used to illuminate the production floor. This saves more than approx. 2,600 production hours of lighting every year.</p>
	<p><b>Wetland</b></p> <p>Our engineered wetlands allow a natural purification process of our wastewater without generating emissions. Our treatment facilities are unique in the industry due to the amount of planning, innovation and investment involved. Each wetland is set up with an automated water level control system for optimal wastewater treatment.</p>

*Together We Save!*

## Environmental Impact



Compare the energy and water savings of ISA products when choosing leathers for adoption. The choice you make can positively influence the impact to the environment!

Article	US gallons of water saved 	HRS saved for lighting a 11W lamp 
Atlas	8.65	268.68
Breathe Easy WP SS	8.68	302.68
Cajun	9.69	309.88
Chronicle	9.31	335.09
Dimension	9.01	329.42
Groovy	9.69	320.91
Marquise	8.65	316.74
Mystic	9.25	309.33
Opal Brilliant	9.01	316.29
Plush	9.00	321.17
Reliable	9.66	309.01
Saddleback GP	9.06	303.21
Shazam Washable	8.86	319.79
Spectrum	9.69	316.79

The numbers are showing the lighting hours and water an article will save to make one pair of shoes (2.5 sqft of leather) comparing to the latest LWG Pass Score (50%) of 67.2 MJ/m<sup>2</sup> for energy consumption and 178L/m<sup>2</sup> for water consumption.

LWG (Leather Working Group), a multi-stakeholder group, develops and maintains a protocol that assesses the compliance and environmental performance of tanners, promotes and appreciates environmental business practices within the leather industry.





## CONTACT US

Ronda de Bie, Senior Vice President of Sales  
ronda@tantec1.com • +86-138-2235-9856

Keith Hill, Vice President Sustainable Business Development  
keith@tantec1.com • +1-414-731-3857

Peter Peng, Director of Sales China & Vietnam  
peter.peng@tantec1.com • +86-138-0254-8822

Gordon Wemmitt, US Sales Director  
gordon@tantec1.com • +1-510-759-9873

Steffen Weih, European Sales Manager  
steffen@tantec1.com • +49-170-527-7700

Jothi (JP) Prakasam, Sales Director – India & Bangladesh  
jp@tantec1.com • +91-896-200-2706

Selina Yang, MTL CS & Sales Administration  
selina@tantec1.com • +1-601-529-1636

Emily Satterthwaite, Account Manager  
emily@tantec1.com • +1-616-633-0338

Matthew Feuer, US Sales - The Leather Group  
matt@tantec1.com • +1-203-505-2074

Robert Hood, Canadian Sales - R.F. Hood Ltd.  
robert@rfhoodlimited.com • +1-416-293-6723

Tommy Tan, Asia Sales  
tommy.tan@tantec1.com • +86-137-9705-9313

David Ouyang, Asia Sales  
david-o@tantec1.com • +86-135-3902-5289

Bill Chen, Asia Sales  
bill@tantec1.com • +84-90-1208606

Seven Yang, Asia Sales  
seven@tantec1.com • +86-134-1300-0138

Tina Zhang, Asia Sales  
tina@tantec1.com • +86-134-1597-2030

Andy Yang, Asia Sales  
andy@tantec1.com • +86-138-2706-6675

Dan Zhao, Asia Sales  
dan@tantec1.com • +86-138-2802-1919

Poland Feng, Asia Sales  
poland@tantec1.com • +86-135-0901-5119

Javan Feng, Asia Sales  
javan@tantec1.com • +86-134-2260-8568

Mark Zhang, Asia Sales  
mark@tantec1.com • +86-138-2720-1324

Duncan Xu, Asia Sales  
duncan@tantec1.com • +86-135-0900-6350

Franky Mou, Commercialization Supervisor  
franky@tantec1.com • +86-139-2629-5081

Adam D. Simon, Director of Sales & Marketing,  
ISA Auburn Leather  
adam@tantec1.com • +1-404-991-0723

Arosia Yu, Director CS (US/CN/VN)  
arosia@tantec1.com • +86-138-2802-2722

Jany Phan, Vietnam CS  
jany@tantec1.com • +84-90-8061894

Gillian Tang, Director Marketing and Public Relations  
gillian@tantec1.com • +853-6263-0008

### ISA TanTec Ltd.

Headquarters  
Avenida Da Praia Grande N 619,  
Comercial Si Toi, 5 Andar 8, 999078, Macau, China  
Tel: + 853-2835-6320

### Mississippi TanTec Leather, Inc.

101 TanTec Way, Vicksburg, MS 39183, USA  
Tel: +1-601-429-6081

### Saigon TanTec Leather Ltd.

Lot M2-M3, Viet Huong 2 Industrial Park,  
An Tay Village, Ben Cat District,  
Binh Duong Province, Vietnam  
Tel: +84-274-357-9101 / 357-9102

### TransAsia TanTec Ltd.

Lot B6.1, C4, Thanh Thanh Cong IP,  
An Hoi Hamlet, An Hoa Ward, Trang Bang Town,  
Tay Ninh Province, 840000, Vietnam  
Tel: +84 276 388 3382

### Heshan TanTec Leather Co., Ltd.

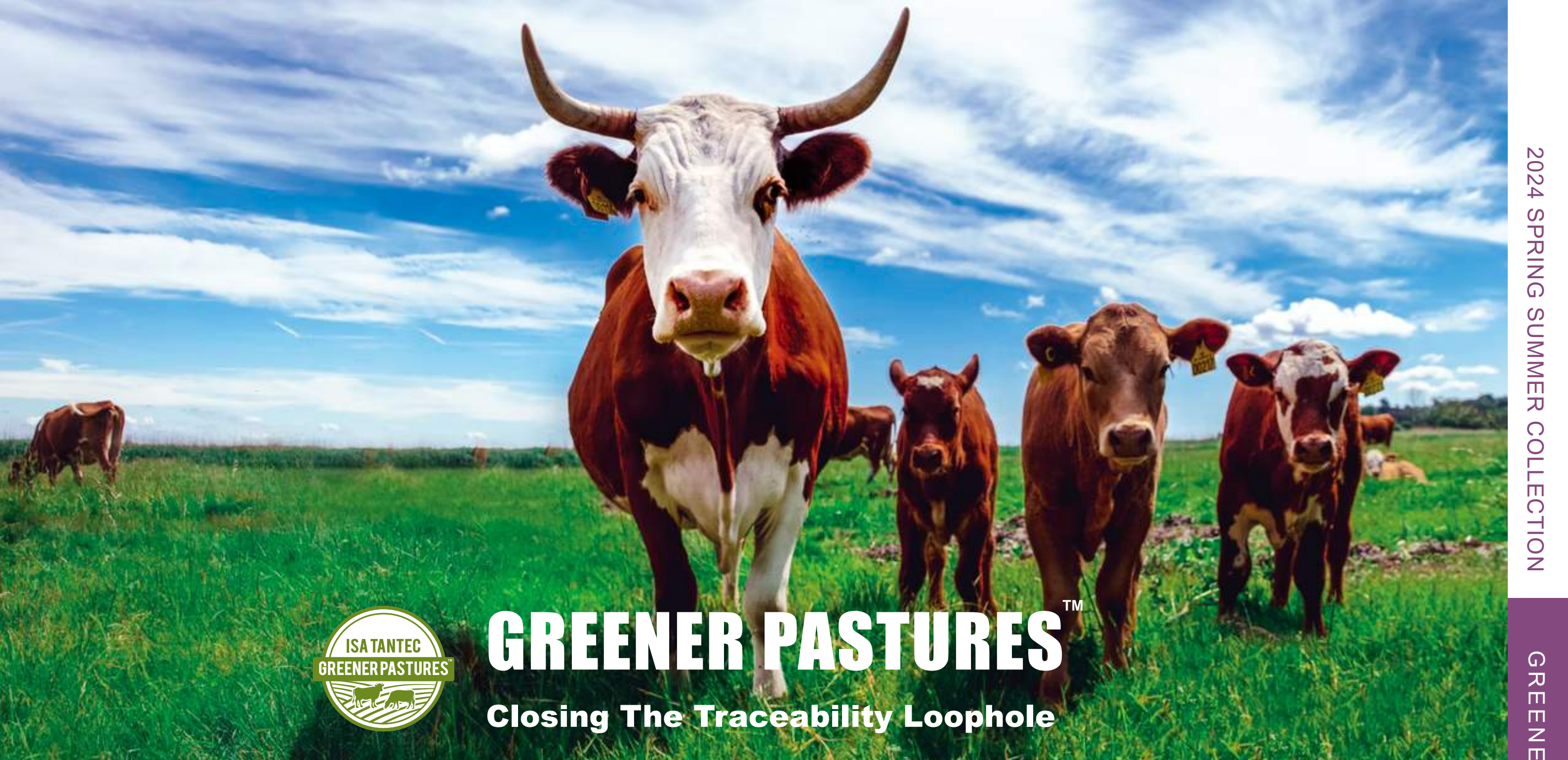
No. 1 Xingli Road,  
Hecheng Town, Heshan City,  
Guangdong Province, 529727, China  
Tel: +86-750-831-3280 / 831-3294



The Brand >< Behind The Brand







# GREENER PASTURES™

## Closing The Traceability Loophole

Hide Traceability

Beef Quality Assurance Certification

Beef Quality Assurance Transportation

USDA Humane Handling

No Antibiotics

No Steroids or Hormones

No Pest or Parasite Chemical Application

100% Vegetarian Diet



Ask your account manager for details.



The Brand < Behind The Brand





# Seasonal Color Palette



ISA

Fiery Red  
18-1664 TPG



ISA

Tangerine  
15-1247 TPG



ISA

Apple Green  
15-0543 TPG



ISA

Eggshell Blue  
14-4809 TPG



ISA

Mazarine Blue  
19-3864 TPG



ISA

Sparkling Grape  
19-3336 TPG

# Core Color Palette



ISA

Black



ISA

Charcoal Gray  
18-0601 TPG



ISA

Dove  
15-0000 TPG



ISA

Fossil  
17-0909 TPG



ISA

Starfish  
16-1120 TPG



ISA

Madder Brown  
19-1331 TPG



ISA

Fog  
13-0607 TPG



ISA

Natural



ISA

Demitasse  
19-0712 TPG



ISA

Leather Brown  
18-1142 TPG



ISA

Cashew  
17-1137 TPG



ISA

Peacoat  
19-3920 TPG



ISA

Brunette  
19-1235 TPG



ISA

Clove  
18-1320 TPG



ISA

Monk's Robe  
18-1048 TPG



ISA

Olive Night  
19-0515 TPG





# Atlas

PRODUCT FEATURES: ATLAS reminds you of tannages from a distant time. A classic look with sharp pull up from intense waxes is tough to beat.

Charcoal Gray 18-0601 TPG

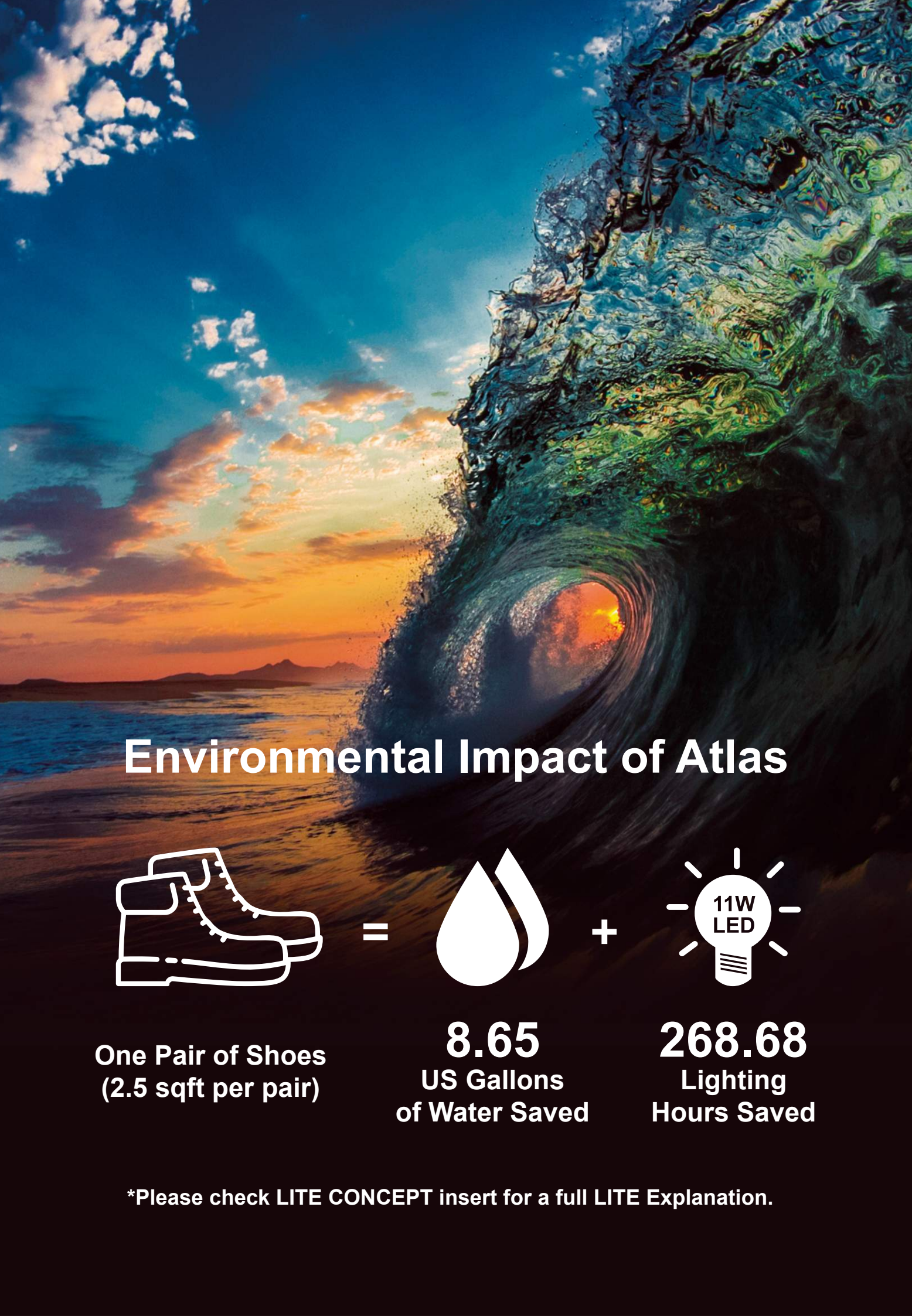
Fiery Red 18-1664 TPG

Leather Brown 18-1142 TPG

Mazarine Blue 19-3864 TPG

Sparkling Grape 19-3336 TPG

Temper	Color Range Available	Weight Range Available	Oil Content ± 2%	Milling Pattern
2.0 (+/- 0.5) @25mm	Medium - Dark	1.2 - 2.0mm	14%	None
Waterproof <input type="checkbox"/> Non Waterproof <input checked="" type="checkbox"/>			Shoe Finishing Suggestion	
• Waterproof version - <i>Abruzzo WP</i> is available.			Brush with cotton wheel to restore shine.	



## Environmental Impact of Atlas



=



+



One Pair of Shoes  
(2.5 sqft per pair)

**8.65**  
US Gallons  
of Water Saved

**268.68**  
Lighting  
Hours Saved

\*Please check LITE CONCEPT insert for a full LITE Explanation.





## Breathe Easy WP SS

PRODUCT FEATURES: A smooth, clean surface in a high performance leather. BREATHE EASY WP is a waterproof, breathable leather that dries quickly and also passes our Saline Solution spec. Truly, a high performance leather.

## Environmental Impact of Breathe Easy WP SS



=



+



One Pair of Shoes  
(2.5 sqft per pair)

**8.68**  
US Gallons  
of Water Saved

**302.68**  
Lighting  
Hours Saved

\*Please check LITE CONCEPT insert for a full LITE Explanation.

Temper	Color Range Available	Weight Range Available	Oil Content ± 2%	Milling Pattern
2.0 (+/- 0.5) @25mm	Medium - Dark	1.2 - 2.0mm	12%	None
Feature	Waterproof <input checked="" type="checkbox"/> Non Waterproof <input type="checkbox"/>		Shoe Finishing Suggestion	
Saline Solution	Waterproof Spec: 15,000 Flexes. Absorption: 20% after 15,000 Flexes. Wicking: 10mm after 1 hour. • Non waterproof version could be developed.		No finishing needed.	



# Cajun

PRODUCT FEATURES: CAJUN is a beautiful translation of sophistication and richness. The light pull up and sheen creates an unmatched depth of color.

**Brunette 19-1235 TPG**

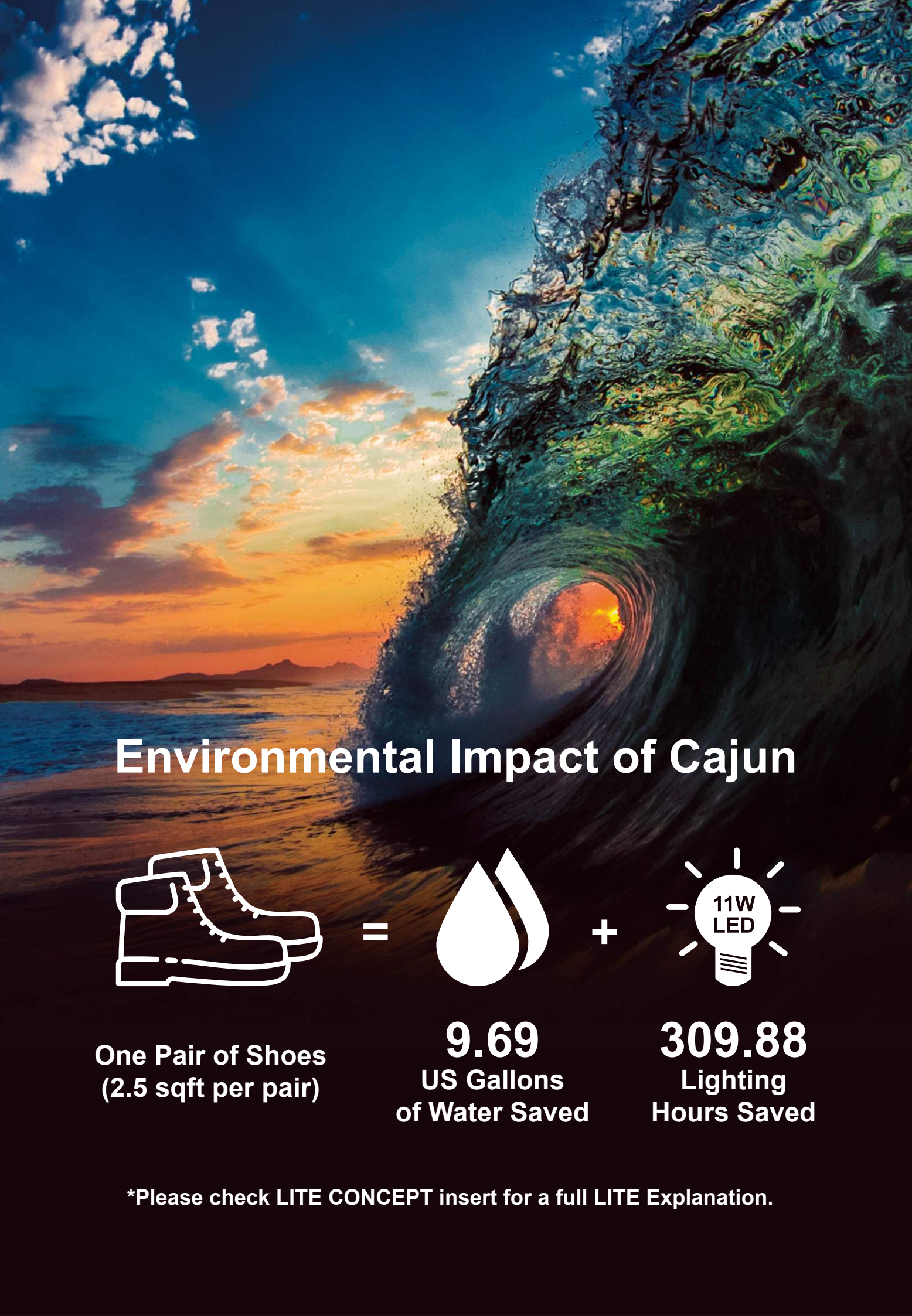
**Fossil 17-0909 TPG**

**Leather Brown 18-1142 TPG**

**Mazarine Blue 19-3864 TPG**

**Sparkling Grape 19-3336 TPG**

Temper	Color Range Available	Weight Range Available	Oil Content ± 2%	Milling Pattern
3.0 (+/- 0.5) @25mm	Medium - Dark	1.2 - 1.6mm	16%	Medium
Waterproof <input type="checkbox"/> Non Waterproof <input checked="" type="checkbox"/>			Shoe Finishing Suggestion	
• Waterproof version - <i>Cajun WP</i> is available.			Polish for more brightness.	



## Environmental Impact of Cajun



=



+



One Pair of Shoes  
(2.5 sqft per pair)

**9.69**  
US Gallons  
of Water Saved

**309.88**  
Lighting  
Hours Saved

\*Please check LITE CONCEPT insert for a full LITE Explanation.



# Chronicle

PRODUCT FEATURES: Crinkled, with a papery feel, CHRONICLE has extreme softness and burnishability. A requirement for short boot styles.



Temper	Color Range Available	Weight Range Available	Oil Content ± 2%	Milling Pattern
3.5 (+/- 0.5) @25mm	Light - Dark	1.0 - 1.4mm	10%	Heavy
Waterproof <input type="checkbox"/> Non Waterproof <input checked="" type="checkbox"/>			Shoe Finishing Suggestion	
• Waterproof version is not available.			Burnishable with crinkle effect. Leather has built in burning waxes, brush with cotton wheel at 1500RPM to darken the surface and add shine.	

## Environmental Impact of Chronicle



=



+



One Pair of Shoes  
(2.5 sqft per pair)

**9.31**  
US Gallons  
of Water Saved

**335.09**  
Lighting  
Hours Saved

\*Please check LITE CONCEPT insert for a full LITE Explanation.



## Dimension

PRODUCT FEATURES: A tannage with not only a soft temper, but a soft surface touch. The denim texture & color combination redefines stone washed.



Temper	Color Range Available	Weight Range Available	Oil Content ± 2%	Milling Pattern
4.0 (+/- 0.5) @25mm	Light - Medium	1.0 - 1.6mm	8%	Light
Waterproof <input type="checkbox"/> Non Waterproof <input checked="" type="checkbox"/>			Shoe Finishing Suggestion	
• Waterproof version is not available.			No finishing needed.	

## Environmental Impact of Dimension



=



+



One Pair of Shoes  
(2.5 sqft per pair)

**9.01**  
US Gallons  
of Water Saved

**329.42**  
Lighting  
Hours Saved

\*Please check LITE CONCEPT insert for a full LITE Explanation.



# Groovy

PRODUCT FEATURES: GROOVY has veg in the tannage, along with a scratch effect accentuated with a glazed top. With its soft temper it is suitable for all footwear.



## Environmental Impact of Groovy



=



+



One Pair of Shoes  
(2.5 sqft per pair)

9.69  
US Gallons  
of Water Saved

320.91  
Lighting  
Hours Saved

\*Please check LITE CONCEPT insert for a full LITE Explanation.

Temper	Color Range Available	Weight Range Available	Oil Content ± 2%	Milling Pattern
2.5 (+/- 0.5) @25mm	Medium - Dark	1.2 - 1.6mm	10%	Medium
Waterproof <input type="checkbox"/> Non Waterproof <input checked="" type="checkbox"/>			Shoe Finishing Suggestion	
• Waterproof version is not available.			No finishing needed.	



# Marquise

PRODUCT FEATURES: MARQUISE is a fun update on a smooth nubuck base. Use this micro perf emboss texture on all summer styles.



## Environmental Impact of Marquise



=



+



One Pair of Shoes  
(2.5 sqft per pair)

**8.65**  
US Gallons  
of Water Saved

**316.74**  
Lighting  
Hours Saved

\*Please check LITE CONCEPT insert for a full LITE Explanation.

Temper	Color Range Available	Weight Range Available	Oil Content ± 2%	Milling Pattern
4.0 (+/- 0.5) @25mm	Light - Dark	1.2 - 1.8mm	10%	Embossed & Milled
Waterproof <input type="checkbox"/> Non Waterproof <input checked="" type="checkbox"/>			Shoe Finishing Suggestion	
• Waterproof version could be develop.			No finishing needed.	

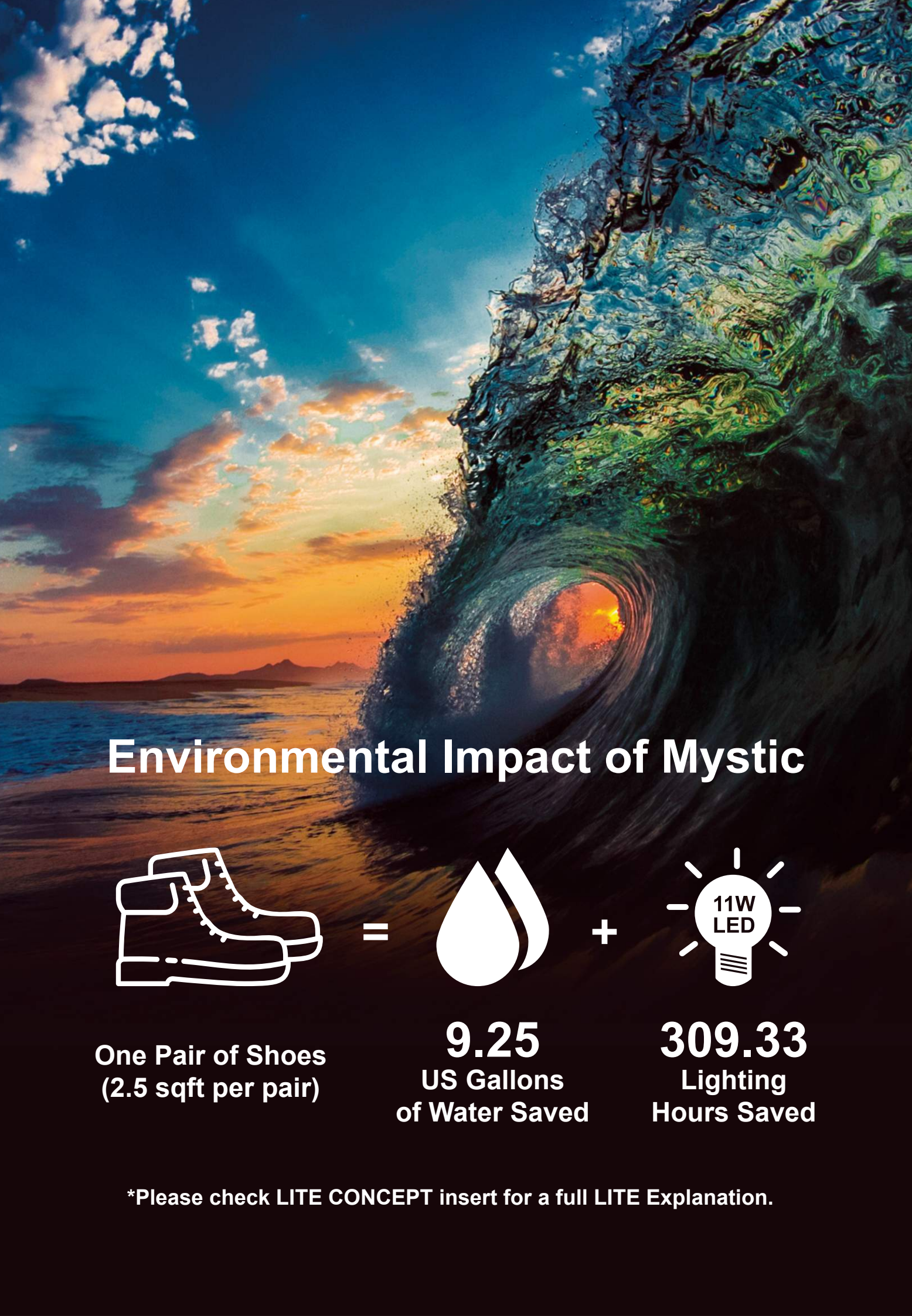


# Mystic

PRODUCT FEATURES: MYSTIC is a great leather for a spring summer season. The bright base tannage paired with a white crackle top is a fun twist for colorful sneakers.



Temper	Color Range Available	Weight Range Available	Oil Content ± 2%	Milling Pattern
3.0 (+/- 0.5) @25mm	Light - Dark	1.2 - 1.8mm	10%	Heavy
Waterproof <input type="checkbox"/> Non Waterproof <input checked="" type="checkbox"/>			Shoe Finishing Suggestion	
• Waterproof version is not available.			No finishing needed.	



## Environmental Impact of Mystic



=



+



One Pair of Shoes  
(2.5 sqft per pair)

**9.25**  
US Gallons  
of Water Saved

**309.33**  
Lighting  
Hours Saved

\*Please check LITE CONCEPT insert for a full LITE Explanation.

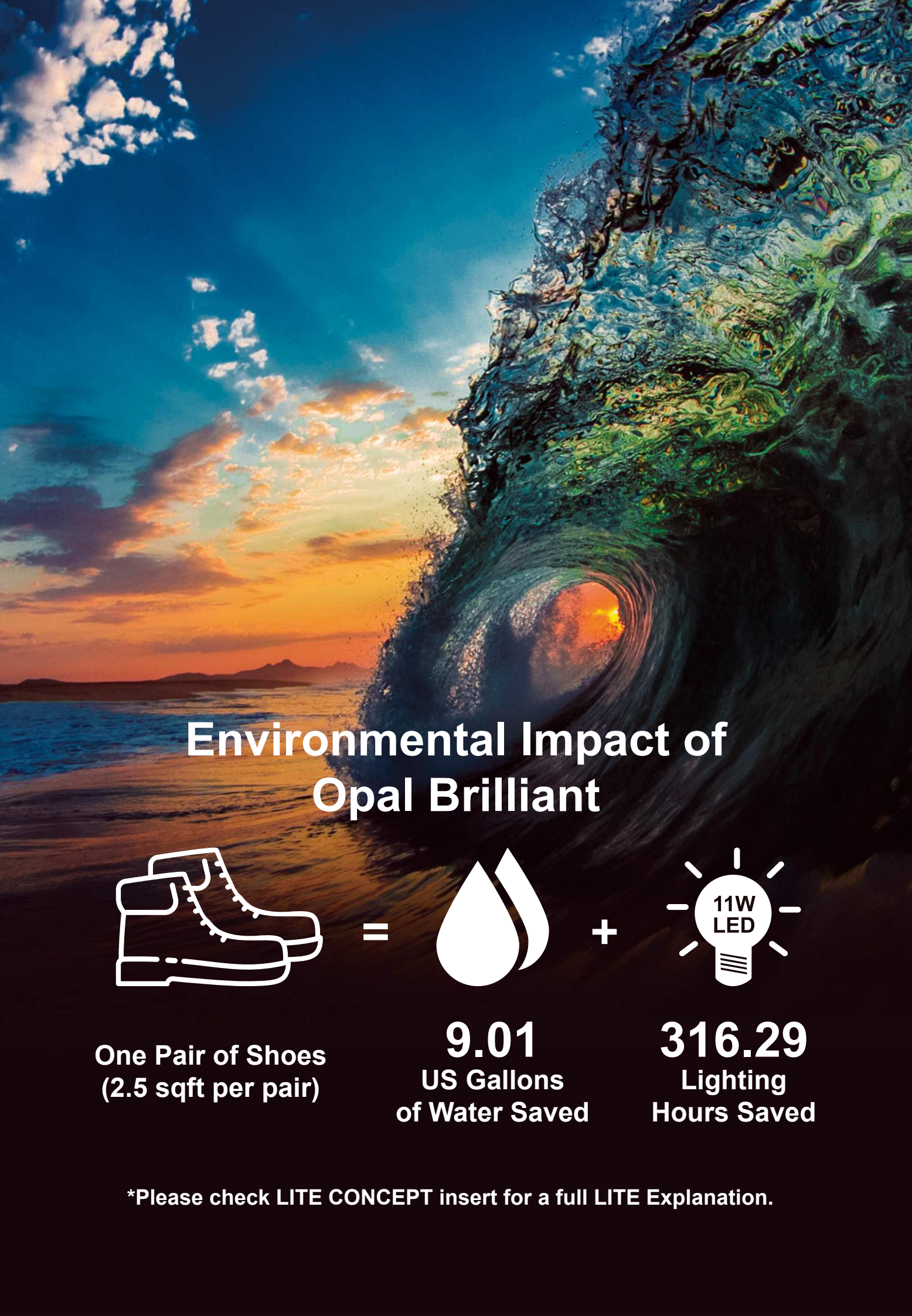


# Opal Brilliant

PRODUCT FEATURES: OPAL BRILLIANT takes our ever popular Brilliant metallic leather and adds a Saffiano emboss. A must have for sandal applications.



Temper	Color Range Available	Weight Range Available	Oil Content ± 2%	Milling Pattern
2.5 (+/- 0.5) @25mm	Light - Dark	1.2 - 1.4mm	10%	Embossed & Milled
Waterproof <input type="checkbox"/> Non Waterproof <input checked="" type="checkbox"/>			Shoe Finishing Suggestion	
• Waterproof version could be develop.			No finishing needed.	



## Environmental Impact of Opal Brilliant



=



+



One Pair of Shoes  
(2.5 sqft per pair)

**9.01**  
US Gallons  
of Water Saved

**316.29**  
Lighting  
Hours Saved

\*Please check LITE CONCEPT insert for a full LITE Explanation.



# Plush

PRODUCT FEATURES: A reverse or fleshout tannage, PLUSH has drapey softness in beautiful colors and "sueded" nap. A nice option for unlined slippers or moccasin styles.



Temper	Color Range Available	Weight Range Available	Oil Content ± 2%	Milling Pattern
3.0 (+/- 0.5) @25mm	Light - Dark	1.2 - 2.0mm	10%	Heavy (grain side)
Waterproof <input type="checkbox"/> Non Waterproof <input checked="" type="checkbox"/>			Shoe Finishing Suggestion	
• Waterproof version is not available.			Fleshout, no finishing needed.	

## Environmental Impact of Plush



=



+



One Pair of Shoes  
(2.5 sqft per pair)

**9.00**  
US Gallons  
of Water Saved

**321.17**  
Lighting  
Hours Saved

\*Please check LITE CONCEPT insert for a full LITE Explanation.

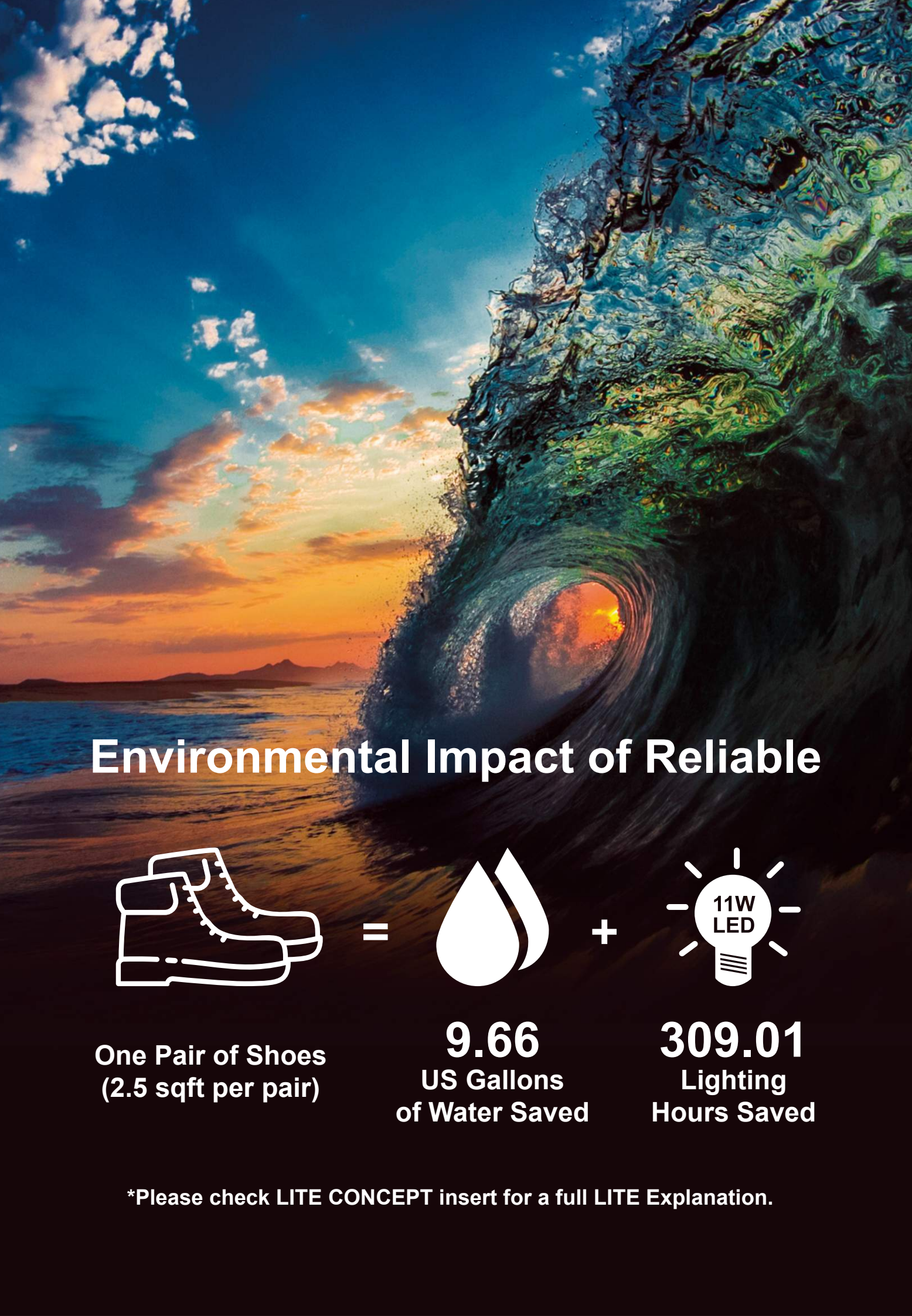


# Reliable

PRODUCT FEATURES: RELIABLE lives up to its name. This soft tempered, milled nappa type is competitively priced and lightly embossed for great uniformity.



Temper	Color Range Available	Weight Range Available	Oil Content ± 2%	Milling Pattern
3.0 (+/- 0.5) @25mm	Light - Dark	1.2 - 1.6mm	10%	Embossed & Milled
Waterproof <input type="checkbox"/> Non Waterproof <input checked="" type="checkbox"/>			Shoe Finishing Suggestion	
• Waterproof version could be develop.			No finishing needed.	



## Environmental Impact of Reliable



=



+



One Pair of Shoes  
(2.5 sqft per pair)

**9.66**  
US Gallons  
of Water Saved

**309.01**  
Lighting  
Hours Saved

\*Please check LITE CONCEPT insert for a full LITE Explanation.





# Saddleback GP

PRODUCT FEATURES: SADDLEBACK is a staple product from ISA. The right option for all outdoor, work and rugged footwear needs. Now part of the Greener Pastures™ Collection!



Cashew 17-1137 TPG



Clove 18-1320 TPG



Demitasse 19-0712 TPG

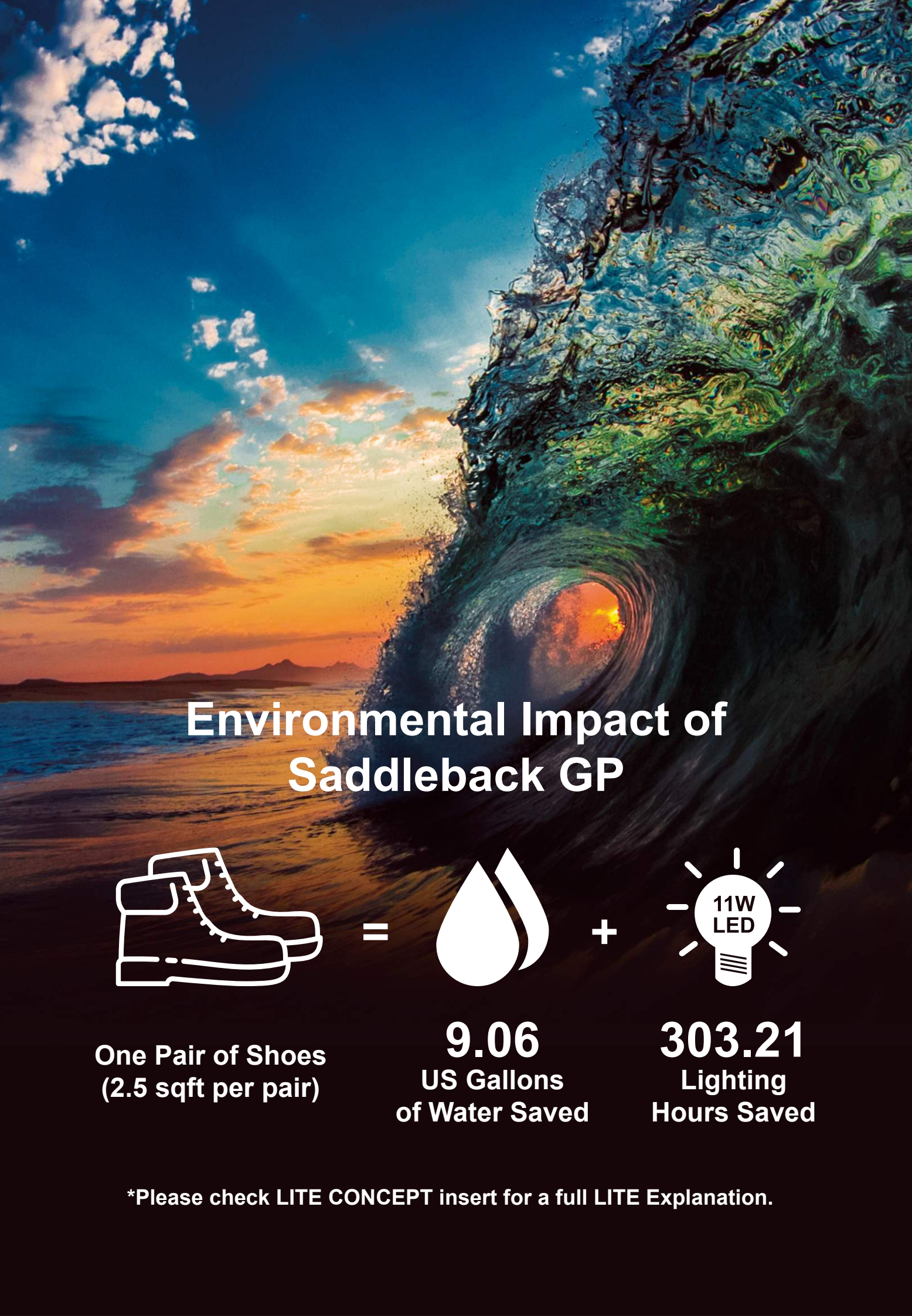


Mazarine Blue 19-3864 TPG



Starfish 16-1120 TPG

Temper	Color Range Available	Weight Range Available	Oil Content ± 2%	Milling Pattern
2.0 (+/- 0.5) @25mm	Medium - Dark	1.2 - 2.2mm	16%	None
Waterproof <input type="checkbox"/> Non Waterproof <input checked="" type="checkbox"/>			Shoe Finishing Suggestion	
• Waterproof version - <i>Saddleback WP GP</i> is available.			Restore oiled surface with preferred spray.	



## Environmental Impact of Saddleback GP



=



+



One Pair of Shoes  
(2.5 sqft per pair)

**9.06**  
US Gallons  
of Water Saved

**303.21**  
Lighting  
Hours Saved

\*Please check LITE CONCEPT insert for a full LITE Explanation.



## Shazam Washable

PRODUCT FEATURES: SHAZAM is a washable version of our famous leather Shaun. An athletic inspired nappa with a soft hand and a talcy surface feel. All colors are available.



Apple Green 15-0543 TPG

Eggshell Blue 14-4809 TPG

Sparkling Grape 19-3336 TPG

Tangerine 15-1247 TPG

White

## Environmental Impact of Shazam Washable



=



+



One Pair of Shoes  
(2.5 sqft per pair)

**8.86**  
US Gallons  
of Water Saved

**319.79**  
Lighting  
Hours Saved

\*Please check LITE CONCEPT insert for a full LITE Explanation.

Temper	Color Range Available	Weight Range Available	Oil Content ± 2%	Milling Pattern
3.5 (+/- 0.5) @25mm	Light - Dark	1.0 - 1.4mm	10%	Medium
Waterproof <input type="checkbox"/> Non Waterproof <input checked="" type="checkbox"/>			Shoe Finishing Suggestion	
• Waterproof version is not available.			No finishing needed.	



# Spectrum

PRODUCT FEATURES: ISA's option for a "crinkel patent" look. SPECTRUM offers a soft, milled pebble combined with a bright "wet" shine look.



## Environmental Impact of Spectrum



=



+



One Pair of Shoes  
(2.5 sqft per pair)

**9.69**  
US Gallons  
of Water Saved

**316.79**  
Lighting  
Hours Saved

\*Please check LITE CONCEPT insert for a full LITE Explanation.

Temper	Color Range Available	Weight Range Available	Oil Content ± 2%	Milling Pattern
3.0 (+/- 0.5) @25mm	Light - Dark	1.2 - 1.6mm	10%	Medium
Waterproof <input type="checkbox"/> Non Waterproof <input checked="" type="checkbox"/>			Shoe Finishing Suggestion	
• Waterproof version is not available.			No finishing needed.	



# Auburn Lace: Virtual Color Palette



A Division of ISA TanTec Group



**Scan for Virtual Color Palette**



Our new virtual color palette includes a high resolution photo of the lace, our Auburn color name/code and the corresponding pantone number. We hope this makes your spec writing process even easier.



# How to Spec an Auburn Lace.



## 1 Select Your Lace

Classic  
Classic Plus  
Round  
Multi Colored Round  
Foil

## 2 Select Width

(side to side measurement)

Men's Standard: 3.6mm  
Women's Standard: 3.2mm  
Kid's Standard: 2.8mm  
Round Functional Standard: 3.2mm

## 3 Select Thickness

(top to bottom measurement)

Men's Functional: 3.2mm  
Women's Functional: 2.8mm  
Children's Functional: 2.4mm

*\*all functional measurements (+/- .2mm)*

## 4 Select Length

Laces are cut by the inch.  
Available from 8"-108"

## 5 Select Color

Please select an "active" color from our latest virtual lace color palette.



\*For new color development, refer to our MOQ policy.

## 6 Get Your Price

All laces are priced width x length (diameter x length for Round Lace).

Your ISA Account Manager will be happy to assist you with pricing.



**ISA TanTec Ltd.**

Headquarters  
Avenida Da Praia Grande N 619  
Comercial Si Toi 5 Andar 8, 999078, Macau, China  
Tel: +853 2835 6320

**Mississippi TanTec Leather, Inc.**

101 TanTec Way,  
Vicksburg, MS 39183, USA  
Tel: +1 601 429 6081

**Saigon TanTec Leather Ltd.**

Lot M2-M3, Viet Huong 2 Industrial Park,  
An Tay Village, Ben Cat District,  
Binh Duong Province, Vietnam  
Tel: +84 274 357 9101/357 9102

**TransAsia TanTec Ltd.**

Lot B6.1, C4 Street,  
Thanh Thanh Cong Industrial Park, An Hoi Quarter,  
An Hoa Ward, Trang Bang Town,  
Tay Ninh Province, 840000 Vietnam  
Tel: +84 276 388 3382

**Heshan TanTec Leather Co., Ltd.**

No. 1 Xingli Road,  
Hecheng Town, Heshan City,  
Guangdong Province, 529727, China  
Tel: +86 750 831 3280 / 831 3294

Send us an email to [info@tantec1.com](mailto:info@tantec1.com)  
for inquiries.



The Brand > Behind The Brand

---

ISA INDUSTRIAL LTD. [WWW.LITELEATHER.COM](http://WWW.LITELEATHER.COM)  
MACAU (CHINA) | USA | VIETNAM | CHINA | HONG KONG (CHINA)

