

# Luxury AW2022 Collection





AW 2022 Seasonal Color Palette

Blue Gene

Grape Wine

Flux

Olive

Mainframe

Quantum



AW 2022 Seasonal Color Palette

Black

Fog

Brunette

Fossil

Natural

Leather Brown

Dove

# APLITE

A pebble embossed leather with a soft & spongy body. Aplite has a slight aniline look that imitates a heavy shrunken article. Suitable for all kinds of constructions, except sharp corners.

Thickness: 1.46mm

Selection: A/B/C = 30/40/30

Type: Embossed, Milled, Pebble

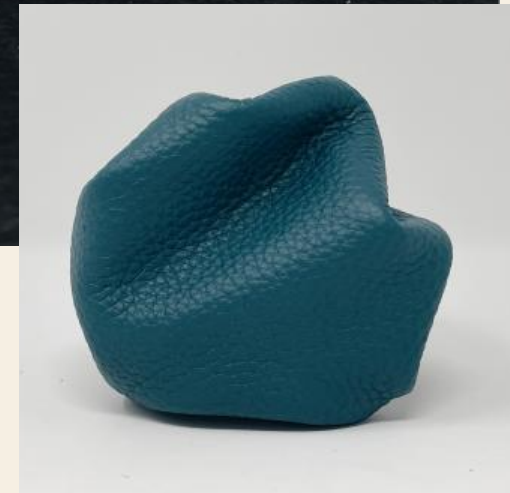
Softness: Soft

Crocking: Dry-3 / Wet-3

LITE Water Savings: 3.35 gallons

LITE Energy Savings: 105.34 lighting hours

*\*per 1 sqf of leather*



AUTUMN WINTER 2022

# APLITE



# RAFFAELLO

A soft nappa leather with a tiny pebble emboss. Raffaello Brilliant is available with a beautiful metallic finish. Raffaello is suitable for all kinds of constructions except sharp corners.

Thickness: 1.35mm

Selection: A/B/C = 30/40/30

Type: Embossed, Milled, Nappa

Softness: Soft

Crocking: Dry-3 / Wet-3

LITE Water Savings: 3.65 gallons

LITE Energy Savings: 119.06 lighting hours

*\*per 1 sqf of leather*



AUTUMN WINTER 2022

# RAFFAELLO



# ASTER

A milled leather with an emboss inspired by heavy, shrunken grain looks. Suitable for all kinds of constructions, except sharp corners.

Thickness: 1.46mm

Selection: A/B/C = 30/40/30

Type: Embossed, Milled, Pebble

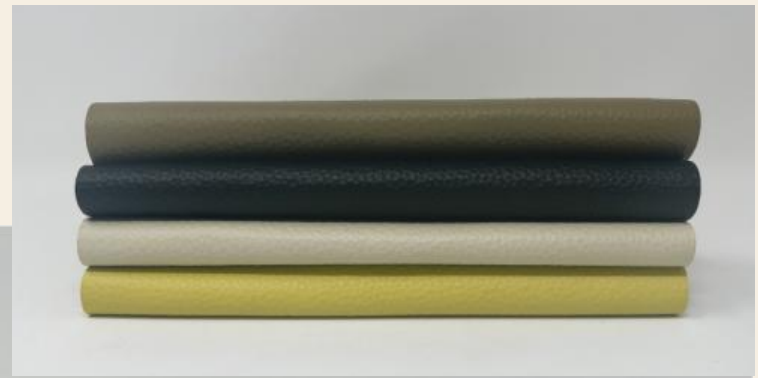
Softness: Soft

Crocking: Dry-3 / Wet-3

LITE Water Savings: 3.51 gallons

LITE Energy Savings: 110.36 lighting hours

*\*per 1 sqf of leather*



AUTUMN WINTER 2022



# ASTER



# PEONY

A light weight, smooth leather with a rubberized touch. Peony is recommended for constructive bags and is not suitable for tubular handles, straps underneath or turned constructions.



Thickness: 1.02mm  
Selection: A/B/C = 40/40/20  
Type: Rubberized Box  
Softness: Medium  
Croaking: Dry-3 / Wet-3  
LITE Water Savings: 3.52 gallons  
LITE Energy Savings: 117.94 lighting hours

*\*per 1 sqf of leather*



# PEONY



AUTUMN WINTER 2022

# GIVERNY SOFT

A semi-veg smooth leather with a semi-aniline look. Giverny Soft is recommended for constructive bags. It is not suitable for tubular handles, straps underneath or turned constructions.

Thickness: 1.46mm

Selection: A/B/C = 10/50/40

Type: Semi-Veg, Smooth

Softness: Medium

Crocking: Dry-3 / Wet-2

LITE Water Savings: 3.52 gallons

LITE Energy Savings: 114.08 lighting hours

*\*per 1 sqf of leather*



AUTUMN WINTER 2022



# GIVERNY SOFT

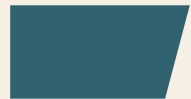


# CAJUN RB

A naturally milled leather with an oiled/waxed finish. Cajun RB has an antiqued, classic look for a variety of leather goods. Available in medium to dark colors. Cajun RB is suitable for all types of constructions, except sharp corners.

Thickness: 1.46mm  
Selection: B/C/D = 30/40/30  
Type: Aniline, Naturally Milled  
Softness: Soft  
Crocking: Dry-3 / Wet-2  
LITE Water Savings: 3.72 gallons  
LITE Energy Savings: 113.40 lighting hours

*\*per 1 sqf of leather*



AUTUMN WINTER 2022



# CAJUN RB



# SONOMA

Sonoma is a softly milled nappa leather. It is suitable for all types of constructions except sharp corners.

Thickness: 1.24mm

Selection: TR1 (A+B=70)/C=30

Type: Milled Nappa

Softness: Soft

Crocking: Dry-3 / Wet-2

LITE Water Savings: 3.33 gallons

LITE Energy Savings: 118.59 lighting hours

*\*per 1 sqf of leather*



AUTUMN WINTER 2022



# SONOMA



# MOLLY NAT

Molly Nat is a light weight, soft nappa leather. It is recommended for quilting applications.



Thickness: 0.81mm  
Selection: TR1 (A+B=70)/C=30  
Type: Light Weight Nappa  
Softness: Soft  
Croaking: Dry-3 / Wet-2  
LITE Water Savings: 3.52 gallons  
LITE Energy Savings: 122.28 lighting hours  
*\*per 1 sqf of leather*



# MOLLY NAT



# IRIS

Iris has an irregular texture (#76) embossed on a nappa tannage. Iris has a 2-toned tipped effect. It is suitable for all types of constructions, except sharp corners.



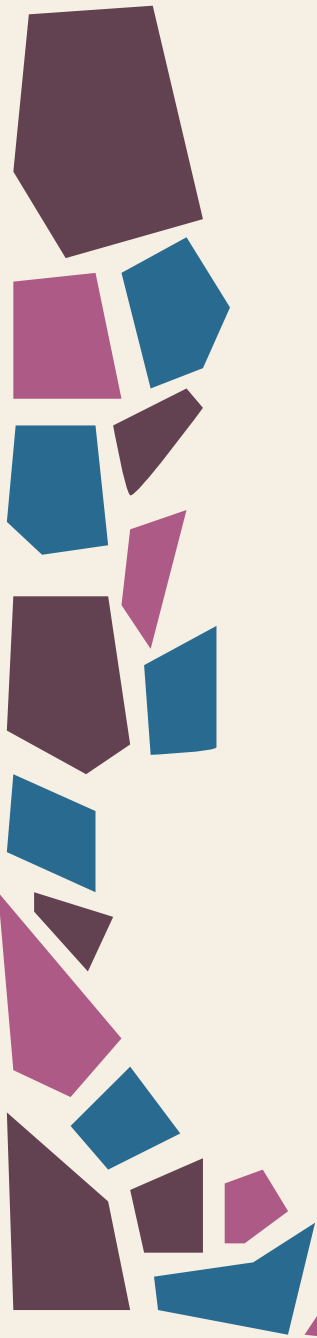
Thickness: 1.13mm  
Selection: A/B/C = 40/40/20  
Type: Embossed with Tipping  
Softness: Soft  
Croaking: Dry-3 / Wet-2  
LITE Water Savings: 3.52 gallons  
LITE Energy Savings: 112.22 lighting hours

*\*per 1 sqf of leather*



AUTUMN WINTER 2022

# IRIS



# LYS

Lys has an irregular texture (#73) embossed on a nappa type tannage. Lys has a 2-toned tipped effect. It is suitable for all types of constructions, except sharp corners.



Thickness: 1.13mm  
Selection: A/B/C = 40/40/20  
Type: Embossed with Tipping  
Softness: Soft  
Croaking: Dry-3 / Wet-2  
LITE Water Savings: 3.52 gallons  
LITE Energy Savings: 112.22 lighting hours

*\*per 1 sqf of leather*



AUTUMN WINTER 2022

LYS



# VEGA

Vega is a perfect leather for an all-over digital print. Custom patterns and prints are welcome. recommended for constructive bags.

Thickness: 1.46mm

Selection: A/B/C = 10/50/40

Type: Digitally Printed

Softness: Medium

Crocking: Dry-3 / Wet-2

LITE Water Savings: 3.52 gallons

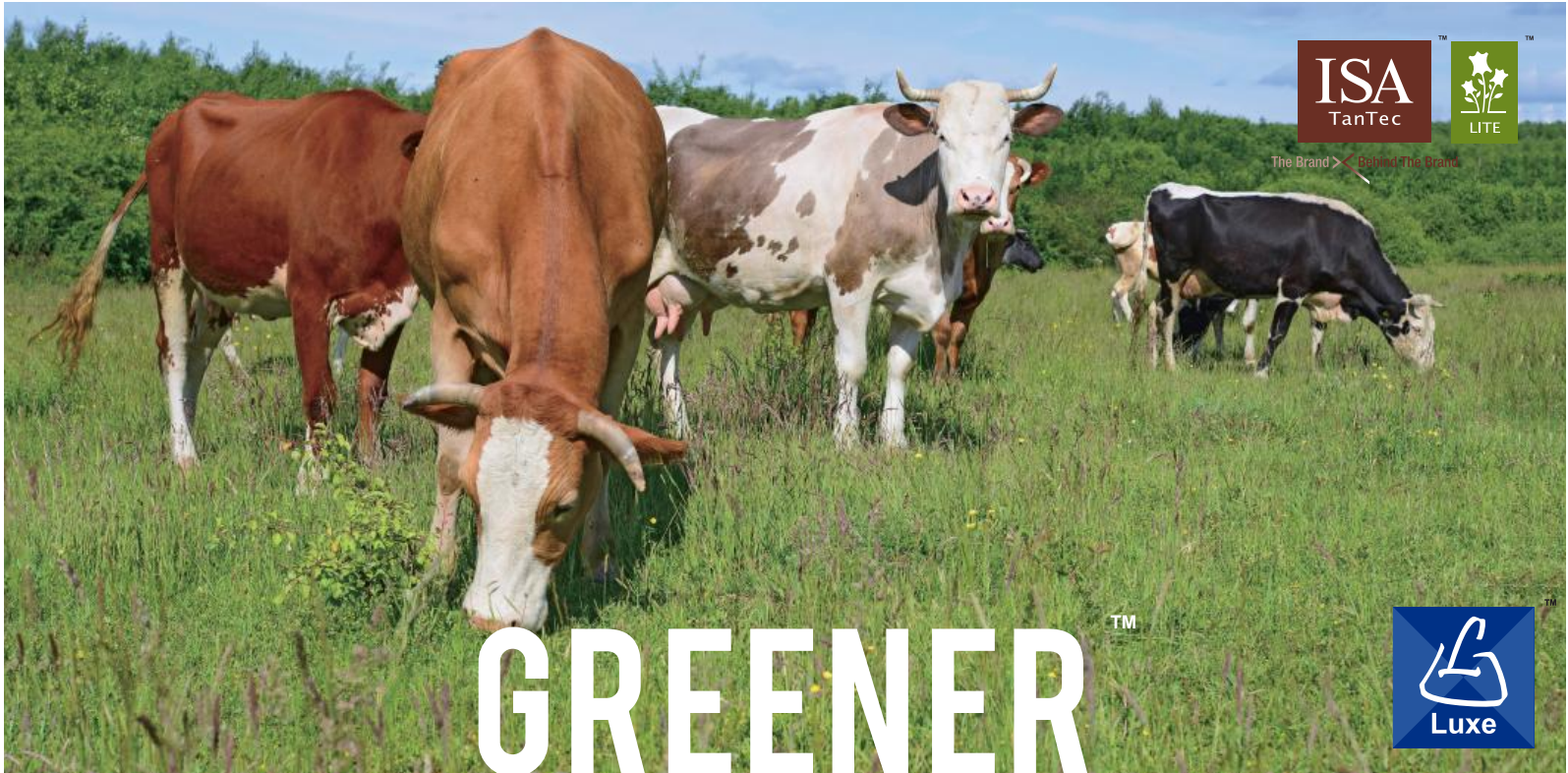
LITE Energy Savings: 114.30 lighting hours

*\*per 1 sqf of leather*



AUTUMN WINTER 2022





# GREENER<sup>TM</sup> PASTURES

**Traceability & Animal Welfare**

***Greener Pastures<sup>TM</sup> Collection Ordering Information:***

- Below articles available in all colors
- TR1 Grading
- Price premium
- 2,500 sf MOQ

Molly Nat GP



Natural

Raffaello GP



Flux

## LITE Sourcing

Driven by our LITE philosophy, we are elevating the management of our supply chain from sourcing raw material, strictly managing chemicals for production, to reducing water, energy and chemical usage during the manufacturing processes. We are pleased to announce our LITE Sourcing program which is focused on the sustainable use of natural resources, transparency in our supply chain, and the fair and ethical treatment of animals. By implementing more responsible sourcing practices in our facilities, together with our suppliers, we can bring a positive social and environmental impact to the communities with which we work. This also allows our customers to ensure their leather sourcing adheres to the highest standard of animal welfare, ethical and environmentally sustainable practices.



Our **Greener Pastures™** protocol, as a part of LITE Sourcing, has been specifically developed for cattle hides meeting following requirements:

- All hides in the program are traceable to the farm or ranch by lot with full transparency and documentation and must meet specific animal welfare program requirements such as BQA and BQAT
- Responsible animal welfare based upon USDA Humane Handling program protocols
- Raised with no added hormones or antibiotics
- Animals are fed a 100% vegetarian diet without animal by products



## Contact Us

---

Pascale Tahlaiti

Vice President of Sales Luxury & TrimTec

E: [pascale@tantec1.com](mailto:pascale@tantec1.com)

M: +86 138 2802 2253

Shawn Chen

Admin Sales

E: [shawn@tantec1.com](mailto:shawn@tantec1.com)

M: +86 137 5154 8600

Matthew Feuer

US Sales (East Coast)

E: [matt@tantec1.com](mailto:matt@tantec1.com)

M: +1 203 505 2074

Steffen Weih

European Sales Manager

E: [steffen@tantec1.com](mailto:steffen@tantec1.com)

M: +49 170 527 7700

Moon Pham

Vietnam Sales Manager

E: [moon@tantec1.com](mailto:moon@tantec1.com)

M: + 84 974 150 589

Jothi Prakasam

Sales Director for India & Bangladesh

E: [jp@tantec1.com](mailto:jp@tantec1.com)

M: +91 896 200 2706