

Mississippi TanTec Leather, Inc.

101 TanTec Way,
Vicksburg, MS 39183, USA
Tel: +1 601 429 6081

Saigon TanTec Leather Ltd.

Lot M2-M3, Viet Huong 2 Industrial Park,
An Tay Village, Ben Cat District,
Binh Duong Province, Vietnam
Tel: +84 274 357 9101/357 9102

Heshan TanTec Leather Co., Ltd.

No. 1 Xingli Road,
Hecheng Town, Heshan City,
Guangdong Province, 529727, China
Tel: +86 750 831 3280 / 831 3294

Scamosceria del Brenta srl

Via Pre' 42,
36061 Bassano del Grappa (Vicenza), Italy
Tel: +39 (0) 424 568124 r.a.

Send us an email to info@tantec1.com
for inquiries.



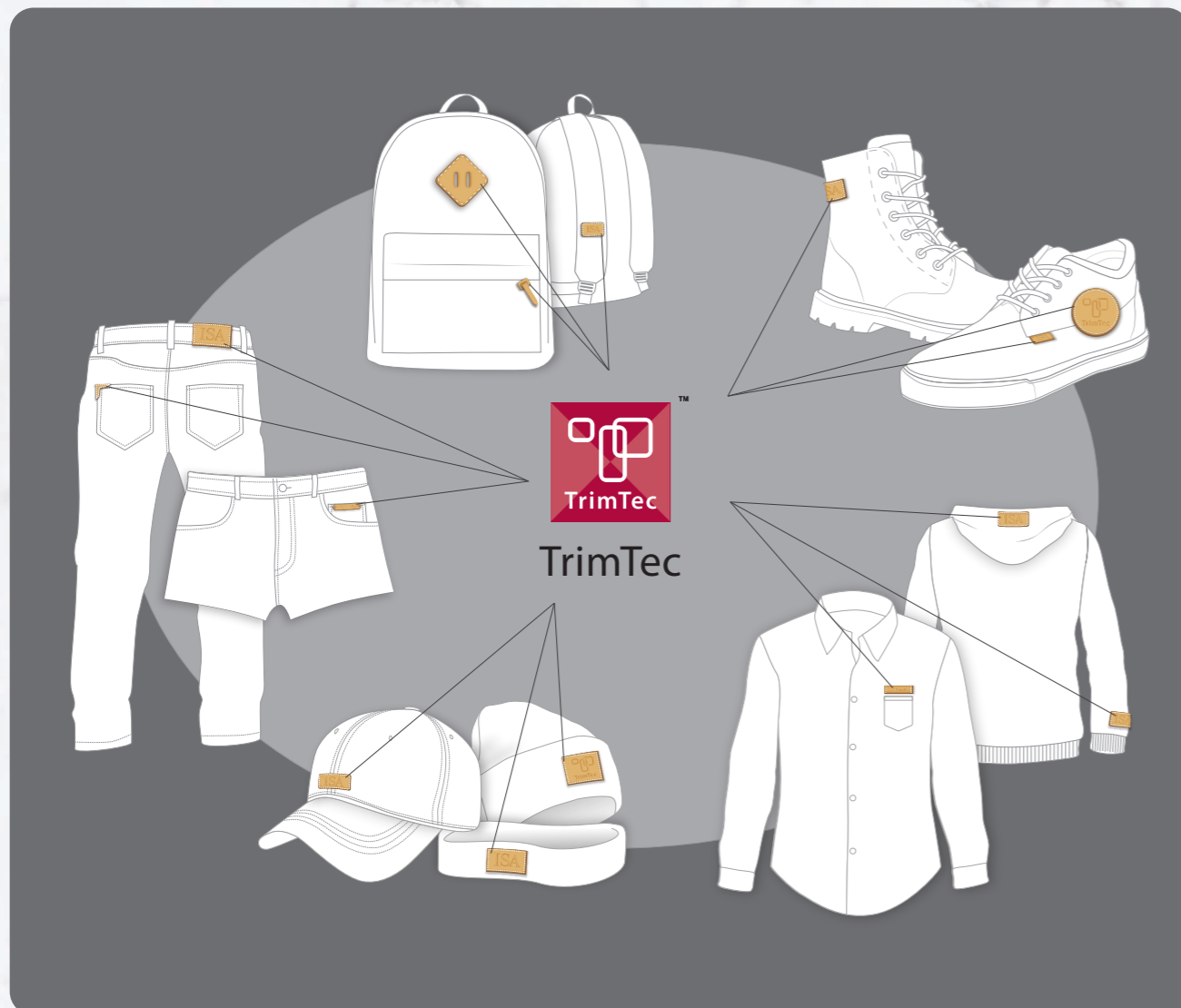
The Brand Behind The Brand

ISA INDUSTRIAL LTD. WWW.LITELEATHER.COM
MACAU (CHINA) | USA | VIETNAM | CHINA | ITALY | HONG KONG (CHINA)



*Spring Summer 2021
Collection*

Advantages of Partnering with TrimTec



- **LITE Concept**

ISA LITE index provide water and energy savings rates for every leather or label.

- **The Most Advanced RSL System**

ISA TanTec works with its partners in the chemical industry to eliminate or significantly reduce the chemicals we believe are potentially problematic in the future from the supply chain, without sacrificing the performance of our leather. This system along with the Restricted Substance List, applies to ALL of its products, for ALL of its customers, at ALL times.

- **Traceability to The Meat Processing Facility**

All leathers used in label production can be traced to the meat processing facility. ISA TanTec only purchases raw material from LWG Gold rated tanneries.

- **An Active Member of Sustainable Apparel Coalition (SAC)**

An active member of SAC to share and extend a sustainable future for our brands.

- **Quality and Consistency / Consistency within All Production Locations**

Stable material supply base from LWG Gold rated tanneries, 100% internal finish label inspection, and control over the entire supply chain.

- **Global Manufacturing Footprint (Local Delivery Door to Door)**

4 production locations include the USA, Vietnam, China and Italy covering all main global production areas.

- **Vertically Integrated Production**

Producing labels full cycle from wet blue to the finished label ensuring a high rate of label and leather availability.

- **Global Brand Base**

Clients are famous brands worldwide.

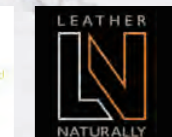
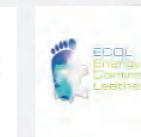
- **Multi-Level Selling**

ISA TanTec works with all types of companies include international brands, trading companies and direct garment manufacturers.

About ISA TrimTec

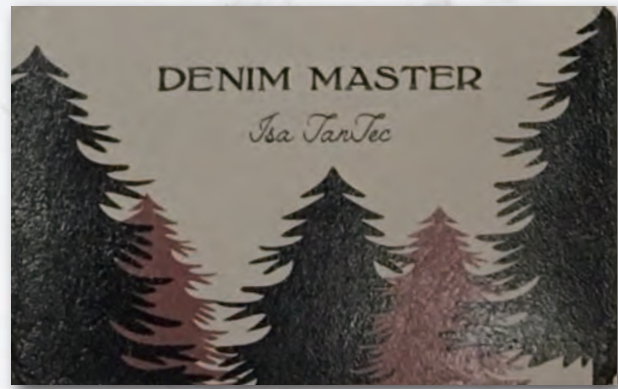
Under one tannery roof, ISA TanTec also operates a leather trimming division, ISA TrimTec, which specializes in trims for apparel, bags and shoes. ISA TrimTec offers customized technology options including debossing, embossing, foiling and printing as well as special finishing. ISA TrimTec strives for value by adding to the supply chain in terms of manufacturing diversity, cost efficiencies, fast delivery and risk free RSL performance.

Certificates

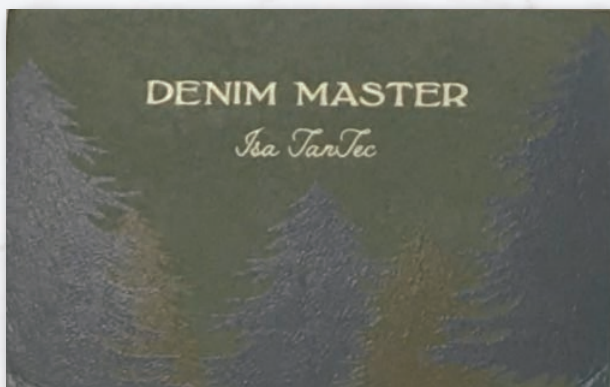
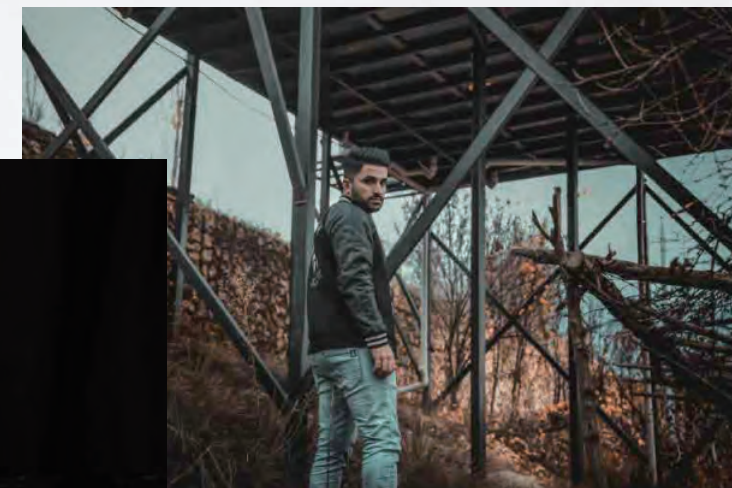
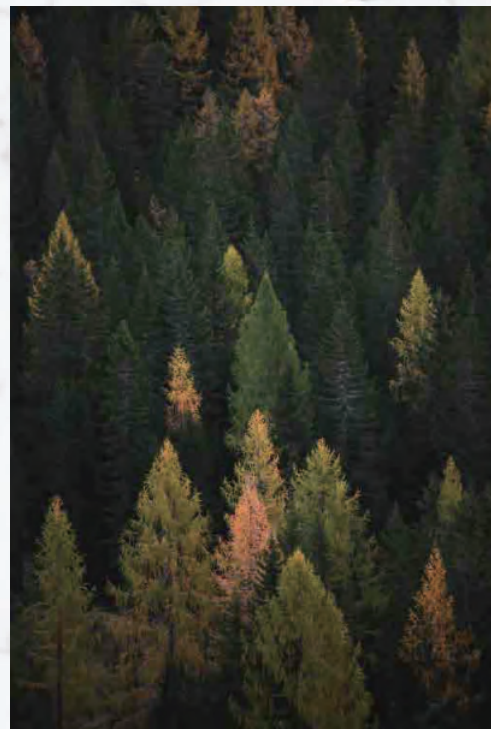


Seasonal Colors

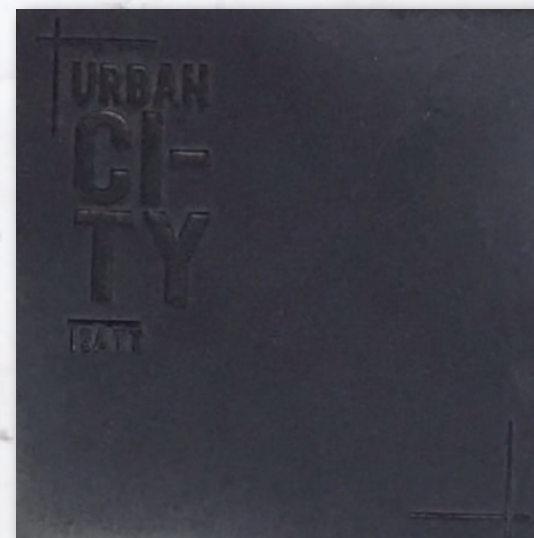




R23093



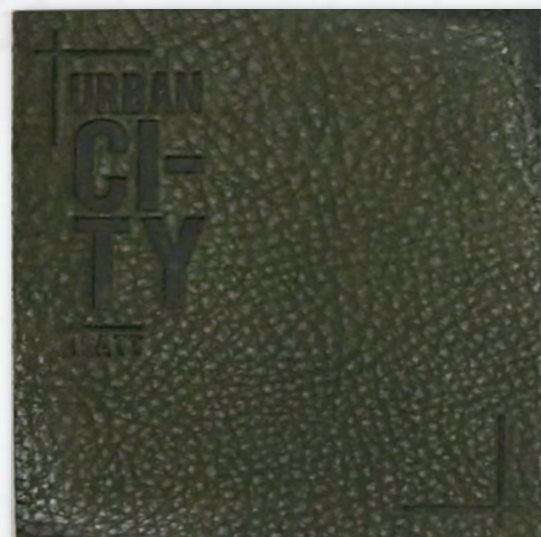
R23092



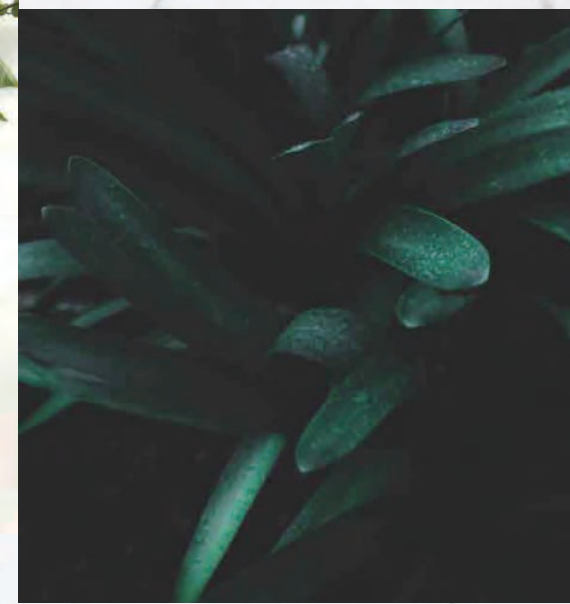
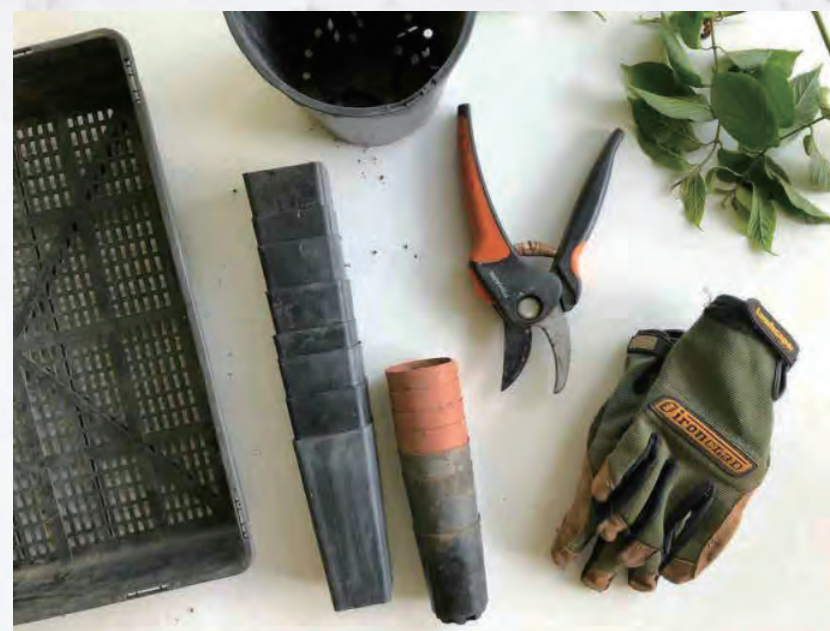
R23088



R23091



R23090





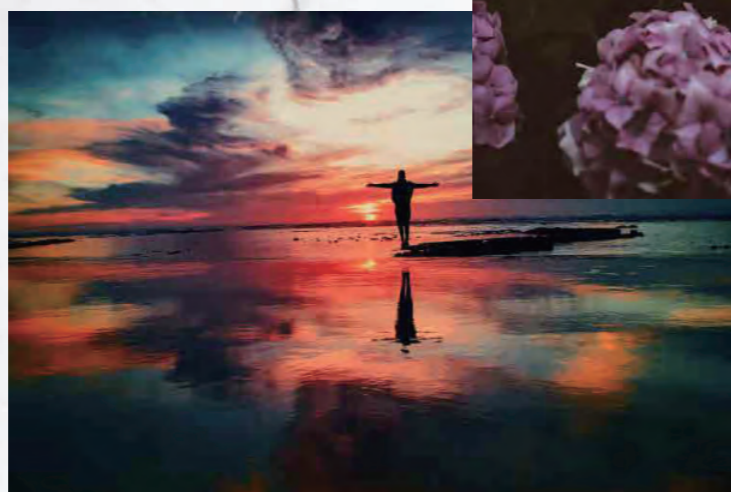
R23079



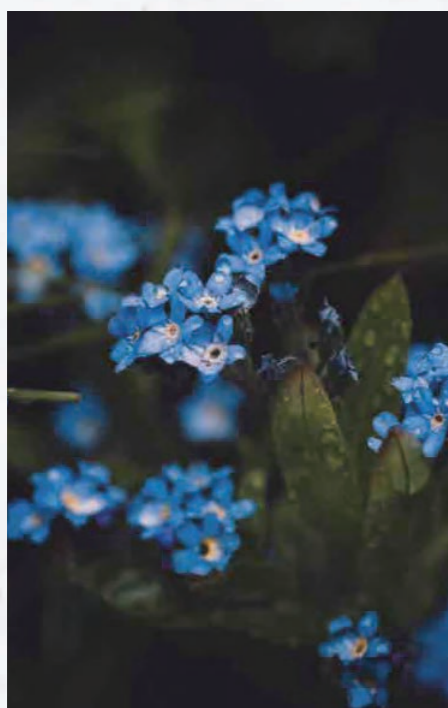
R23087



R23085



R23084



R23383



R23385



R23086



R23083





R23070



R23066



R23065



R23062



R23072



R23073



R23071



R23064



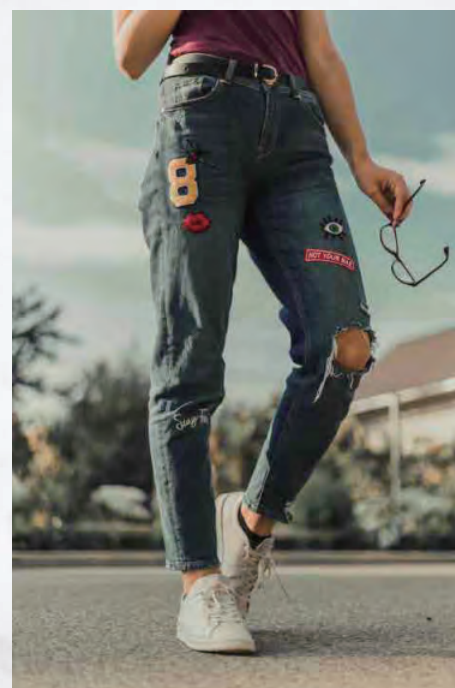
R23063



R23076



R23077

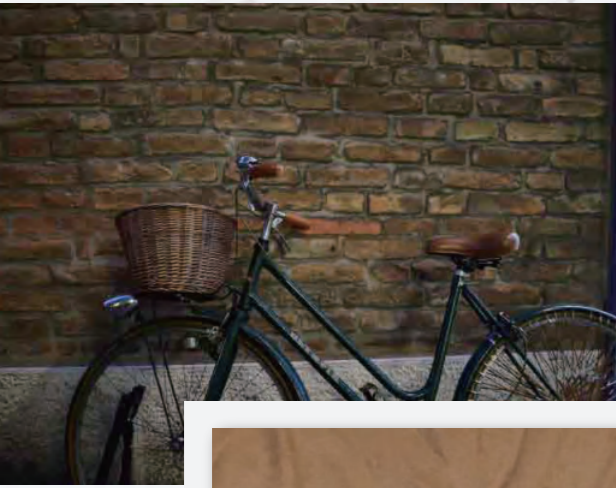


R23074



R23075

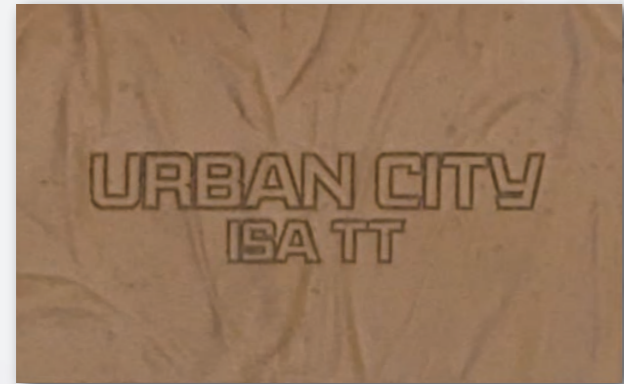
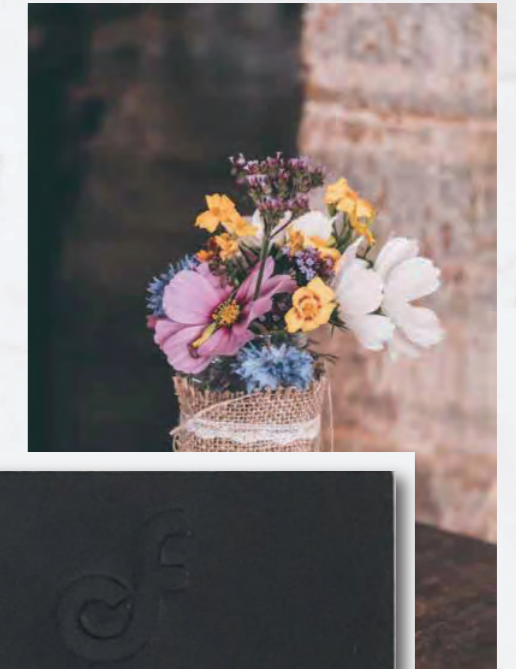




- Chrome Free material
- Best match to Veg tanned leather but better performance on color fastness & shrinkage
- More color options possible
- Processed under LWG awarded tanneries & OEKO-TEX certified label facilities
- Designed and monitored with LITE branded technology



FreEvolution



R23129



R23132



R23134



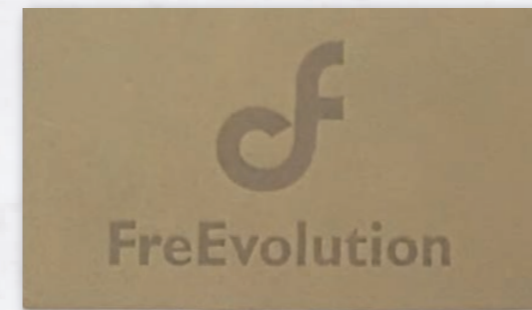
R23135



R23128



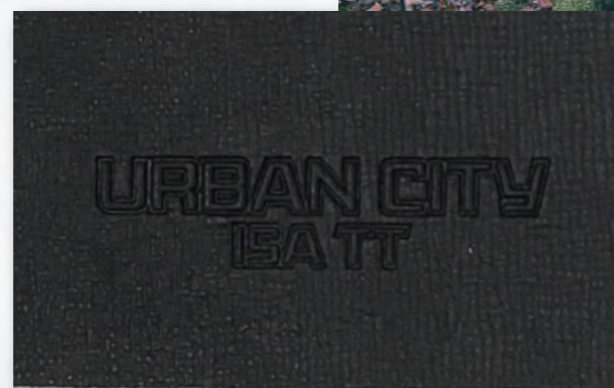
R23133



R23136



R23131



R23130



R23137





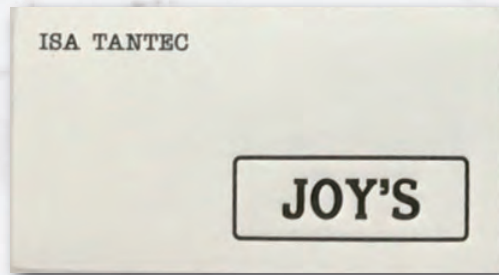
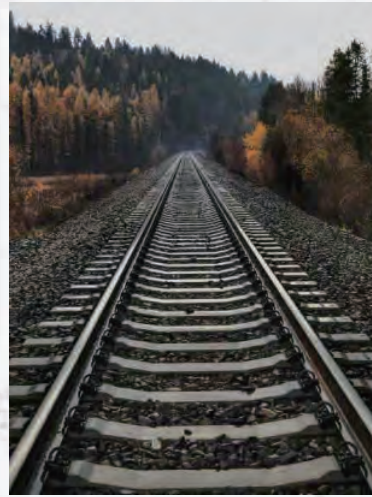
R23123



R23120



R23118



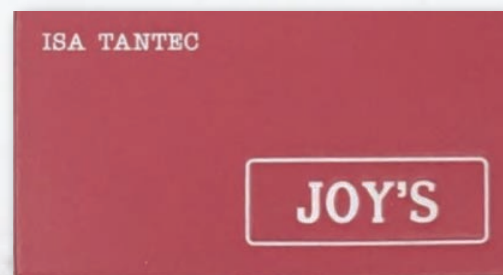
R23122



R23116



R23117



R23121



R23150



R23148



R23147



R23149



R23146



R23142



R23145



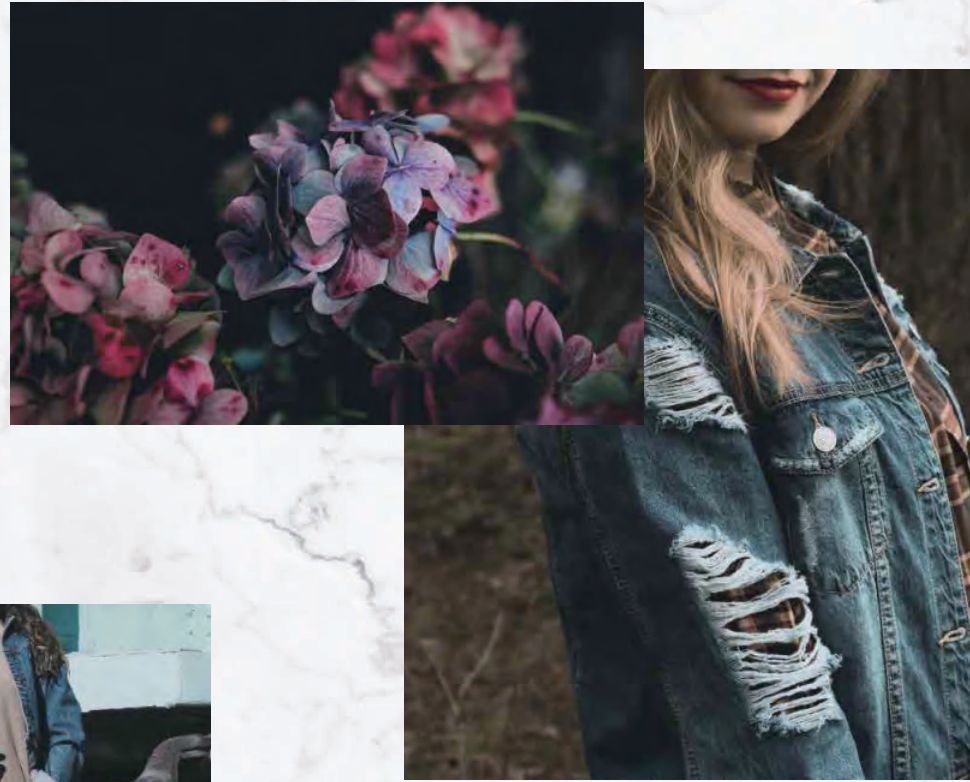
R23143



R23144



R23111



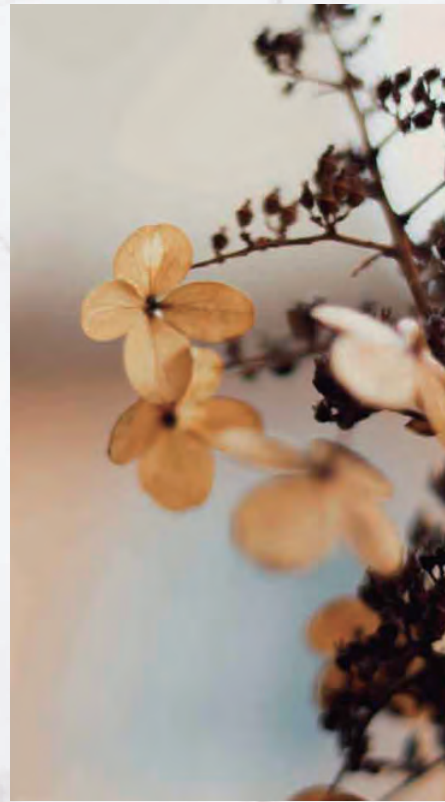
R23112



R23113



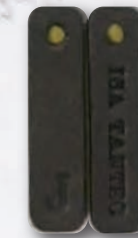
R23115



R23114



R23124

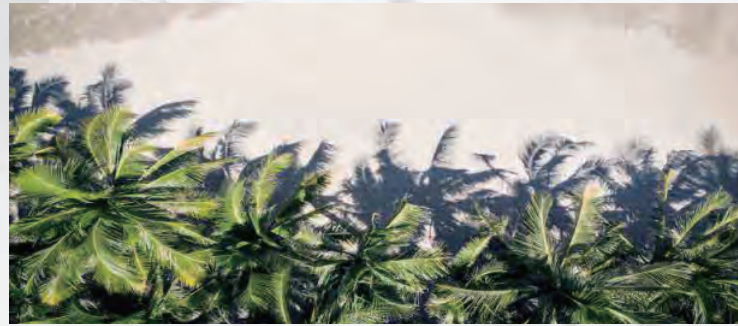
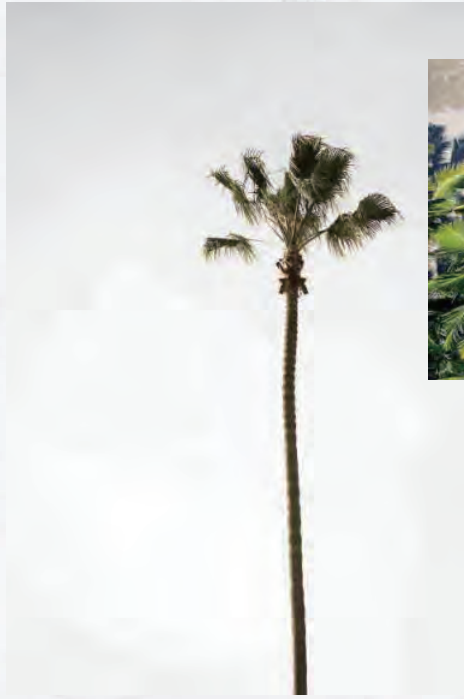


R23126

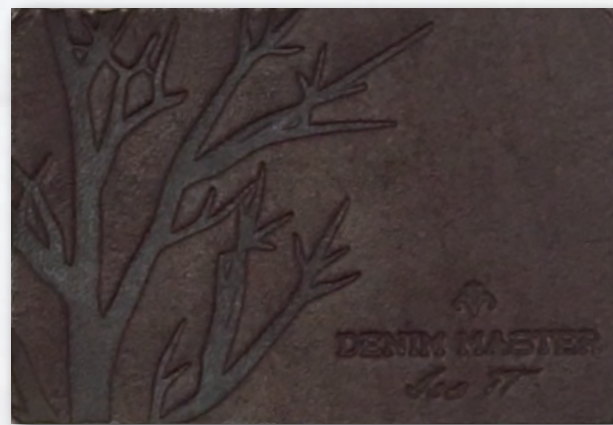


R23127





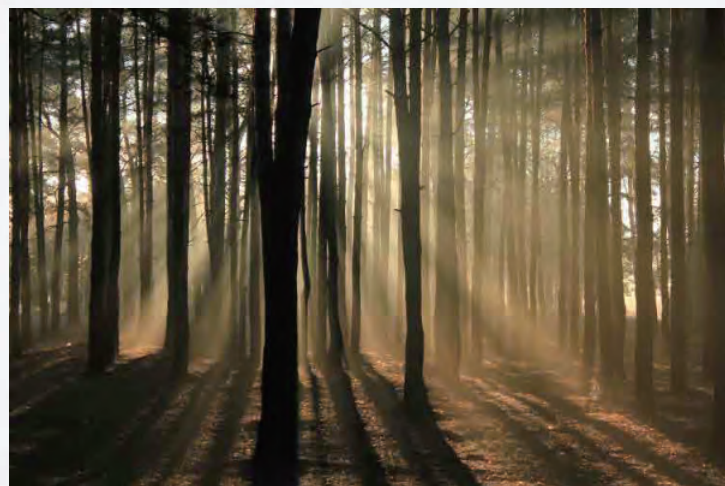
R23102



R23103



R23119



R23094



R23095



R23108



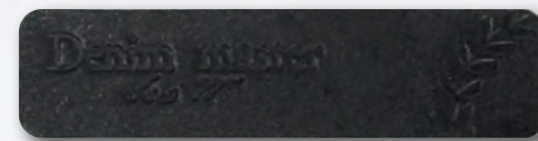
R23109



R23110



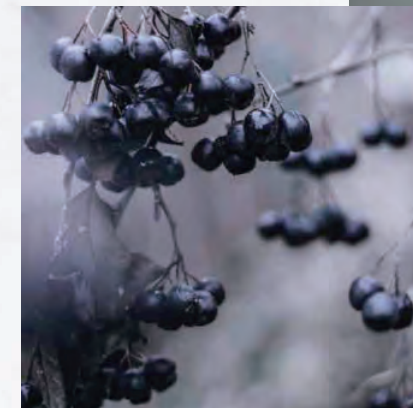
R23104



R23106

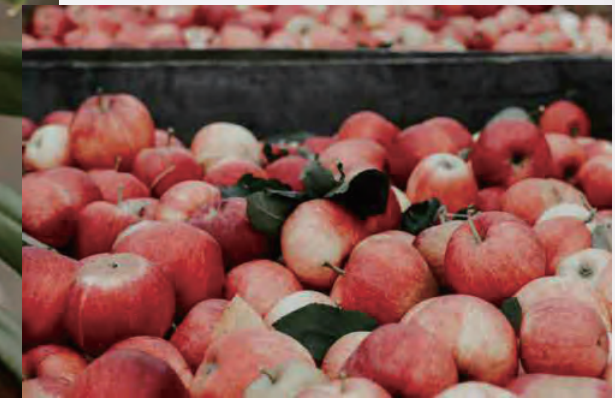


R23107





R23151



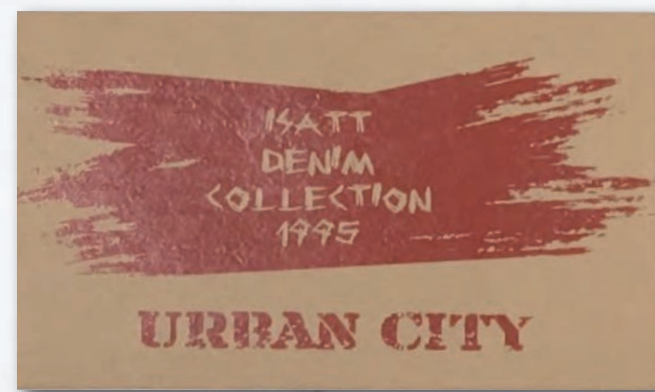
R23067



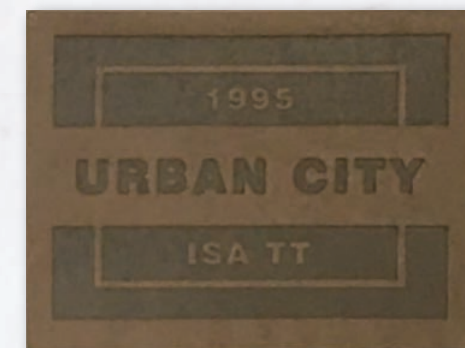
R23153



R23069



R23152



R23068

