



The Brand  Behind The Brand

Mississippi TanTec Leather, Inc.

101 TanTec Way,
Vicksburg, MS 39183, USA
Tel: +1 601 429 6081
Fax: +1 601 429 6082

Saigon TanTec Leather Ltd.

Lot M2-M3, Viet Huong 2 Industrial Park,
An Tay Village, Ben Cat District,
Binh Duong Province, Vietnam
Tel: +84 274 357 9101/357 9102
Fax: +84 274 357 9103

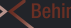
Heshan TanTec Leather Co., Ltd.

No.3 Industrial Zone,
Hecheng Town, Heshan City,
Guangdong Province, 529727, China
Tel: +86 750 831 3280/831 3294
Fax: +86 750 831 3288

Scamosceria del Brenta srl

Via Pre' 42 - C.P. n. 5,
36061 Bassano del Grappa (Vicenza), Italy
Tel: +39 (0) 424 568124 r.a.
Fax: +39 (0) 424 567093

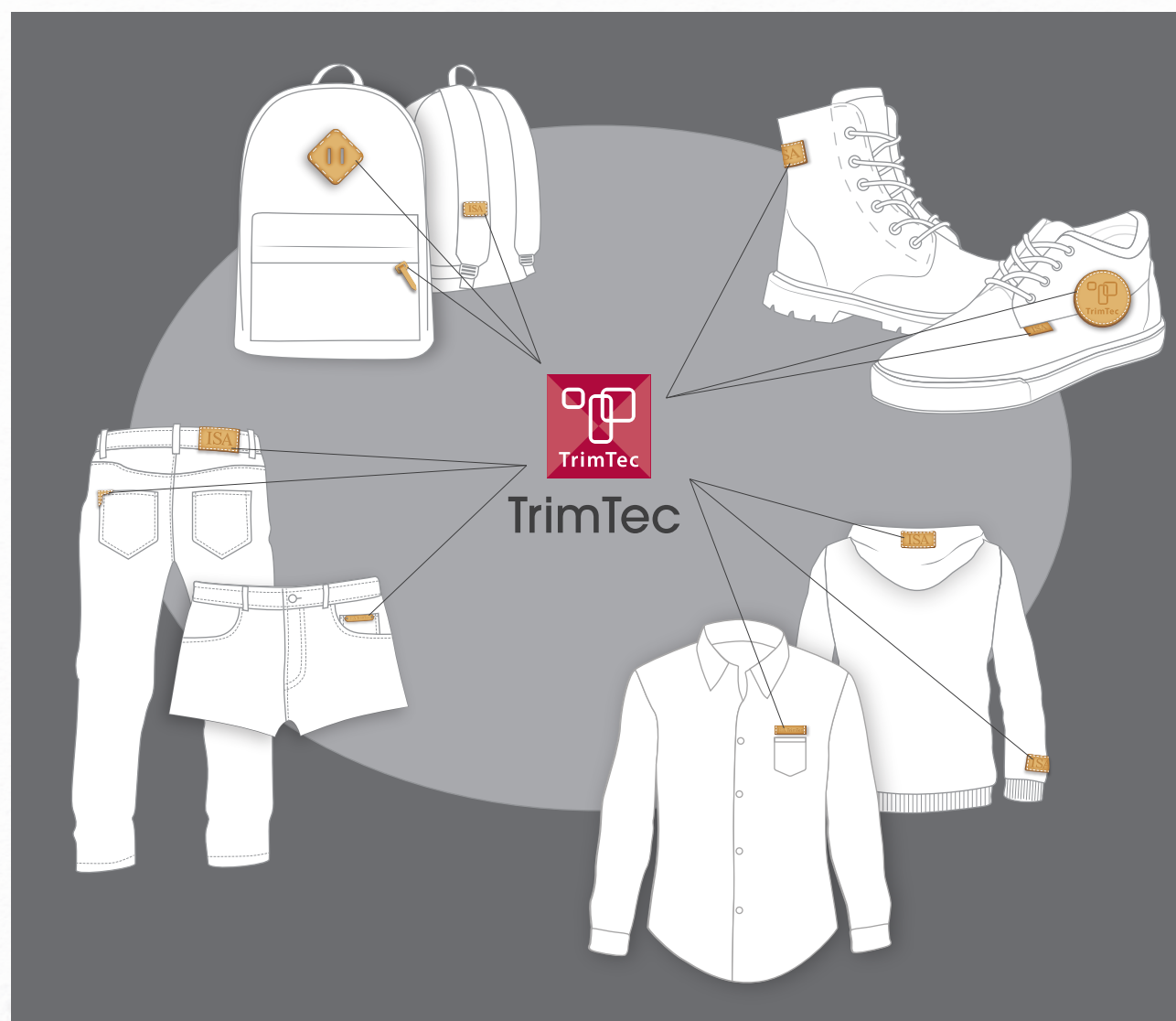


The Brand  Behind The Brand

ISA INDUSTRIAL LTD. | MACAU | USA | VIETNAM | CHINA | ITALY | www.liteleather.com



**2019 FALL WINTER
COLLECTION**



Advantages of Partnering With TrimTec

- **LITE Concept**
ISA LITE index provide water and energy savings rates for every leather or label.
- **The Most Advanced RSL System**
ISA TanTec works with its partners in the chemical industry to eliminate or significantly reduce the chemicals we believe are potentially problematic in the future from the supply chain, without sacrificing the performance of our leather. This system along with the Restricted Substance List, applies to ALL of its products, for ALL of its customers, at ALL times.
- **“A” Rated Traceability to the Meat Processing Facility**
All leathers used in label production can be traced to the meat processing facility. ISA TanTec only purchases raw material from LWG Gold rated tanneries.
- **The Only Tannery Member of Sustainable Apparel Coalition (SAC)**
The first and only tannery to join SAC to share and extend sustainable futures for our brands.
- **Quality and Consistency / Consistency within All Production Locations**
Stable material supply base from LWG Gold rated tanneries, 100% internal finish label inspection, and control over the entire supply chain.
- **Global Manufacturing Footprint (Local Delivery Door to Door)**
4 production locations include the USA, Vietnam, China and Italy covering all main global production areas.
- **Vertically Integrated Production**
Producing labels full cycle from wet blue to the finished label ensuring a high rate of label and leather availability.
- **Global Brand Base**
Clients are famous brands worldwide.
- **Multi-Level Selling**
ISA TanTec works with all types of companies include international brands, trading companies and direct garment manufacturers.

About ISA TrimTec

Under one tannery roof, ISA TanTec also operates a leather trimming division, ISA TrimTec, which specializes in trims for apparel, bags and shoes. ISA TrimTec offers customized technology options including debossing, embossing, foiling and printing as well as special finishing. ISA TrimTec strives for value by adding to the supply chain in terms of manufacturing diversity, cost efficiencies, fast delivery and risk free RSL performance.

Certificates



Trends Inspirations



A season that highlights two worlds. Magic operates at the frontiers of these universes, where the centric and the eccentric combine to give rise to a daily life that is as crazy as it is well designed.

Firstly, a world focused on tangible values, sustainability, design with all its accuracy and its virtuosity of precision. Solid, grounded materials, colours rich with history.

Then another fantastical world, where exuberance brings a liberating breath of fresh air, showcasing unbridled imagination as a driver of creation.

This omnipresent duality is the principal reason multi-layered surfaces are a key point of the season.

Compact materials play with tension and relaxation, natural structures adopt curves, volumes are unbound and vigorous. A naturalness with a utilitarian air, where raw straps and ties are strongly presents on garments.

A rawness borrowed from nature highlights the massive power of primitive elements. Rough feels and porous texture where the cavities absorb colour like a sponge. Smooth full surfaces combine with them to produce partially polished rustic items. Components enhance this roughness and irregularity, with scraped surfaces, randomly stamped to give wild textures.

Precious oxidised items reveal changing colours and navigate between warm and cold tones. An impression of carbonised iridescence, blurred metallics, metal patinated with subtle wear.

Oxidised finishes are controlled with finesse and reveal the richness of their shades when placed carefully on the item. They are set like gemstones, surrounded by mirror-like metal.

Fringes, hair and feathers continue to adorn silhouettes. Subtly tamed, these warm items appear on surfaces, and are delicately cut to give results as surprising as they are spectacular. The mix of colours, unusual layerings and random positionings are designed to surprise.



Phantasmagorical decorations, decorations that come straight from a daydream. Mid-way between baroque romanticism and accumulations are taken to extremes, the trend is to add even more. Embroidery on fake fur, lace cut-outs that give a glimpse of a printed background.

The denim incorporated influences from the streetwear trend currently present at every level of the fashion industry, playing with dyes, colours, irregularities and graphics.

Construction techniques and finishes are aiming to transmit an elegant, fluid vision of denim. Products ranged from fabric featuring an origami effect to a selvedge denim, passing through products combining flexibility and weight, or warmth and delicacy, often through the use of wool.

It also looks like denim is trying to get itself back in on the party scene, with exhibitors showing fabrics featuring metallic finishes, sparkles and gold. These effects were achieved through a wide variety of techniques, from jacquard to the combination of an indigo warp with a sparkly polyester weft, to the application of foils.



White



Beige



Pumpkin Spice



Toffee



Limestone



Brown Patina



Potting Soil



Deep Mahogany



Silver



Gargoyle



French Vanilla



Faience



Ebony



Moonlit Ocean



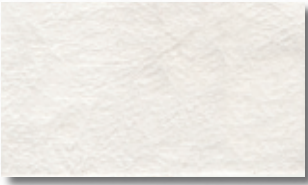
Black Olive



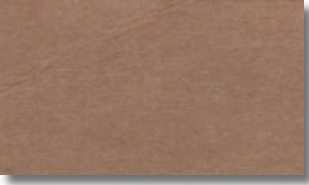
Tap Shoe



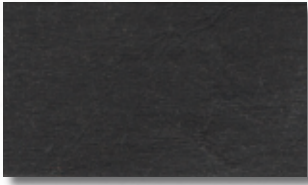
Vegan Colors



White

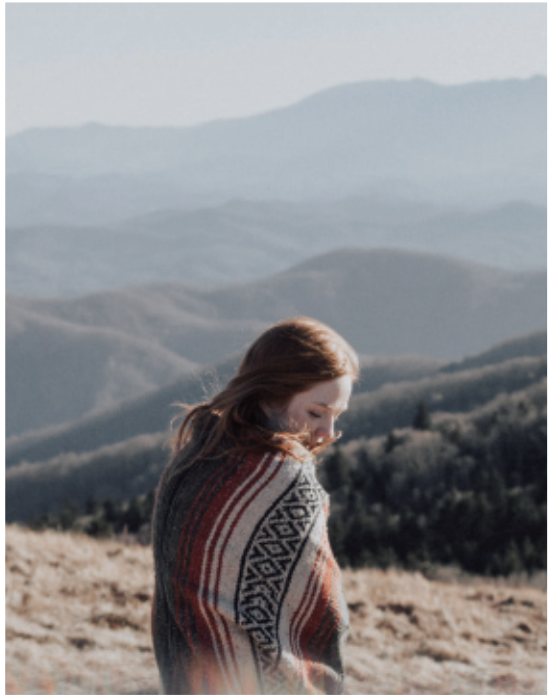


Sahara



Black

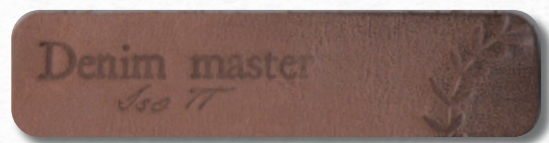
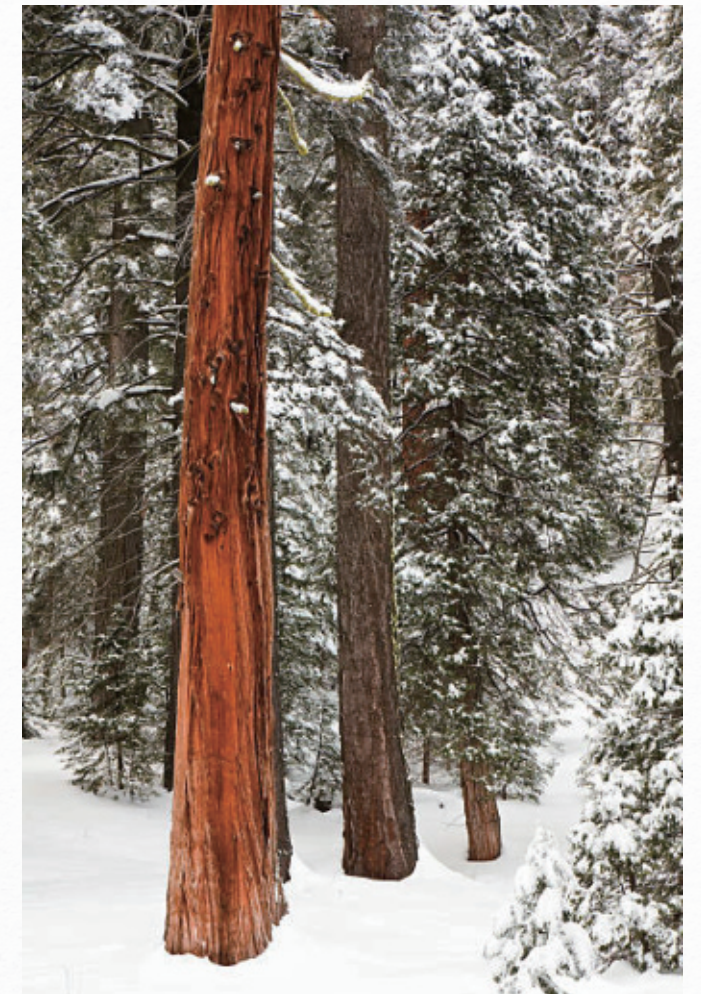




R16057



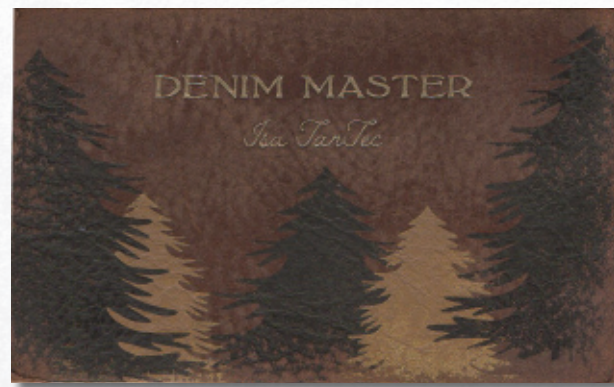
R16038



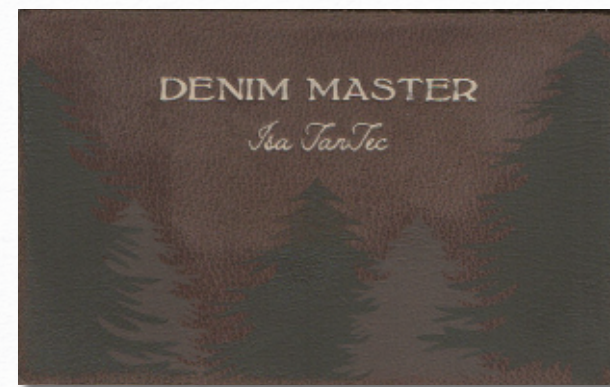
R16055



R16056



R16040



R16039

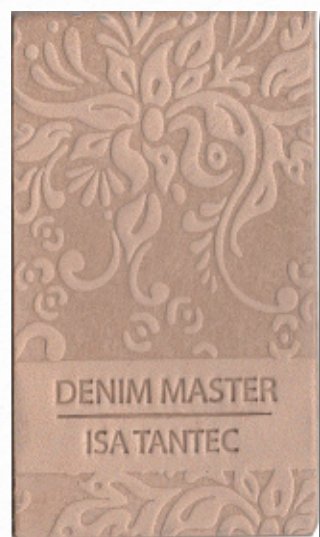
ISA TrimTec 2019 Fall Winter Collection



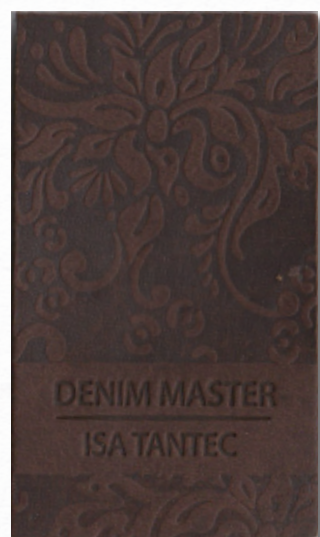
R16049



R16046



R16047



R16048



R16045



R16043



R16042



R16041

ISA TrimTec 2019 Fall Winter Collection



R16035



R16032



R16033



R16063



R16037



R16064



R16034



R16036



R16053



R16050



R16054



R16052



R16051



R15994



R16011



R15997



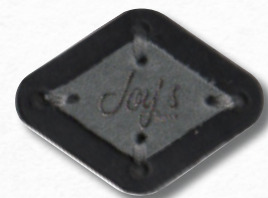
ISA TrimTec 2019 Fall Winter Collection



R16007



R16003



R16009



R16005



R16016



R16015



R16018



R16021



R16019

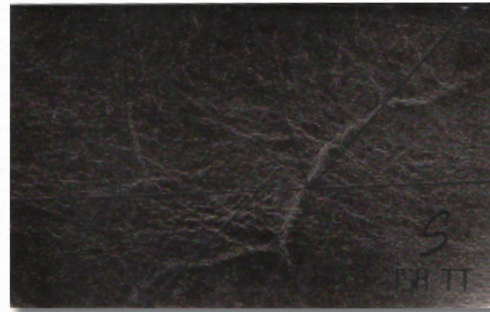
ISA TrimTec 2019 Fall Winter Collection



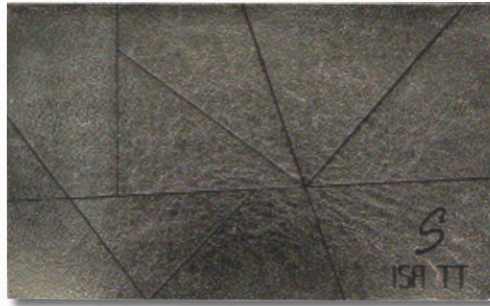
R16026



R16027



R16030



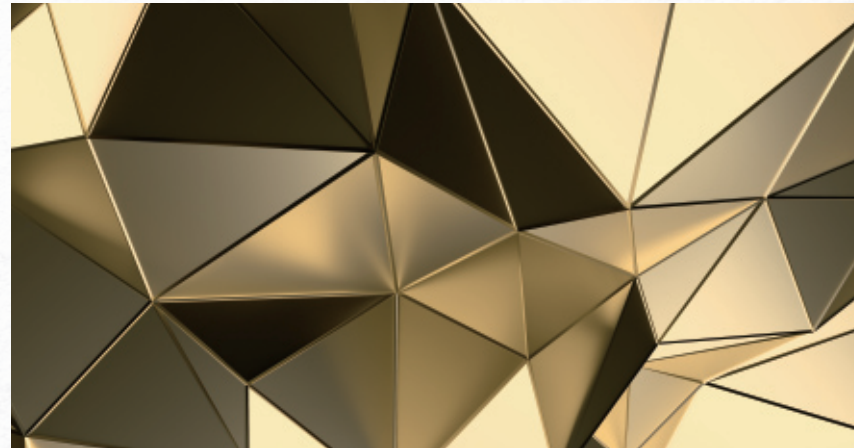
R16031



R16029



R16028



R16058



R16060



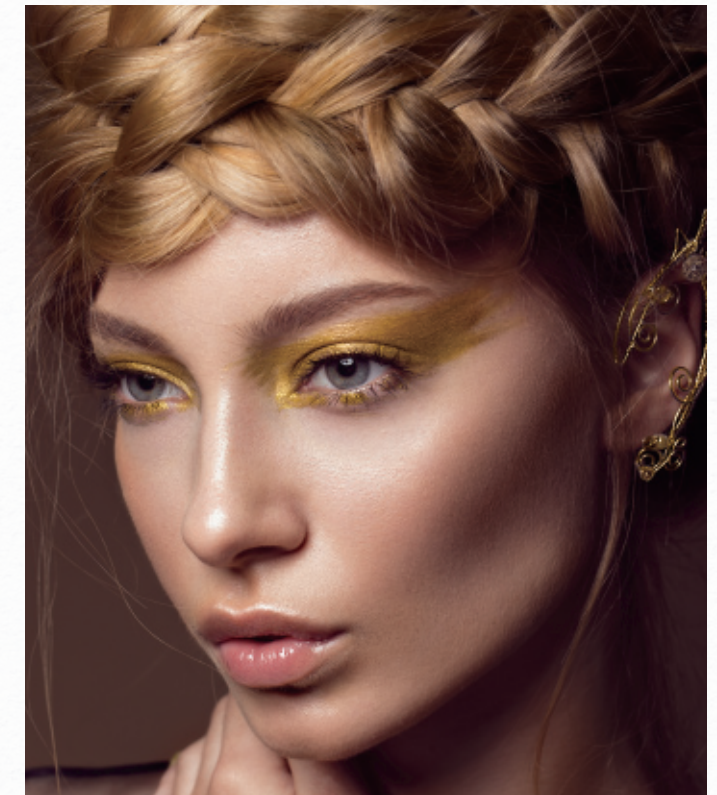
R16059

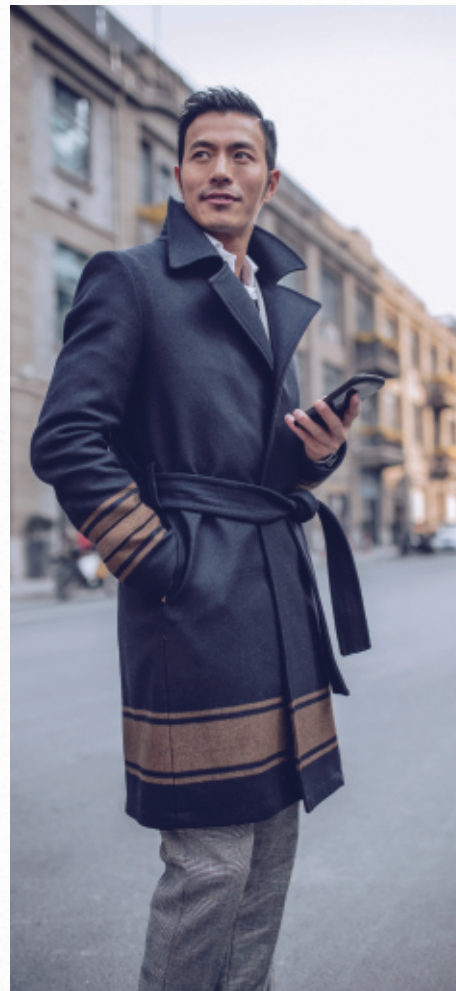


R16025



R16024





R16069



R16061



R16068



R16062



R16066



R16067

