

**Mississippi TanTec Leather, Inc.**

101 TanTec Way,  
Vicksburg, MS 39183, USA  
Tel: +1 601 429 6081  
Fax: +1 601 429 6082

**Saigon TanTec Leather Ltd.**

Lot M2-M3, Viet Huong 2 Industrial Park,  
An Tay Village, Ben Cat District,  
Binh Duong Province, Vietnam  
Tel: +84 274 357 9101/357 9102  
Fax: +84 274 357 9103

**Heshan TanTec Leather Co., Ltd.**

No. 1 Xingli Road,  
Hecheng Town, Heshan City,  
Guangdong Province, 529727, China  
Tel: +86 750 831 3280/831 3294  
Fax: +86 750 831 3288

**Scamosceria del Brenta srl**

Via Pre' 42 - C.P. n. 5,  
36061 Bassano del Grappa (Vicenza), Italy  
Tel: +39 (0) 424 568124 r.a.  
Fax: +39 (0) 424 567093



The Brand < Behind The Brand



2020 SPRING SUMMER  
COLLECTION



## Advantages of Partnering With TrimTec

- **LITE Concept**  
ISA LITE index provide water and energy savings rates for every leather or label.
- **The Most Advanced RSL System**  
ISA TanTec works with its partners in the chemical industry to eliminate or significantly reduce the chemicals we believe are potentially problematic in the future from the supply chain, without sacrificing the performance of our leather. This system along with the Restricted Substance List, applies to ALL of its products, for ALL of its customers, at ALL times.
- **“A” Rated Traceability to the Meat Processing Facility**  
All leathers used in label production can be traced to the meat processing facility. ISA TanTec only purchases raw material from LWG Gold rated tanneries.
- **The Only Tannery Member of Sustainable Apparel Coalition (SAC)**  
The first and only tannery to join SAC to share and extend sustainable futures for our brands.
- **Quality and Consistency / Consistency within All Production Locations**  
Stable material supply base from LWG Gold rated tanneries, 100% internal finish label inspection, and control over the entire supply chain.
- **Global Manufacturing Footprint (Local Delivery Door to Door)**  
4 production locations include the USA, Vietnam, China and Italy covering all main global production areas.
- **Vertically Integrated Production**  
Producing labels full cycle from wet blue to the finished label ensuring a high rate of label and leather availability.
- **Global Brand Base**  
Clients are famous brands worldwide.
- **Multi-Level Selling**  
ISA TanTec works with all types of companies include international brands, trading companies and direct garment manufacturers.

## About ISA TrimTec

Under one tannery roof, ISA TanTec also operates a leather trimming division, ISA TrimTec, which specializes in trims for apparel, bags and shoes. ISA TrimTec offers customized technology options including debossing, embossing, foiling and printing as well as special finishing. ISA TrimTec strives for value by adding to the supply chain in terms of manufacturing diversity, cost efficiencies, fast delivery and risk free RSL performance.

## Certificates



# TRENDS INSPIRATIONS



Overall, this is the season where we will search for ways to make a statement with over-dye denim in bold colors like lime green and purple, offbeat prints, metallic stripes and splashes of color. Transparent fabrics, excessive embroidery and heaps of embellishments (sequins, patches, buttons and charms) cohabitate, making this one of the season's most eclectic and youth-driven trends.

The trends also call for snow wash jeans, open-end denim, jeans with cinched-in waists and big belt. Other '80s accents include offbeat brights, archival seam details, diagonal designs, color blocking, structured shoulders and creased front jeans.

Logos and bold branding come into play with the trend's relaxed athleisure side. Tear-away pants, denim and jersey jackets, elasticized accents, jean shorts with sporty piping and varsity letters are key. The trend also hints to a revival of American prep like rugby and polo shirts.



Another of the trends movements calls for a mash-up of cultures with indigo prints inspired by Moroccan and Portuguese tile or laid back hippie tie-dye effect. The trend also wants feathers, fur and fur prints, aiming for a trendy American Indian inspired looks, but always with an edgy and modern vibe.

In some cases, bad taste is so bad that it's good, the slogan of the season should be "Fashion is an attitude". Among the more eccentric concepts, we will see raver-style jeans with wide legs and high waists, layered denim jackets and jeans with double waist bands.

Steel gray, white, black and icy indigos capture the futuristic idea people had about fashion for the new millennium. The Y2K base colors are popped with fuchsia, bright green, mint green, resin coatings and metallic finishes.

Lurex weaves, rhinestones, mirror-like metallics, organza overlays and iridescent sparkle add a youthful touch. Meanwhile, corset seaming, destroyed surfaces and skin-baring, lace-up constructions deliver a "trashed" look.

In this season, the awareness about the environment has reached its highest. Now that fashion is finally showing concern for the environment, the ecological alternatives are endless. A bevy of recycled fibers (from cotton and polyester to nylon) will be introduced during this season.

The spring / summer trends showcase concepts with roots in cultural movements, streetwear, the outdoor market and, most of all, nostalgia.

The goal of the season is to reinvent traditional weaves in modern ways.

There is a common feel of rebellion that asks for old, washed out denim looks. The washed jeans must have a gray or brown tint and many rips for a destruction look.

The new style also embrace hippy culture and eclecticism by creating a bohemian lifestyle through a streetwear lens; Effortless fabrics and carefree tie-dyes allow the wearer to be at ease in their own skin. The denim is oversized and layered with technical fabrics and silhouettes from the athleisure world. It's often embellished with practical zips and pockets, coatings and super-light-weight fabrics like nylon. It's worth to notice that the nylon brings more and more bright pop colors to the everyday wear.

# LEATHER COLORS



# VEGAN COLORS



The Brand < Behind The Brand



Chalk A



Warm Beige



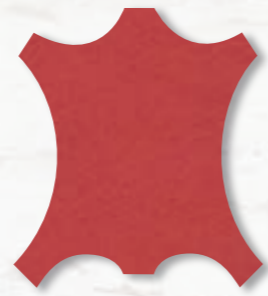
Wheat



Leather Brown



Brown



True Red



Silver Birch



Pearl Blue



Spearmint



Gold



Black



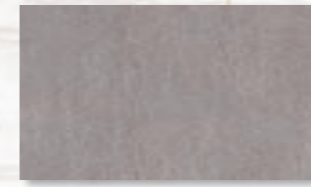
Vintage Grey (kx-07)



White



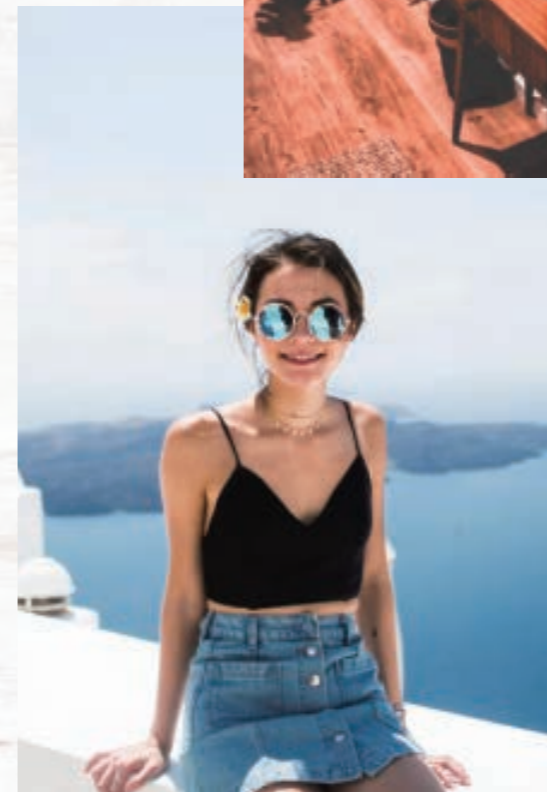
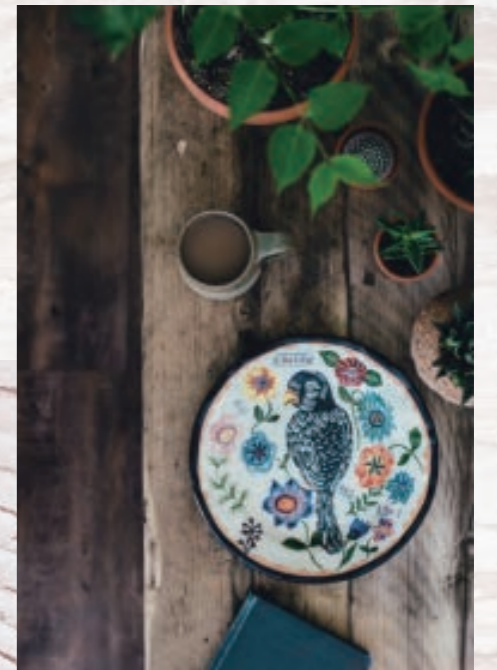
Sahara



Stone



Black



# ISA TRIMTEC 2020

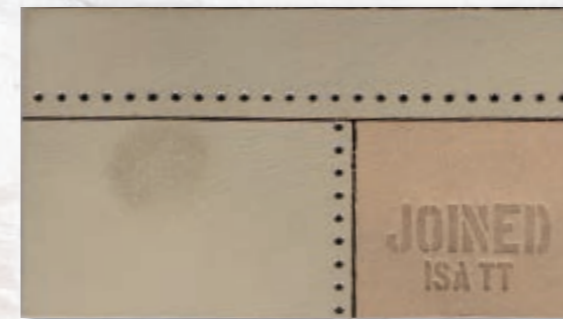
SPRING SUMMER COLLECTION



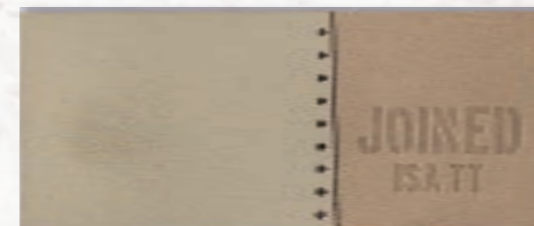
R17791



R17793



R17786



R17787



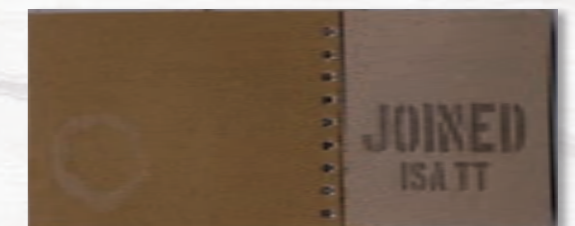
R17790



R17792



R17788



R17789



R17795



R17794



R17796

# ISA TRIMTEC 2020

SPRING SUMMER COLLECTION



R17801



R17799



R17800



R17802



R17804



R17805



R17798



R17797



R17803

# ISA TRIMTEC 2020

SPRING SUMMER COLLECTION



R17808



R17809



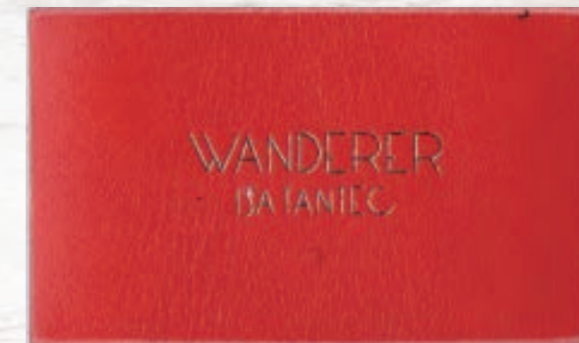
R17813



R17811



R17812



R17810



R17806



R17807



R17816



R17817



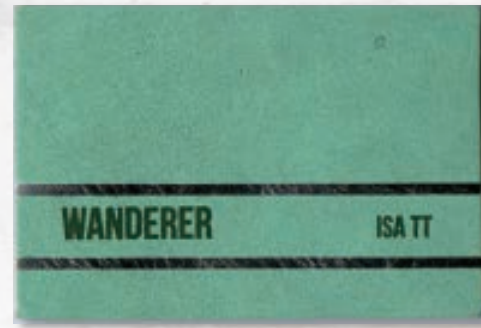
R17815



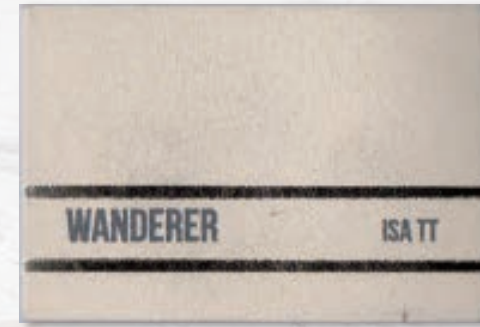
R17814

# ISA TRIMTEC 2020

SPRING SUMMER COLLECTION



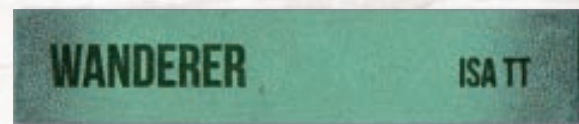
R17819



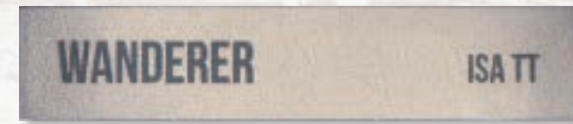
R17820



R17826



R17822



R17823



R17829



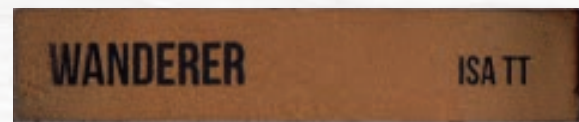
R17818



R17827



R17828



R17821



R17830



R17824



R17825





# ISA TRIMTEC 2020

SPRING SUMMER COLLECTION



R17832



R17831



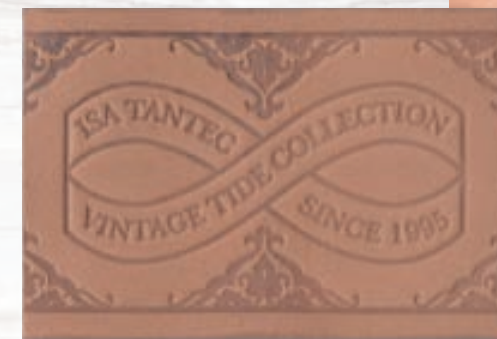
R17833



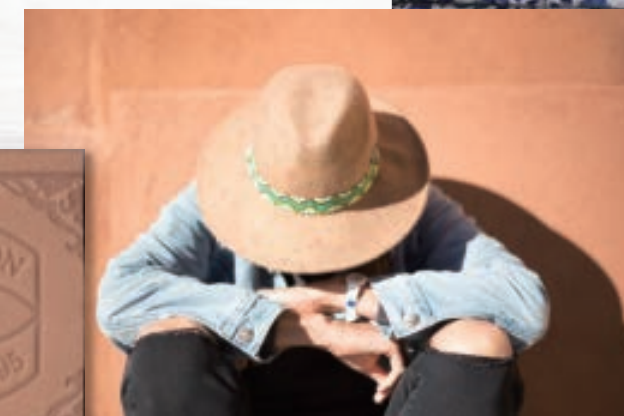
R17836



R17835



R17834



R17839



R17838



R17837

# ISA TRIMTEC 2020

SPRING SUMMER COLLECTION



R17843



R17846



R17845



R17844



R17842



R17841



R17840



R17847



R17849

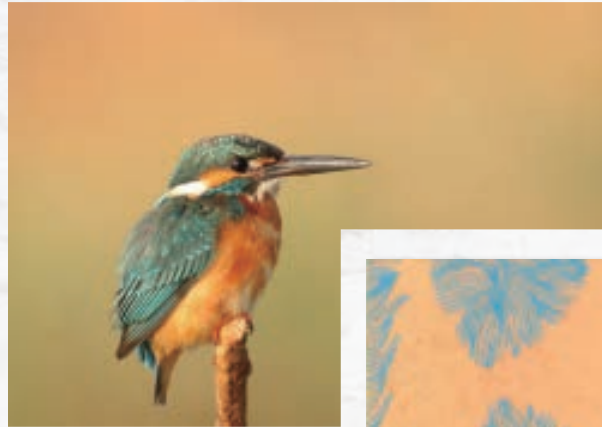


R17848



# ISA TRIMTEC 2020

SPRING SUMMER COLLECTION



R17852



R17853



R17850



R17859



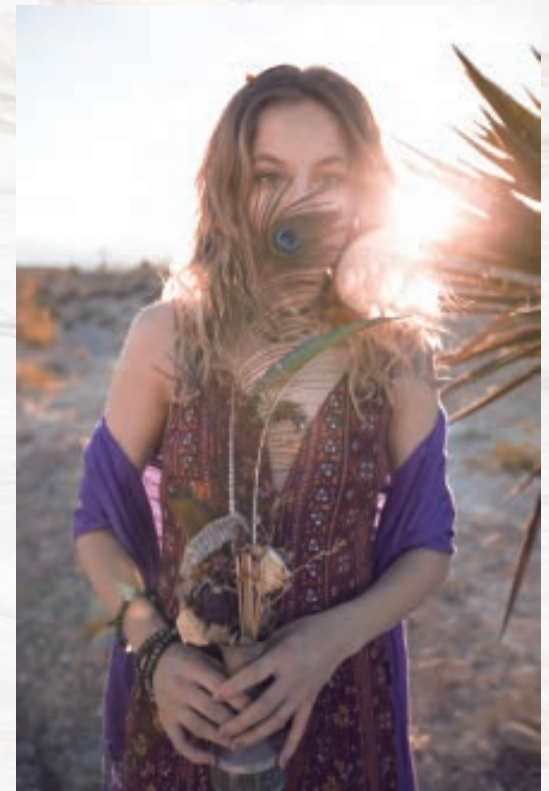
R17858



R17851



R17857



R17855



R17854



R17856

# ISA TRIMTEC 2020

SPRING SUMMER COLLECTION



R17864



R17866



R17865



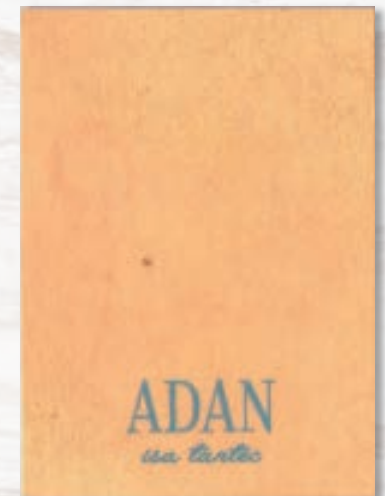
R17861



R17863



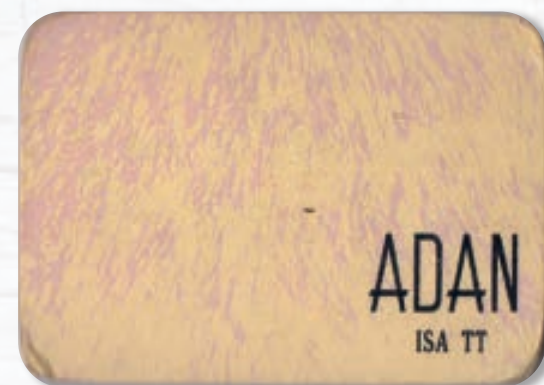
R17860



R17862



R17869



R17868



R17867



R17870